

# Your New Town Office

January 30, 2016

Barrington New Hampshire  
New Town Hall



# Space Needs:

- Office needs
- Storage needs
- Easy Access to Public
- Meeting room – 75 ppl

11,174 Gross Square Feet

Town of Barrington, NH

Municipal Facilities  
PROGRAM OF SPACES

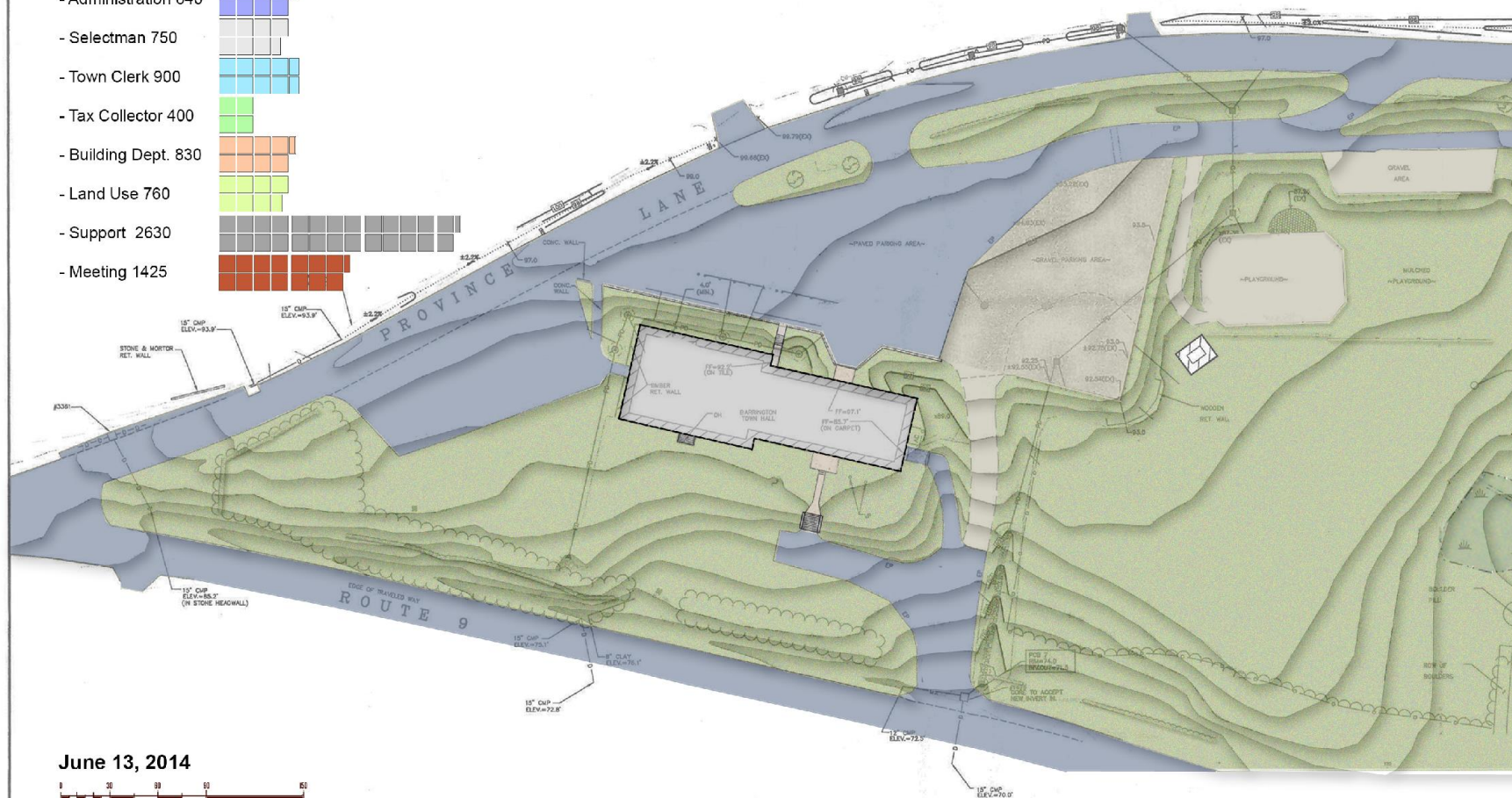
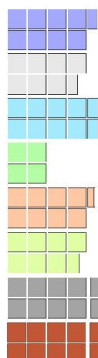
Facility	Space	Capacity	SF	Qty	Total SF	Near to	Notes
<b>Town Office</b>							
Town Administrator	14-8 ppl	270	1	270	Fin., Select		access to copier, coat closet
Finance Director	1	140	1	140			
Assistant Finance dir.	1	100	1	100			
Welfare dept.	144 ppl	200	1	200			File storage in office
Files/copy/storage area		130	1	130			6-8 cabinets
<b>Administration Subtotal</b>			<b>4</b>		<b>840</b>		
Selectman Secretary	1 work sta.	80	1	80			
Assessor/ Clerk	2 work sta.	160	1	160	meeting space		Map Layout area at Clerk
Receptionist	1 work sta.	80	1	80			
Rd. Agent/Sec.	1 work sta.	80	1	80			
Files/copy/storage area		130	1	130			
Public counter/waiting		120	1	120			
Map viewing Area		100	1	100			
<b>Selectman Subtotal</b>			<b>5</b>		<b>750</b>		
Town Clerk Office	142 ppl	150	1	150			
Clerk's Counter	3 ppl	90	3	270	lobby		9 cabinets, acoustic concern
Priv. Meeting	3-4 ppl	15	4	60	clerk + lobby		confidential/ share with Tax Coll.
Public counter/ Lobby		150	1	150	clerk		
Vault/storage		150	1	150	clerk		
Archive		120	1	120			in storage
<b>Clerk Subtotal</b>			<b>3</b>		<b>900</b>		
Tax Collector	2 ppl, 1 office	320	1	320			
Files/copy/storage area		60	1	60			
Public counter/ Lobby		80	1	80			2 separate Service windows
<b>Tax Subtotal</b>			<b>2</b>		<b>460</b>		
Building Inspectors	2 ppl	120	2	240	files		
Building dept. Staff	1 work sta.	80	1	80			
Files/copy/storage area		150	1	150			
Public counter/waiting		100	1	100			
Work + Meeting area	8 ppl	160	1	160			Shared with Planning dept.
Plan review Area		100	1	100			
<b>Building dept. Subtotal</b>			<b>3</b>		<b>830</b>		
Land Use Administrator	142 ppl	150	1	150			
Land Use Staff	1 work sta.	80	1	80			
Intern/Conserv.	1 work sta.	80	1	80			
Public counter/waiting		100	1	100			
Plan Review Table		120	1	120			
Files/copy/storage area		150	1	150			
Flat Files		80	1	80			
<b>Land Use Subtotal</b>			<b>3</b>		<b>760</b>		
IT Contractor	1 work sta.	80	1	80			
Facilities Mgr.	142 ppl	100	1	100			
Break/ Coffee/ Lunch Room		200	1	200			recycling area
Mail Room		100	1	100			
Secure storage room		1000	1	1000			incl. fireproof storage cabinets
General office storage		200	1	200			
Large Meeting room	75 ppl	15	75	1125			2/3-1/3 divider - Full A/V, video etc.
conference room	20 ppl	15	20	300			
restrooms		150	3	450			
Mech./ Elec./Data/ Video		500	1	500			
<b>Meeting and "Other" Subtotal</b>			<b>2</b>		<b>4055</b>		
<b>Net Area</b>					<b>8395</b>		
<b>Circulation</b>					<b>1719</b>		20% of net
<b>Walls /voids</b>					<b>859.5</b>		10% of net
<b>Gross SF</b>			<b>22 staff</b>		<b>11174 SF</b>		

Prepared by SMP Architecture

Barrington New Hampshire  
New Town Hall



- Administration 840
- Selectman 750
- Town Clerk 900
- Tax Collector 400
- Building Dept. 830
- Land Use 760
- Support 2630
- Meeting 1425



**June 13, 2014**



## GRADING & DRAINAGE IMPROVEMENT PLAN

[illegible]

DATE: JUNE 11, 2010  
SCALE: AS SHOWN  
DESIGNED BY: GY/BLM  
DRAWN BY: GY  
APPROVED BY: GY  
PROJECT NO: 2456  
2456-SITE DWG

**DRAINAGE IMPROVEMENTS  
TOWN HALL**  
Province Lane  
Barrington, NH

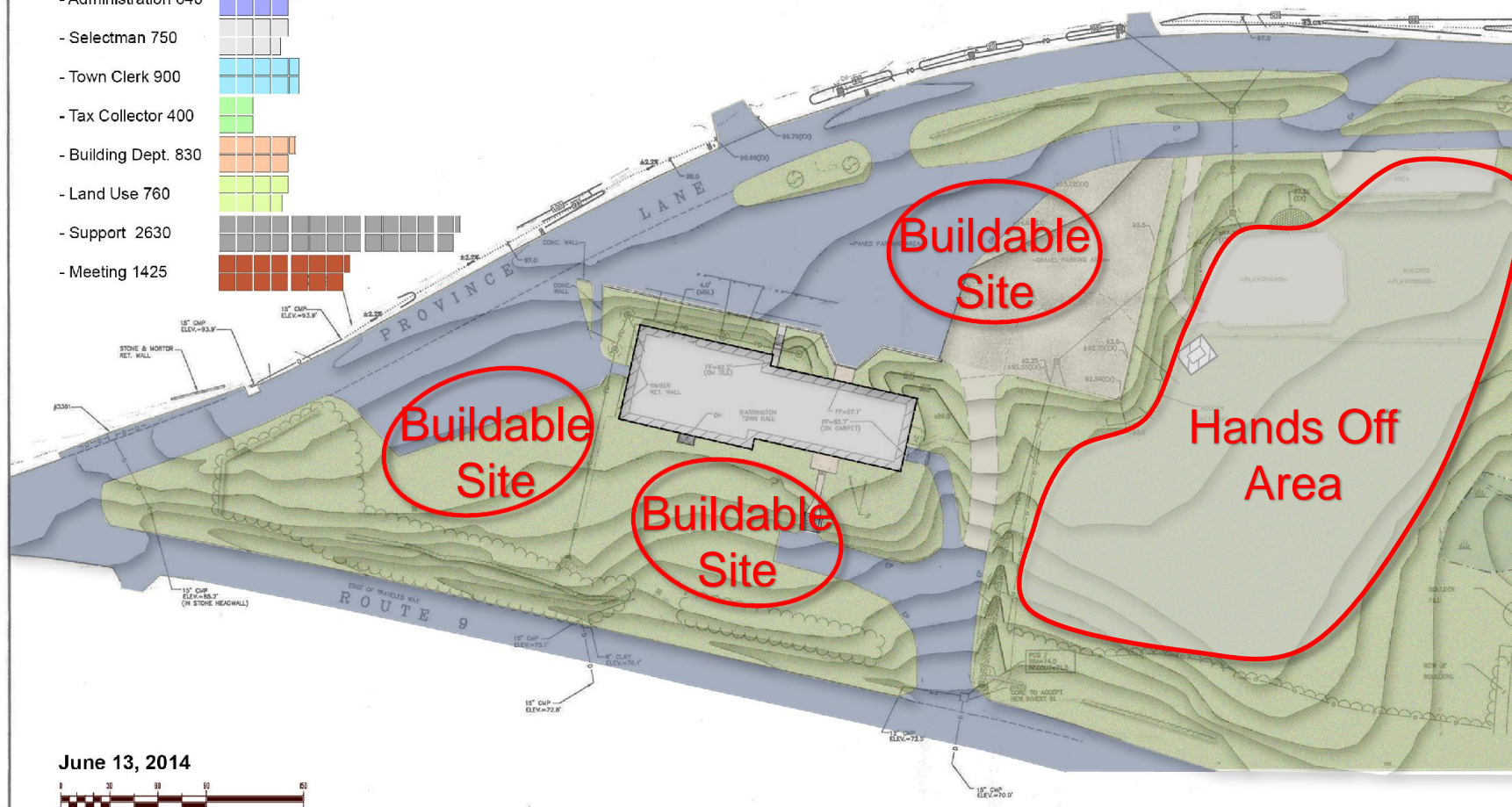
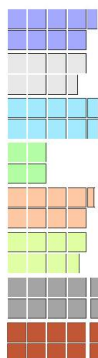
**APPLIEDORE**  
ENGINEERING

77 CORPORATE DRIVE  
PORTSMOUTH, NEW HAMPSHIRE 03801  
603/433-8818  
info@appliedore.com

1 OF



- Administration 840
- Selectman 750
- Town Clerk 900
- Tax Collector 400
- Building Dept. 830
- Land Use 760
- Support 2630
- Meeting 1425



**June 13, 2014**

## GRADING & DRAINAGE IMPROVEMENT PLAN

[illegible]

DATE: JUNE 11, 2010  
SCALE: AS SHOWN  
DESIGNED BY: GY/BLM  
DRAWN BY: GY  
APPROVED BY: GY  
PROJECT NO: 2456

**DRAINAGE IMPROVEMENTS  
TOWN HALL**  
*Province Lane  
Barrington, NH*

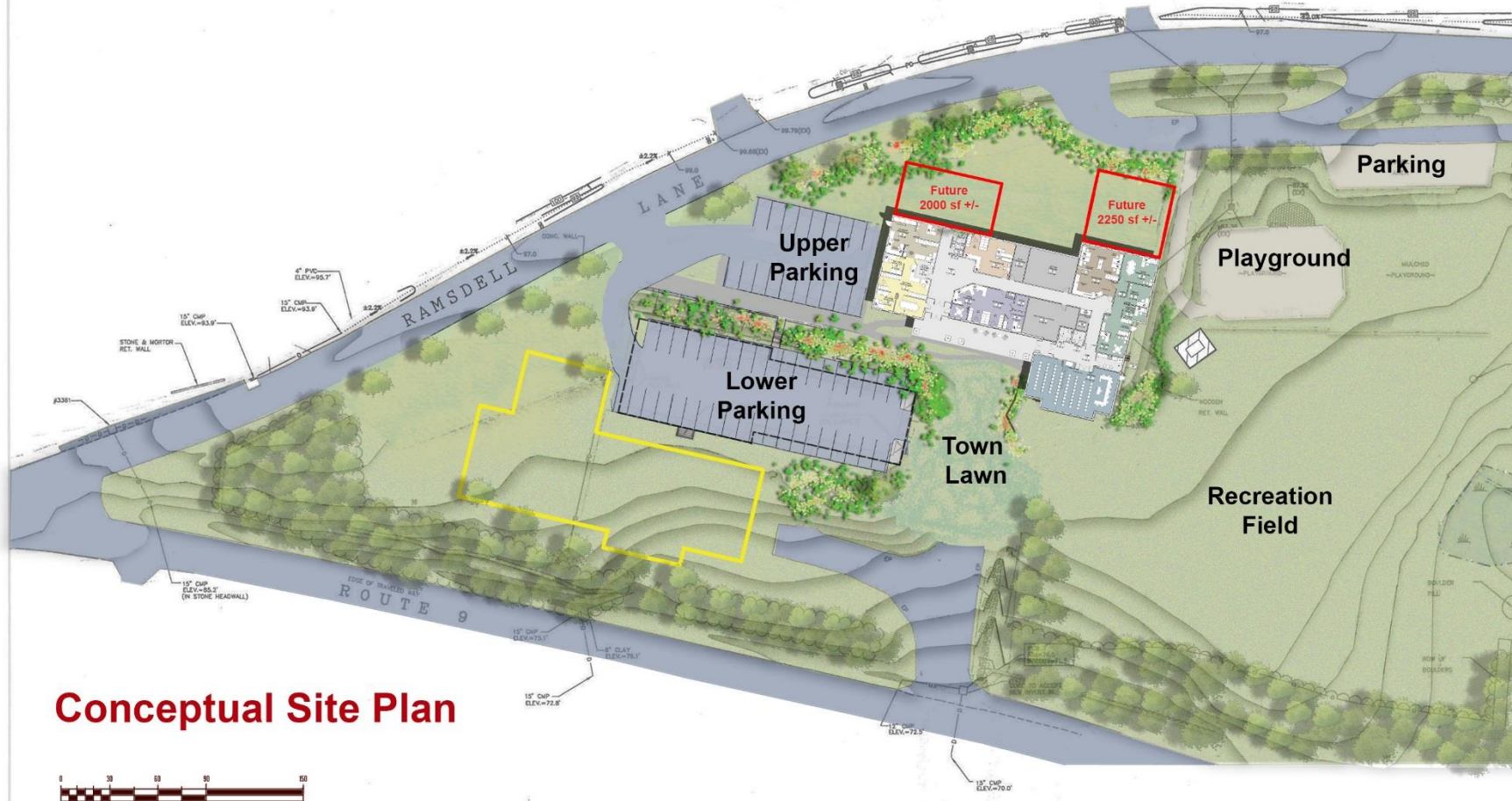
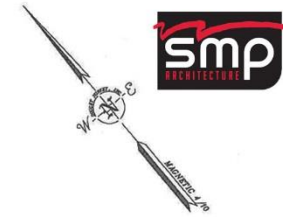
**APPLIEDORE**  
ENGINEERING

177 CORPORATE DRIVE  
PORTSMOUTH, NEW HAMPSHIRE 03801  
(603) 432-8818  
info@appliedore.com

1 OF 2

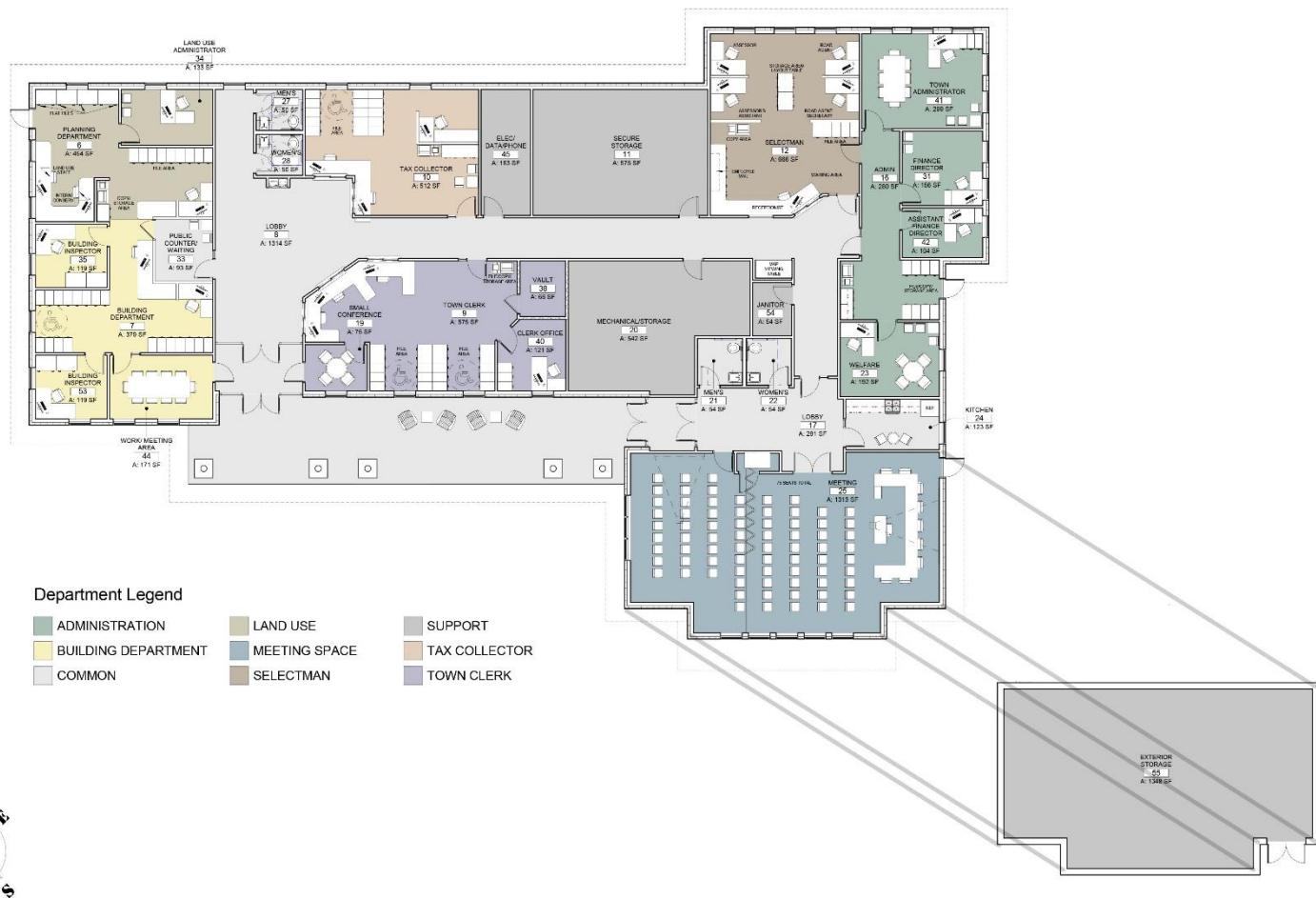


**January 22, 2015**



**DRAINAGE IMPROVEMENTS**  
TOWN HALL  
Province Lane  
Barrington, NH

1 OF 2



## BARRINGTON TOWN HALL

Barrington, New Hampshire 03825

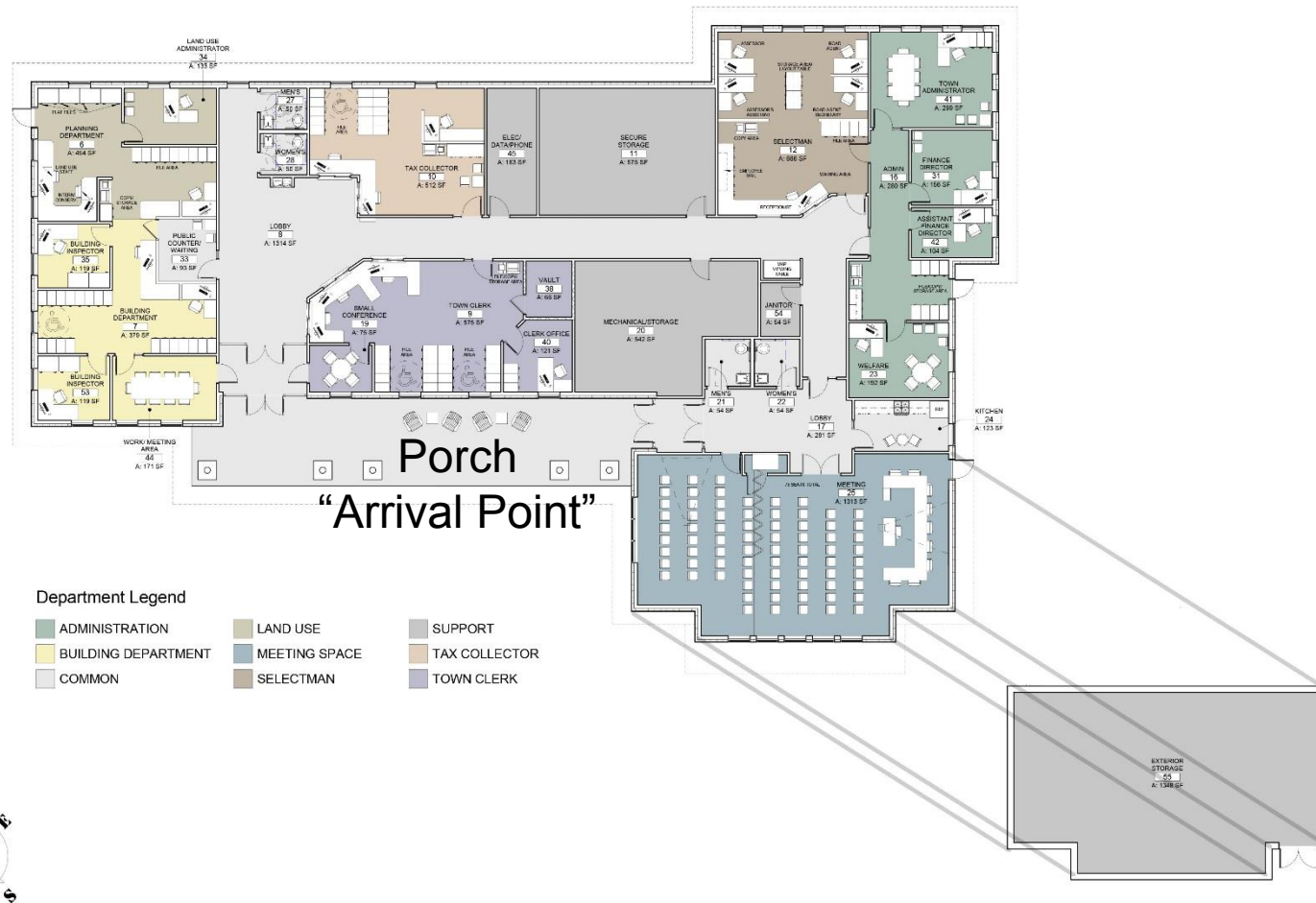
SEPTEMBER 8, 2014



THE CARRIAGE HOUSE  
30 S. MAIN ST., BUILDING TWO  
CONCORD, NH 03301  
603.228.8880

Barrington New Hampshire  
New Town Hall





## BARRINGTON TOWN HALL

Barrington, New Hampshire 03825

SEPTEMBER 8, 2014



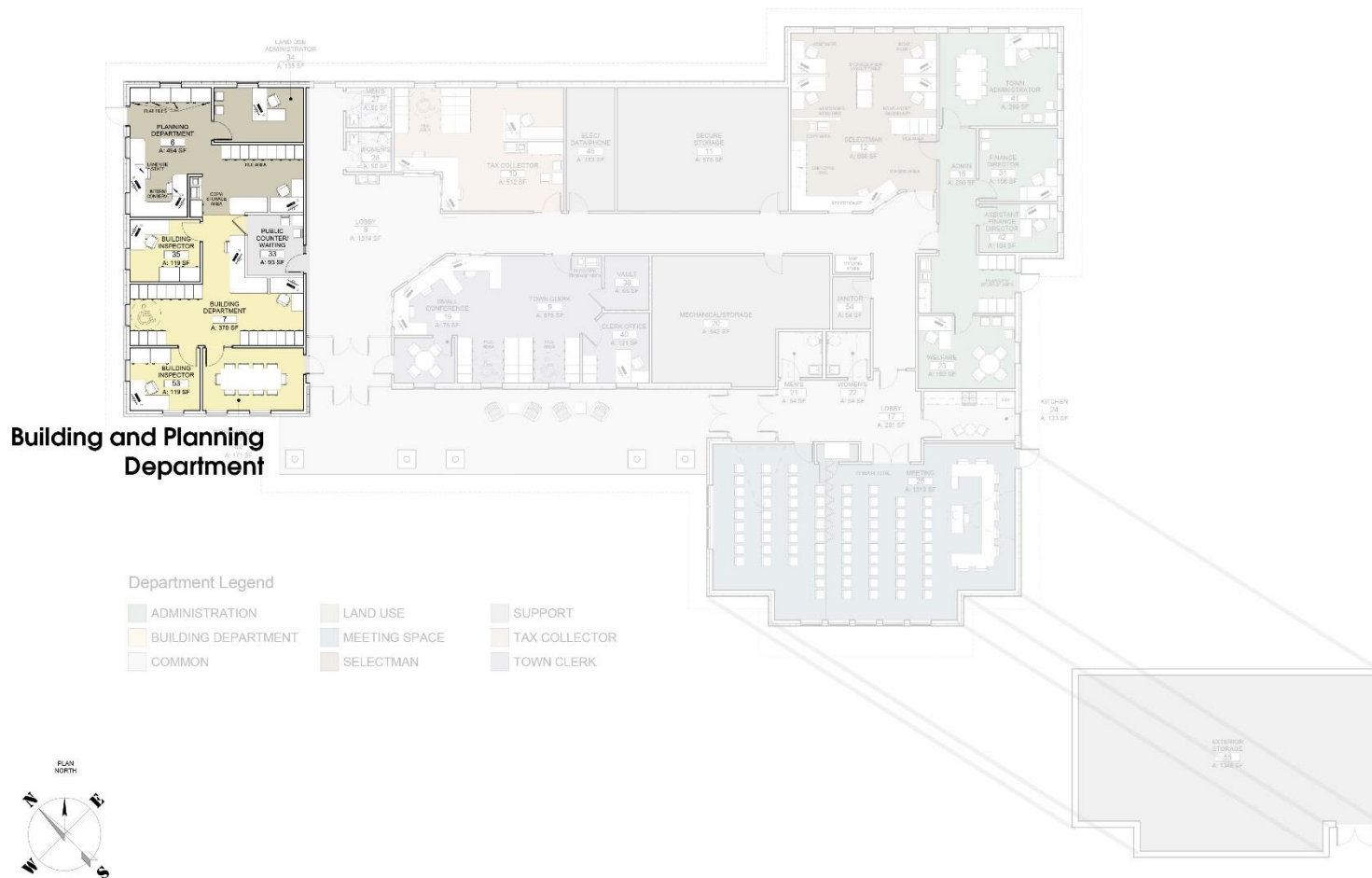
THE CARRIAGE HOUSE  
30 S. MAIN ST., BUILDING TWO  
CONCORD, NH 03301  
603.228.8880

Barrington New Hampshire  
New Town Hall









## BARRINGTON TOWN HALL

Barrington, New Hampshire 03825

SEPTEMBER 8, 2014



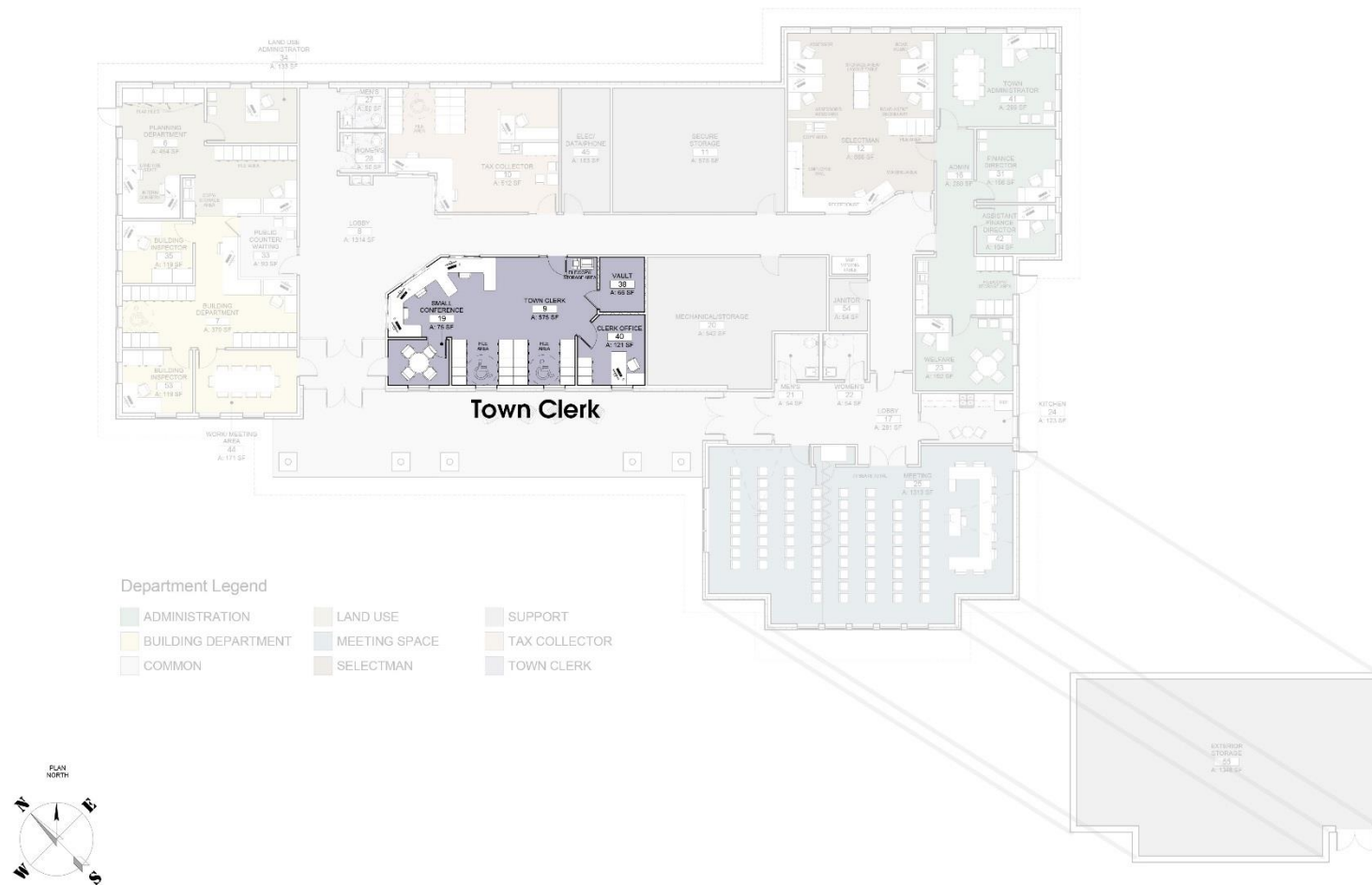
THE CARRIAGE HOUSE  
30 S. MAIN ST., BUILDING TWO  
CONCORD, NH 03301  
603.228.8880

Barrington New Hampshire  
New Town Hall









## BARRINGTON TOWN HALL

Barrington, New Hampshire 03825

SEPTEMBER 8, 2014

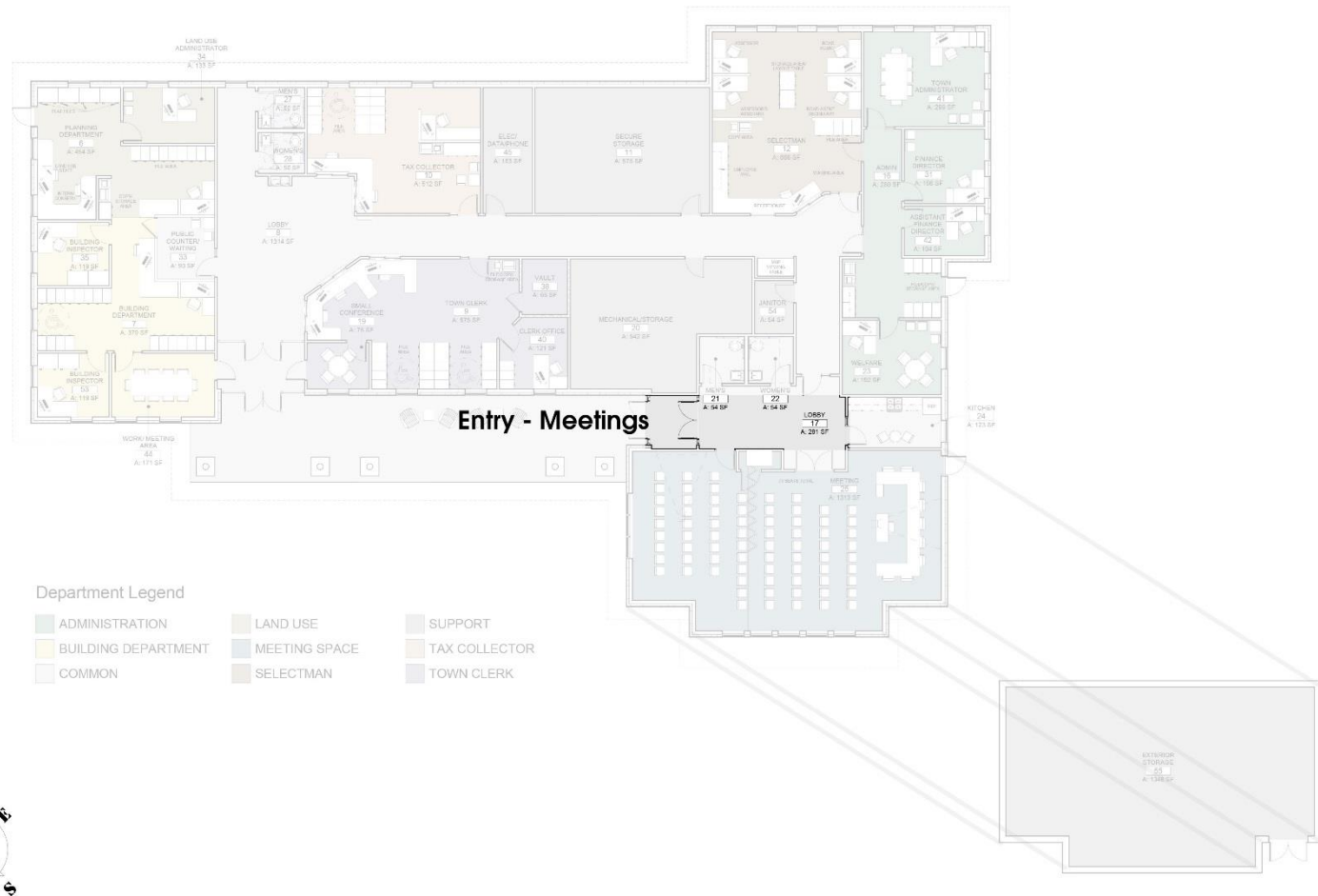


THE CARRIAGE HOUSE  
30 S. MAIN ST., BUILDING TWO  
CONCORD, NH 03301  
603.228.8880

Barrington New Hampshire  
New Town Hall







## BARRINGTON TOWN HALL

Barrington, New Hampshire 03825

SEPTEMBER 8, 2014



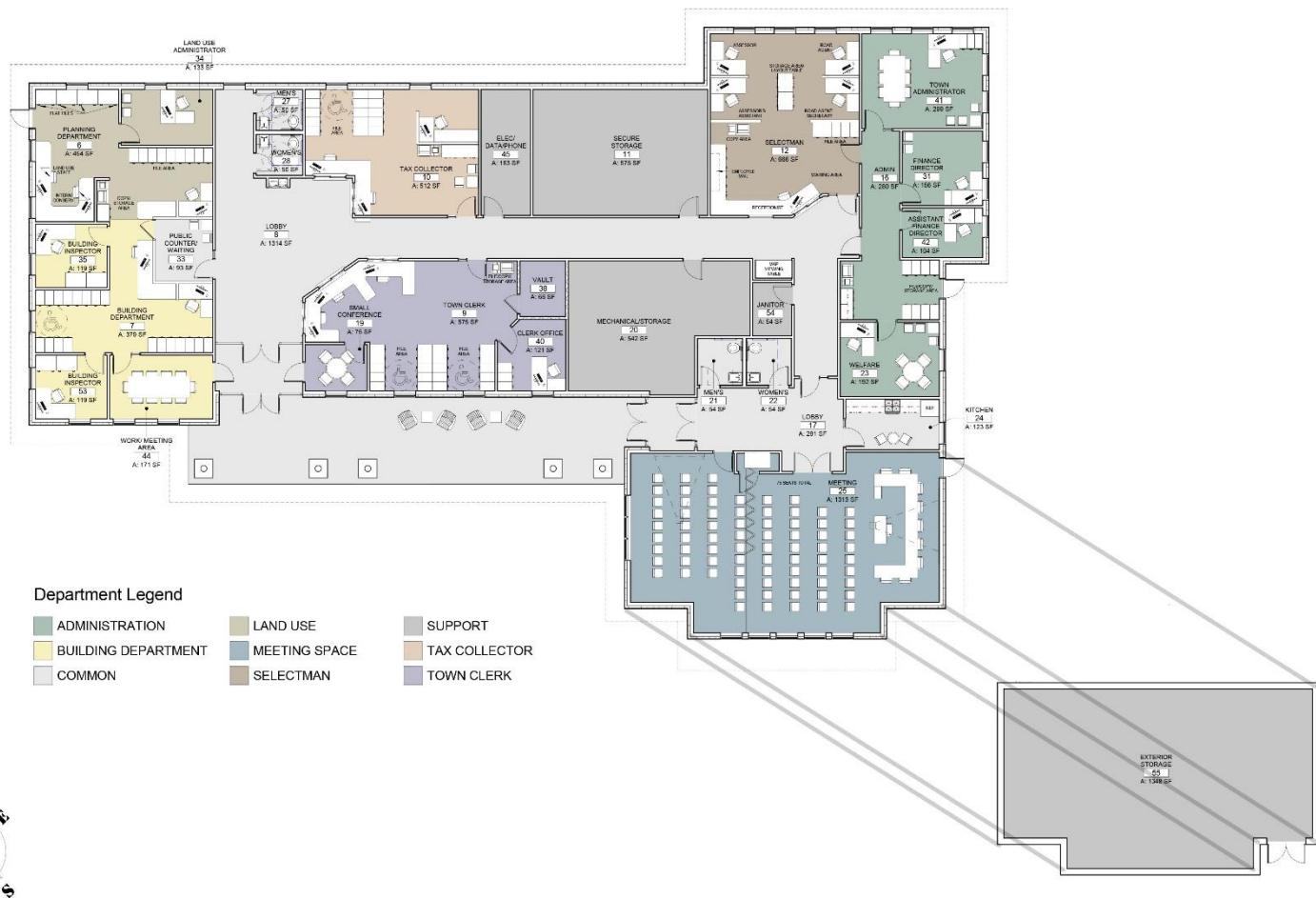
THE CARRIAGE HOUSE  
30 S. MAIN ST., BUILDING TWO  
CONCORD, NH 03301  
603.228.8880

Barrington New Hampshire  
New Town Hall









## BARRINGTON TOWN HALL

Barrington, New Hampshire 03825

SEPTEMBER 8, 2014



THE CARRIAGE HOUSE  
30 S. MAIN ST., BUILDING TWO  
CONCORD, NH 03301  
603.228.8880

Barrington New Hampshire  
New Town Hall



Barrington New Hampshire  
New Town Hall







PHONE: 603.228.8880  
FAX: 603.228.8881  
WWW.SMP-ARCH.COM



# BARRINGTON TOWN OFFICES

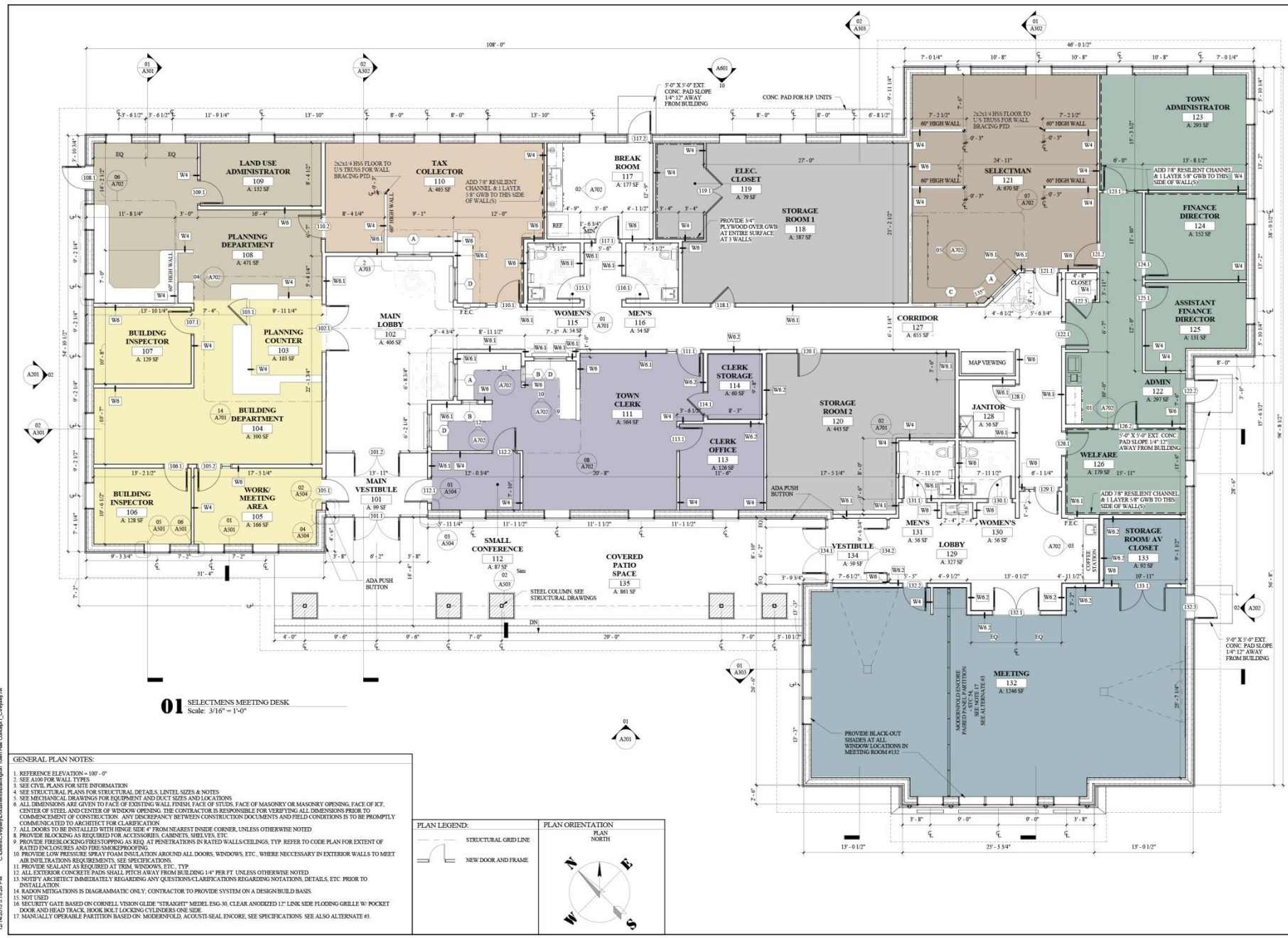
Ramond Lane, Barrington, New Hampshire 03825

MAIN FLOOR PLAN

PROJECT:	001 BID & CONSTRUCTION SET
DRAWN BY:	CV
CHECKED BY:	JL
DATE:	12/11/2015
REVISION:	DATE:

SHEET NUMBER:  
**A101**

© 2015 SMP ARCHITECTURE



**01** SELECT MEN'S MEETING DESK  
Scale: 3/16" = 1'-0"

- GENERAL PLAN NOTES:**
- REFERENCE ELEVATION = 100'-0"
  - SEE A100 FOR WALL TYPES
  - SEE CIVIL PLANS FOR SITE INFORMATION
  - SEE MECHANICAL PLANS FOR STRUCTURAL DETAILS, LINTEL SIZES & NOTES
  - ALL DIMENSIONS ARE GIVEN TO FACE OF EXISTING WALL, FINISH FACE OF STUDS, FACE OF MASONRY OR MASONRY OPENING, FACE OF ICE, CENTER OF STEEL AND CENTER OF WINDOW OPENING. THE CONTRACTOR IS RESPONSIBLE FOR VERIFYING ALL DIMENSIONS PRIOR TO COMMENCEMENT OF CONSTRUCTION. ANY DISCREPANCY BETWEEN CONSTRUCTION DOCUMENTS AND FIELD CONDITIONS IS TO BE PROMPTLY COMMUNICATED TO ARCHITECT FOR CLARIFICATION
  - ALL DOORS TO BE CALLED WITH FINISH SIDE FROM NEAREST INSIDE CORNER, UNLESS OTHERWISE NOTED
  - PROVIDE FIRE RATED GLASS PARTITION AS REQ. AT PENETRATIONS IN RATED WALLS/CEILING. TYP. REFER TO CODE PLAN FOR EXTENT OF RATED ENCLOSURES AND FIRE SMOKEPROOFING
  - PROVIDE LOW PRESSURE SPRAY FOAM INSULATION AROUND ALL DOORS, WINDOWS, ETC., WHERE NECESSARY IN EXTERIOR WALLS TO MEET AIR INFILTRATION REQUIREMENTS. SEE SPECIFICATIONS
  - PROVIDE SEALANT AS REQUIRED AT TRIM, WINDOWS, ETC. TYP.
  - ALL EXTERIOR CONCRETE PADS SHALL FIT AWAY FROM BUILDING 1/4" PER FT. UNLESS OTHERWISE NOTED
  - NOTIFY ARCHITECT IMMEDIATELY REGARDING ANY QUESTIONS/CLARIFICATIONS REGARDING NOTATIONS, DETAILS, ETC. PRIOR TO INSTALLATION
  - RADIANT MITIGATIONS IS DIAGNOSTIC ONLY. CONTRACTOR TO PROVIDE SYSTEM ON A DESIGN-BUILD BASIS
  - NOT NOTED
  - SECURITY GATE BASED ON CORNELL VISION GLIDE "STRASIGHT" MODEL E50-30. CLEAR ANODIZED 12" LINK SIDE FLOODING GRILLE W/ POKET DOOR AND HEAD TRACK. BRONZE GLASS GLIDE ONE SIDE
  - MANUALLY OPERABLE PARTITION BASED ON MODERNFOLD, ACQUISIT-SEAL ENCORE. SEE SPECIFICATIONS. SEE ALSO ALTERNATE #1

**PLAN LEGEND:**

STRUCTURAL GRIDLINE

NEW DOOR AND FRAME

**PLAN ORIENTATION**

PLAN NORTH

# Barrington New Hampshire New Town Hall





PHONE: 603.228.8880  
FAX: 603.228.8881  
WWW.SMP-ARCH.COM



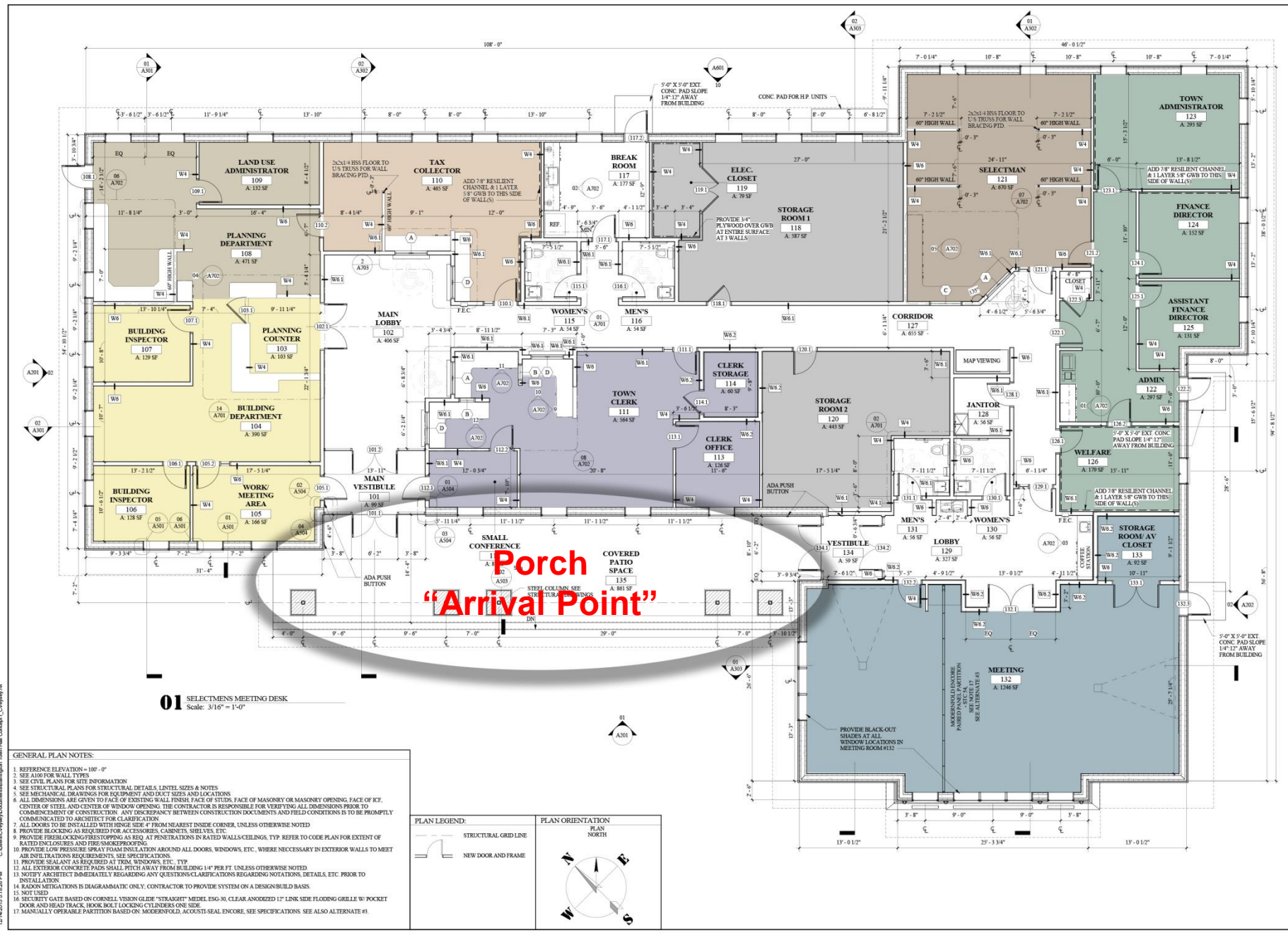
BARRINGTON TOWN OFFICES  
Ranadell Lane, Barrington, New Hampshire 03825

MAIN FLOOR PLAN

PROJECT:	001 BID # CONSTRUCTION SET
DRAWN BY:	CV
CHECKED BY:	JL
DATE:	12/11/2015
REVISION:	DATE:

SHEET NUMBER:  
**A101**

© 2015 SMP ARCHITECTURE



01 SELECTMEN'S MEETING DESK  
Scale: 3/16" = 1'-0"

- GENERAL PLAN NOTES:
1. REFERENCE ELEVATION = 100'-0"
  2. SEE A100 FOR WALL TYPES
  3. SEE CIVIL PLANS FOR SITE INFORMATION
  4. SEE STRUCTURAL PLANS FOR STRUCTURAL DETAILS, LINTEL SIZES & NOTES
  5. SEE MECHANICAL DRAWINGS FOR EQUIPMENT AND DUCT SIZES AND LOCATIONS
  6. ALL DIMENSIONS ARE GIVEN TO FACE OF EXISTING WALL, FINISH FACE OF STUDS, FACE OF MASONRY OR MASONRY OPENING, FACE OF ICE, CENTER OF STEEL AND CENTER OF WINDOW OPENING. THE CONTRACTOR IS RESPONSIBLE FOR VERIFYING ALL DIMENSIONS PRIOR TO COMMENCEMENT OF CONSTRUCTION. ANY DISCREPANCY BETWEEN CONSTRUCTION DOCUMENTS AND FIELD CONDITIONS IS TO BE PROMPTLY COMMUNICATED TO ARCHITECT FOR CLARIFICATION
  7. ALL DOORS TO BE CALLED WITH FINISH SIDE FROM NEAREST INSIDE CORNER, UNLESS OTHERWISE NOTED
  8. PROVIDE BLOCKING AS REQUIRED FOR ACCESSORIES, CABINETS, SHELVES, ETC.
  9. PROVIDE FIRE-RESISTING SPRAY FOAM INSULATION AROUND ALL DOORS, WINDOWS, ETC., WHERE NECESSARY IN EXTERIOR WALLS TO MEET AIR INFILTRATION REQUIREMENTS. SEE SPECIFICATIONS
  10. PROVIDE SEALANT AS REQUIRED AT TRIM, WINDOWS, ETC. TYP
  11. ALL EXTERIOR CONCRETE PADS SHALL FIT AWAY FROM BUILDING 1/4" PER FT. UNLESS OTHERWISE NOTED
  12. NOTIFY ARCHITECT IMMEDIATELY REGARDING ANY QUESTIONS/CLARIFICATIONS REGARDING NOTATIONS, DETAILS, ETC. PRIOR TO INSTALLATION
  13. RADON MITIGATIONS IS DIAGNOSTIC ONLY. CONTRACTOR TO PROVIDE SYSTEM ON A DESIGN-BUILD BASIS
  14. NOTIFIED
  15. SECURITY GATE BASED ON CORNELL VISION GLIDE "STRASIGHT" MODEL ESG-30, CLEAR ANODIZED 12" LINK SIDE FLOODING GRILLE W/ POKET DOOR AND HEAD TRACK. BRONZE LOCKING CYLINDER ONE SIDE
  16. MANUALLY OPERABLE PARTITION BASED ON MODERNFOLD, ACQUISIT-SEAL ENCORE. SEE SPECIFICATIONS. SEE ALSO ALTERNATE #1

PLAN LEGEND:

STRUCTURAL GRIDLINE

NEW DOOR AND FRAME

PLAN ORIENTATION

PLAN NORTH

# Barrington New Hampshire New Town Hall







PHONE: 603.228.8880  
FAX: 603.228.8881  
WWW.SMP-ARCH.COM



# BARRINGTON TOWN OFFICES

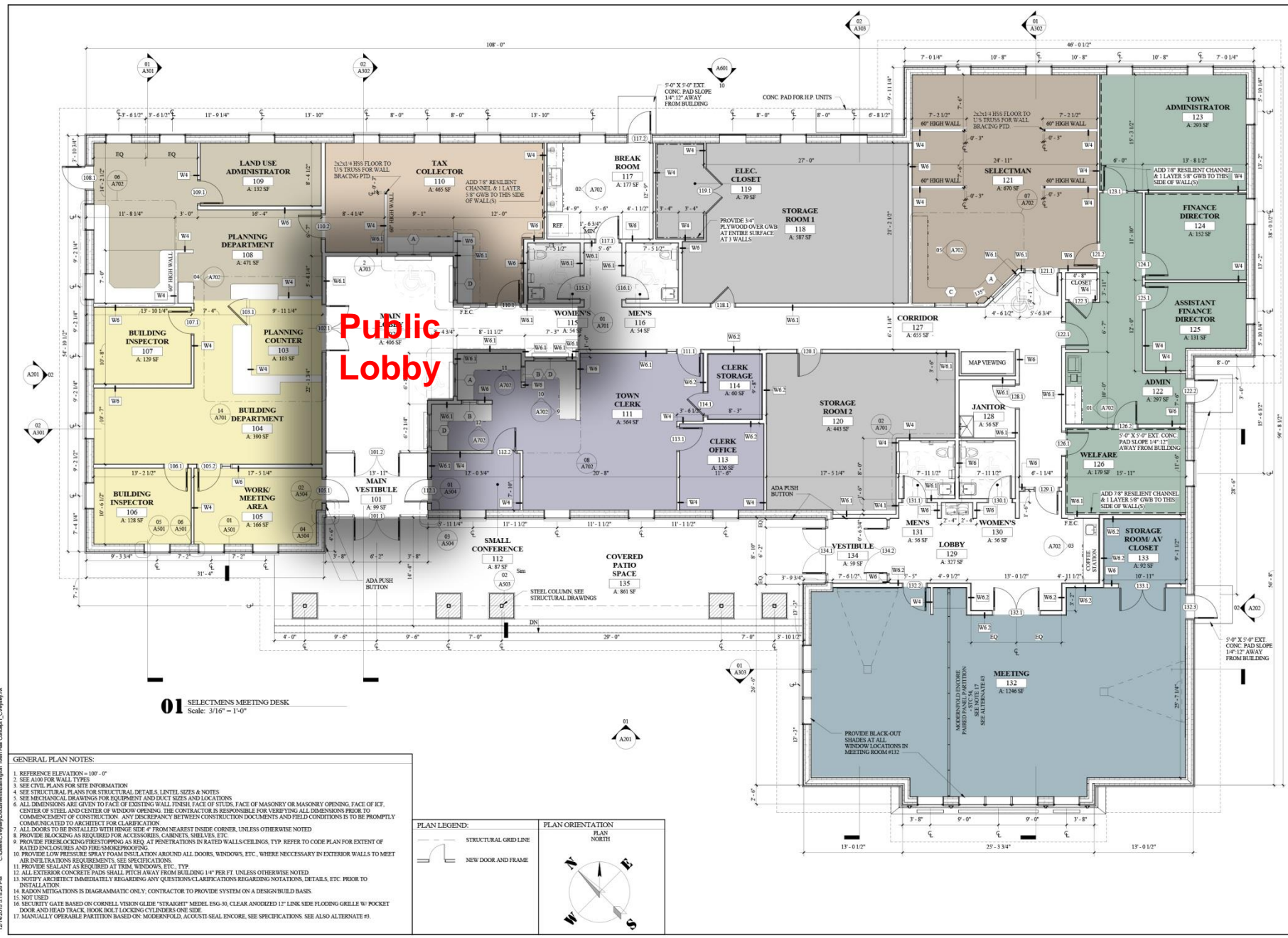
Ramond Lane, Barrington, New Hampshire 03825

MAIN FLOOR PLAN

PROJECT:	001 BDO + CONSTRUCTION SET
DRAWN BY:	CV
CHECKED BY:	JL
DATE:	12/11/2015
REVISION:	DATE:

SHEET NUMBER:  
**A101**

© 2015 SMP ARCHITECTURE



01 SELECTMEN'S MEETING DESK  
Scale: 3/16" = 1'-0"

- GENERAL PLAN NOTES:
- REFERENCE ELEVATION = 100'-0"
  - SEE A100 FOR WALL TYPES
  - SEE CIVIL PLANS FOR SITE INFORMATION
  - SEE MECHANICAL PLANS FOR STRUCTURAL DETAILS, LINTEL SIZES & NOTES
  - ALL DIMENSIONS ARE GIVEN TO FACE OF EXISTING WALL, FINISH FACE OF STUDS, FACE OF MASONRY OR MASONRY OPENING, FACE OF ICE, CENTER OF STEEL AND CENTER OF WINDOW OPENING. THE CONTRACTOR IS RESPONSIBLE FOR VERIFYING ALL DIMENSIONS PRIOR TO COMMENCEMENT OF CONSTRUCTION. ANY DISCREPANCY BETWEEN CONSTRUCTION DOCUMENTS AND FIELD CONDITIONS IS TO BE PROMPTLY COMMUNICATED TO ARCHITECT FOR CLARIFICATION
  - ALL DOORS TO BE CALLED WITH FINISH SIDE FROM NEAREST INSIDE CORNER, UNLESS OTHERWISE NOTED
  - PROVIDE FIRE RATED GLASS PARTITION AS REQ. AT PENETRATIONS IN RATED WALLS/CEILING. TYP. REFER TO CODE PLAN FOR EXTENT OF RATED ENCLOSURES AND FIRE SMOKEPROOFING
  - PROVIDE LOW PRESSURE SPRAY FOAM INSULATION AROUND ALL DOORS, WINDOWS, ETC., WHERE NECESSARY IN EXTERIOR WALLS TO MEET AIR INFILTRATION REQUIREMENTS. SEE SPECIFICATIONS
  - PROVIDE SEALANT AS REQUIRED AT TRIM, WINDOWS, ETC. TYP.
  - ALL EXTERIOR CONCRETE PADS SHALL FIT AWAY FROM BUILDING 1/4" PER FT. UNLESS OTHERWISE NOTED
  - NOTIFY ARCHITECT IMMEDIATELY REGARDING ANY QUESTIONS/CLARIFICATIONS REGARDING NOTATIONS, DETAILS, ETC. PRIOR TO INSTALLATION
  - RADIANT MITIGATIONS IS DIAGNOSTIC ONLY. CONTRACTOR TO PROVIDE SYSTEM ON A DESIGN-BUILD BASIS
  - NOT NOTED
  - SECURITY GATE BASED ON CORNELL VISION GLIDE "TRASIGHT" MODEL E50-30. CLEAR ANODIZED 12" LINE SIDE FLOODING GRILLE W/ POKET DOOR AND HEAD TRACK. BRONZE GLASS GLIDE ONE SIDE
  - MANUALLY OPERABLE PARTITION BASED ON MODERNFOLD, ACQUISIT-SEAL ENCORE. SEE SPECIFICATIONS. SEE ALSO ALTERNATE #3

PLAN LEGEND:

STRUCTURAL GRIDLINE

NEW DOOR AND FRAME

PLAN ORIENTATION

PLAN NORTH

# Barrington New Hampshire New Town Hall





PHONE: 603.228.8880  
FAX: 603.228.8881  
WWW.SMP-ARCH.COM



# BARRINGTON TOWN OFFICES

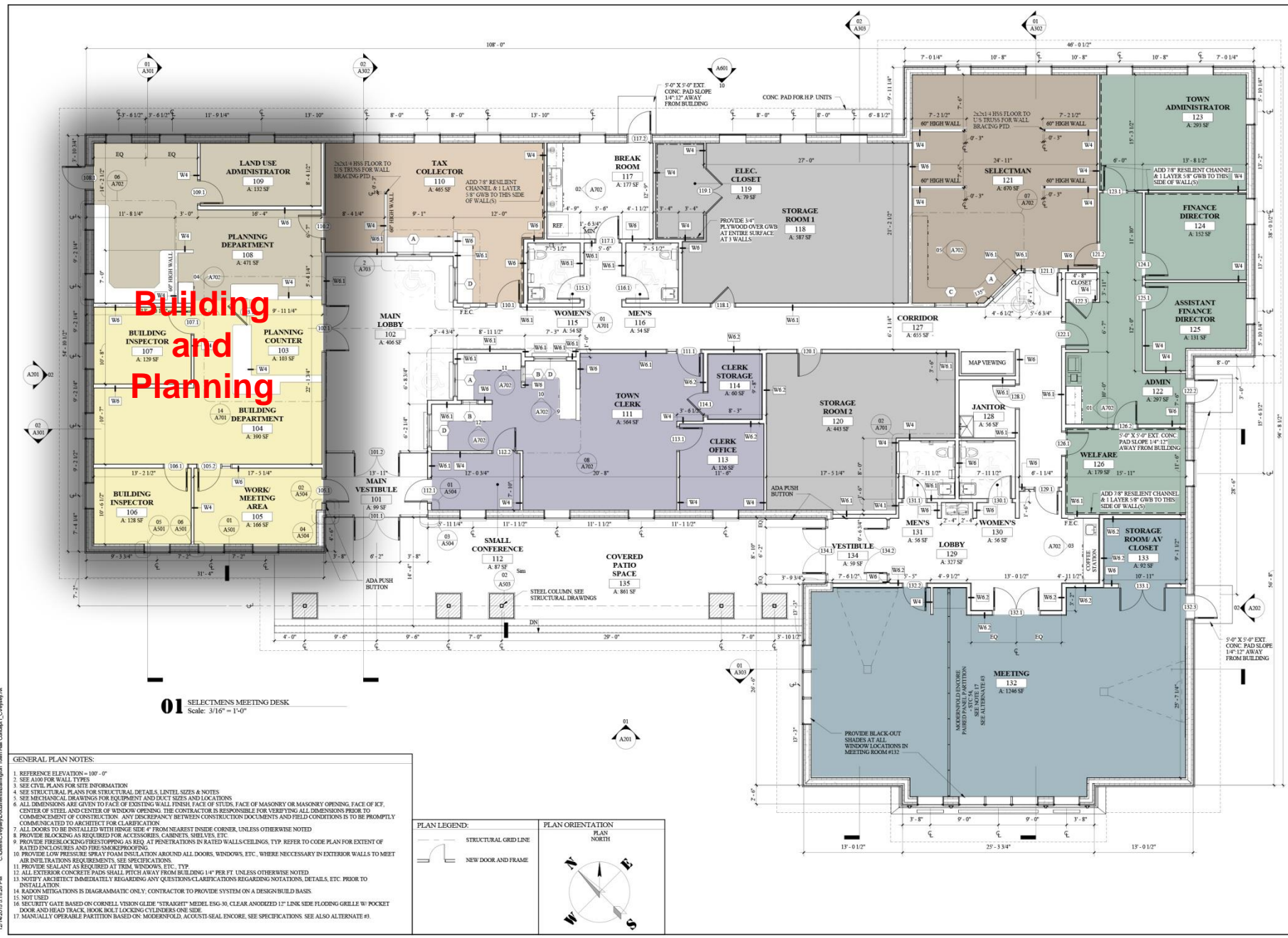
Ramond Lane, Barrington, New Hampshire 03825

MAIN FLOOR PLAN

PROJECT:	001 BID # CONSTRUCTION SET
DRAWN BY:	CV
CHECKED BY:	JL
DATE:	12/11/2015
REVISION:	DATE:

SHEET NUMBER:  
**A101**

© 2015 SMP ARCHITECTURE



**Building  
and  
Planning**

**01** SELECTMEN'S MEETING DESK  
Scale: 3/16" = 1'-0"

- GENERAL PLAN NOTES:
1. REFERENCE ELEVATION = 100'-0"
  2. SEE A100 FOR WALL TYPES
  3. SEE CIVIL PLANS FOR SITE INFORMATION
  4. SEE STRUCTURAL PLANS FOR STRUCTURAL DETAILS, LINTEL SIZES & NOTES
  5. SEE MECHANICAL DRAWINGS FOR EQUIPMENT AND DUCT SIZES AND LOCATIONS
  6. ALL DIMENSIONS ARE GIVEN TO FACE OF EXISTING WALL, FINISH FACE OF STUDS, FACE OF MASONRY OR MASONRY OPENING, FACE OF ICE, CENTER OF STEEL AND CENTER OF WINDOW OPENING. THE CONTRACTOR IS RESPONSIBLE FOR VERIFYING ALL DIMENSIONS PRIOR TO COMMENCEMENT OF CONSTRUCTION. ANY DISCREPANCY BETWEEN CONSTRUCTION DOCUMENTS AND FIELD CONDITIONS IS TO BE PROMPTLY COMMUNICATED TO ARCHITECT FOR CLARIFICATION
  7. ALL DOORS TO BE CALLED WITH FINISH SIDE FROM NEAREST INSIDE CORNER, UNLESS OTHERWISE NOTED
  8. PROVIDE BLOCKING AS REQUIRED FOR ACCESSORIES, CABINETS, SHELVES, ETC.
  9. PROVIDE FIRE-RESISTANT SPRAY FOAM INSULATION AROUND ALL DOORS, WINDOWS, ETC., WHERE NECESSARY IN EXTERIOR WALLS TO MEET AIR INFILTRATION REQUIREMENTS. SEE SPECIFICATIONS
  10. PROVIDE SEALANT AS REQUIRED AT TRIM, WINDOWS, ETC. TYP.
  11. ALL EXTERIOR CONCRETE PADS SHALL FIT AWAY FROM BUILDING 1/4" PER FT. UNLESS OTHERWISE NOTED
  12. NOTIFY ARCHITECT IMMEDIATELY REGARDING ANY QUESTIONS/CLARIFICATIONS REGARDING NOTATIONS, DETAILS, ETC. PRIOR TO INSTALLATION
  13. RADON MITIGATIONS IS DIAGNOSTIC ONLY. CONTRACTOR TO PROVIDE SYSTEM ON A DESIGN-BUILD BASIS
  14. NOTIFIED
  15. SECURITY GATE BASED ON CORNELL VISION GLIDE "TRAKIGHT" MODEL ESO-30. CLEAR ANNOYED 12" LINK SIDE FLOODING GRILLE W/ POKET DOOR AND HEAD TRACK. BRONZE LOCKING CYLINDERS ONE SIDE
  16. MANUALLY OPERABLE PARTITION BASED ON MODERNFOLD, ACQUISIT-SEAL ENCORE. SEE SPECIFICATIONS. SEE ALSO ALTERNATE #1

PLAN LEGEND:  
STRUCTURAL GRIDLINE  
NEW DOOR AND FRAME



12/14/2015 11:13:29 AM C:\Users\j\OneDrive\Documents\Barrington Town Hall Concept\1\_Coverpage.dwg





PHONE: 603.228.8880  
FAX: 603.228.8881  
WWW.SMP-ARCH.COM



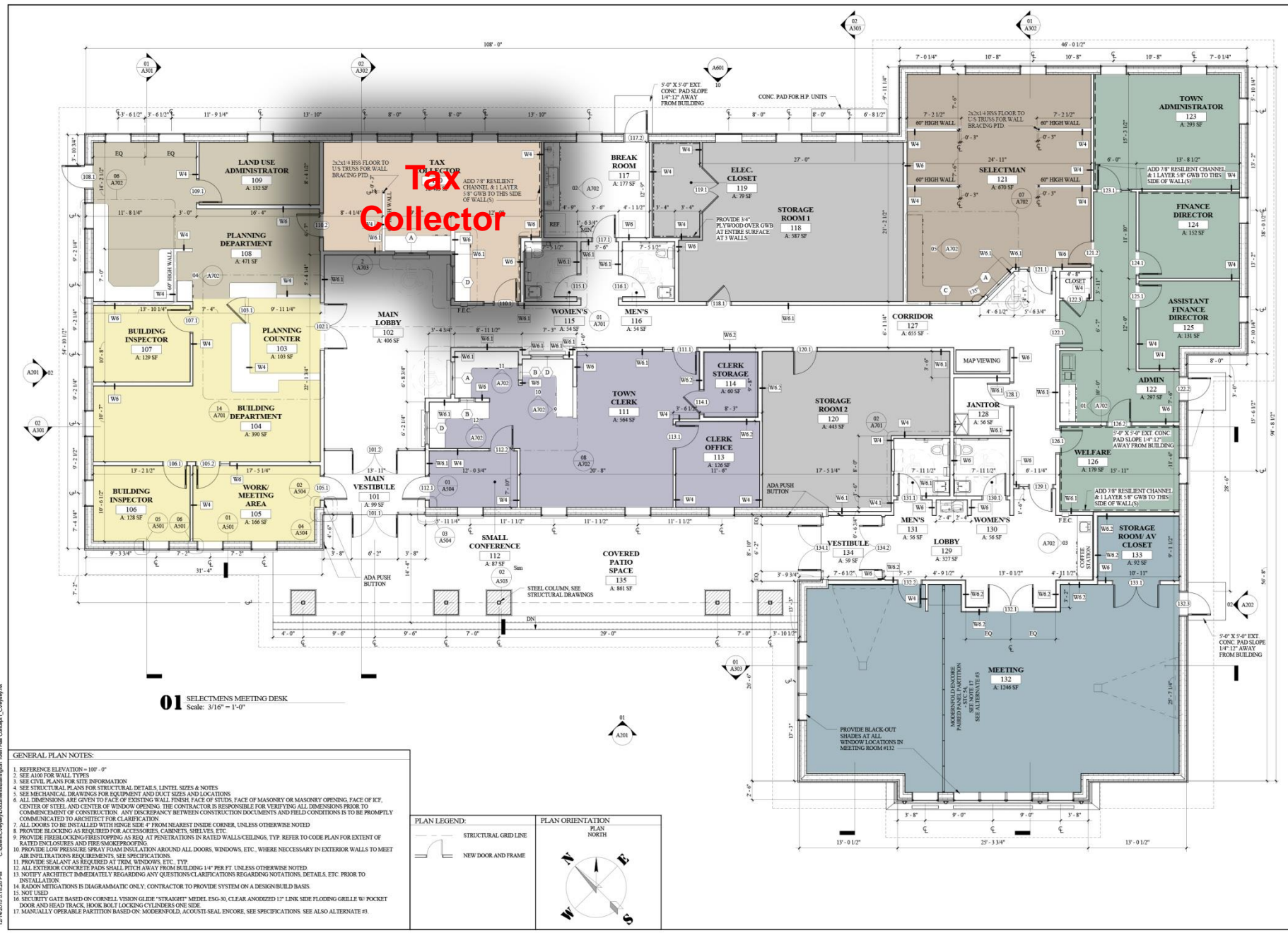
BARRINGTON TOWN OFFICES  
Ranadell Lane, Barrington, New Hampshire 03825

MAIN FLOOR PLAN

PROJECT:	001 BID # CONSTRUCTION SET
DRAWN BY:	CV
CHECKED BY:	JL
DATE:	12/11/2015
REVISION:	DATE:

SHEET NUMBER:  
**A101**

© 2015 SMP ARCHITECTURE



**01** SELECT MEN'S MEETING DESK  
Scale: 3/16" = 1'-0"

- GENERAL PLAN NOTES:
1. REFERENCE ELEVATION = 100'-0"
  2. SEE A100 FOR WALL TYPES
  3. SEE CIVIL PLANS FOR SITE INFORMATION
  4. SEE STRUCTURAL PLANS FOR STRUCTURAL DETAILS, LINTEL SIZES & NOTES
  5. SEE MECHANICAL DRAWINGS FOR EQUIPMENT AND DUCT SIZES AND LOCATIONS
  6. ALL DIMENSIONS ARE GIVEN TO FACE OF EXISTING WALL, FINISH FACE OF STUDS, FACE OF MASONRY OR MASONRY OPENING, FACE OF ICE, CENTER OF STEEL AND CENTER OF WINDOW OPENING. THE CONTRACTOR IS RESPONSIBLE FOR VERIFYING ALL DIMENSIONS PRIOR TO COMMENCEMENT OF CONSTRUCTION. ANY DISCREPANCY BETWEEN CONSTRUCTION DOCUMENTS AND FIELD CONDITIONS IS TO BE PROMPTLY COMMUNICATED TO ARCHITECT FOR CLARIFICATION
  7. ALL DOORS TO BE CALLED WITH FINISH SIDE FROM NEAREST INSIDE CORNER, UNLESS OTHERWISE NOTED
  8. PROVIDE BLOCKING AS REQUIRED FOR ACCESSORIES, CABINETS, SHELVES, ETC.
  9. PROVIDE FIRE-RESISTANT SPRAY FOAM INSULATION AROUND ALL DOORS, WINDOWS, ETC., WHERE NECESSARY IN EXTERIOR WALLS TO MEET AIR INFILTRATION REQUIREMENTS. SEE SPECIFICATIONS
  10. PROVIDE SEALANT AS REQUIRED AT TRIM, WINDOWS, ETC. TYP
  11. ALL EXTERIOR CONCRETE PADS SHALL FIT AWAY FROM BUILDING 1/4" PER FT. UNLESS OTHERWISE NOTED
  12. NOTIFY ARCHITECT IMMEDIATELY REGARDING ANY QUESTIONS/CLARIFICATIONS REGARDING NOTATIONS, DETAILS, ETC. PRIOR TO INSTALLATION
  13. RADON MITIGATIONS IS DIAGNOSTIC ONLY. CONTRACTOR TO PROVIDE SYSTEM ON A DESIGN-BUILD BASIS
  14. NOTIFIED
  15. SECURITY GATE BASED ON CORNELL VISION GLIDE "STRASIGHT" MODEL E30-30. CLEAR ANODIZED 12" LINK SIDE FLOODING GRILLE W/ POCKET DOOR AND HEAD TRACK. BRONZE LOCKING CYLINDERS ONE SIDE
  16. MANUALLY OPERABLE PARTITION BASED ON MODERNFOLD, ACQUISIT-SEAL ENCORE. SEE SPECIFICATIONS. SEE ALSO ALTERNATE #3

PLAN LEGEND:

STRUCTURAL GRIDLINE

NEW DOOR AND FRAME

PLAN ORIENTATION

PLAN NORTH

# Barrington New Hampshire New Town Hall





PHONE: 603.228.8880  
FAX: 603.228.8881  
WWW.SMP-ARCH.COM



BARRINGTON TOWN OFFICES

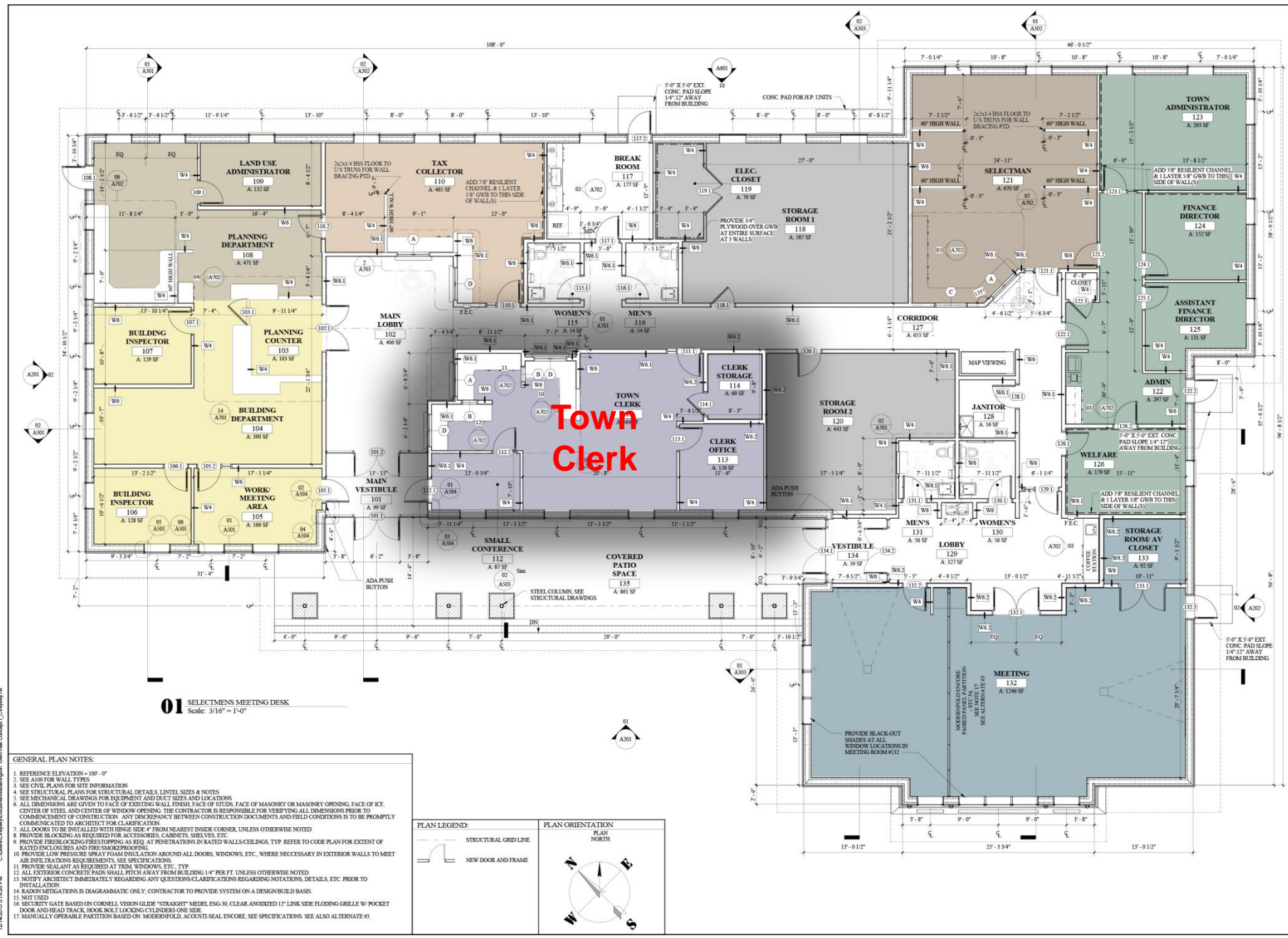
Ramond Lane, Barrington, New Hampshire 03225

MAIN FLOOR PLAN

PROJECT:	001 BDO & CONSTRUCTION SET
DRAWN BY:	CV
CHECKED BY:	JL
DATE:	12/11/2015
REVISION:	
DATE:	

SHEET NUMBER:  
**A101**

© 2015 SMP ARCHITECTURE



01 SELECTMEN'S MEETING DESK  
Scale: 3/16" = 1'-0"

- GENERAL PLAN NOTES:
1. REFERENCE ELEVATION = 100'-0"
  2. SEE A100 FOR WALL TYPES
  3. SEE CIVIL PLANS FOR SITE INFORMATION
  4. SEE STRUCTURAL PLANS FOR STRUCTURAL DETAILS, LINTEL SIZES & NOTES
  5. SEE MECHANICAL DRAWINGS FOR EQUIPMENT AND DUCT SIZES AND LOCATIONS
  6. ALL DIMENSIONS ARE GIVEN TO FACE OF EXISTING WALL, FINISH FACE OF STUDS, FACE OF MASONRY OR MASONRY OPENING, FACE OF ICE, CENTER OF STEEL AND CENTER OF WINDOW OPENING. THE CONTRACTOR IS RESPONSIBLE FOR VERIFYING ALL DIMENSIONS PRIOR TO COMMENCEMENT OF CONSTRUCTION. ANY DISCREPANCY BETWEEN CONSTRUCTION DOCUMENTS AND FIELD CONDITIONS IS TO BE PROMPTLY COMMUNICATED TO ARCHITECT FOR CLARIFICATION
  7. ALL DOORS TO BE CALLED WITH FINISH SIDE FROM NEAREST INSIDE CORNER, UNLESS OTHERWISE NOTED
  8. PROVIDE BLOCKING AS REQUIRED FOR ACCESSORIES, CABINETS, SHELVES, ETC.
  9. PROVIDE FIRE-RESISTANT SPRAY FOAM INSULATION AROUND ALL DOORS, WINDOWS, ETC., WHERE NECESSARY IN EXTERIOR WALLS TO MEET AIR INFILTRATION REQUIREMENTS. SEE SPECIFICATIONS
  10. PROVIDE SEALANT AS REQUIRED AT TRIM, WINDOWS, ETC. TYP
  11. ALL EXTERIOR CONCRETE PADS SHALL FIT AWAY FROM BUILDING 1/4" PER FT. UNLESS OTHERWISE NOTED
  12. NOTIFY ARCHITECT IMMEDIATELY REGARDING ANY QUESTIONS/CLARIFICATIONS REGARDING NOTATIONS, DETAILS, ETC. PRIOR TO INSTALLATION
  13. RADON MITIGATIONS IS DIAGNOSTIC ONLY. CONTRACTOR TO PROVIDE SYSTEM ON A DESIGN-BUILD BASIS
  14. NOTIFIED
  15. SECURITY GATE BASED ON CORNELL VISION GLIDE "TRAKIGHT" MODEL E50-30, CLEAR ANODIZED 12" LINK SIDE FLOODING GRILLE W/ POKET DOOR AND HEAD TRACK. BRONZE LOCKING CYLINDER ONE SIDE
  16. MANUALLY OPERABLE PARTITION BASED ON MODERNFOLD, ACQUISIT-SEAL ENCORE. SEE SPECIFICATIONS. SEE ALSO ALTERNATE #3

PLAN LEGEND:

STRUCTURAL GRIDLINE

NEW DOOR AND FRAME

PLAN ORIENTATION

PLAN NORTH

# Barrington New Hampshire New Town Hall







PHONE: 603.228.8880  
FAX: 603.228.8881  
WWW.SMP-ARCH.COM



BARRINGTON TOWN OFFICES

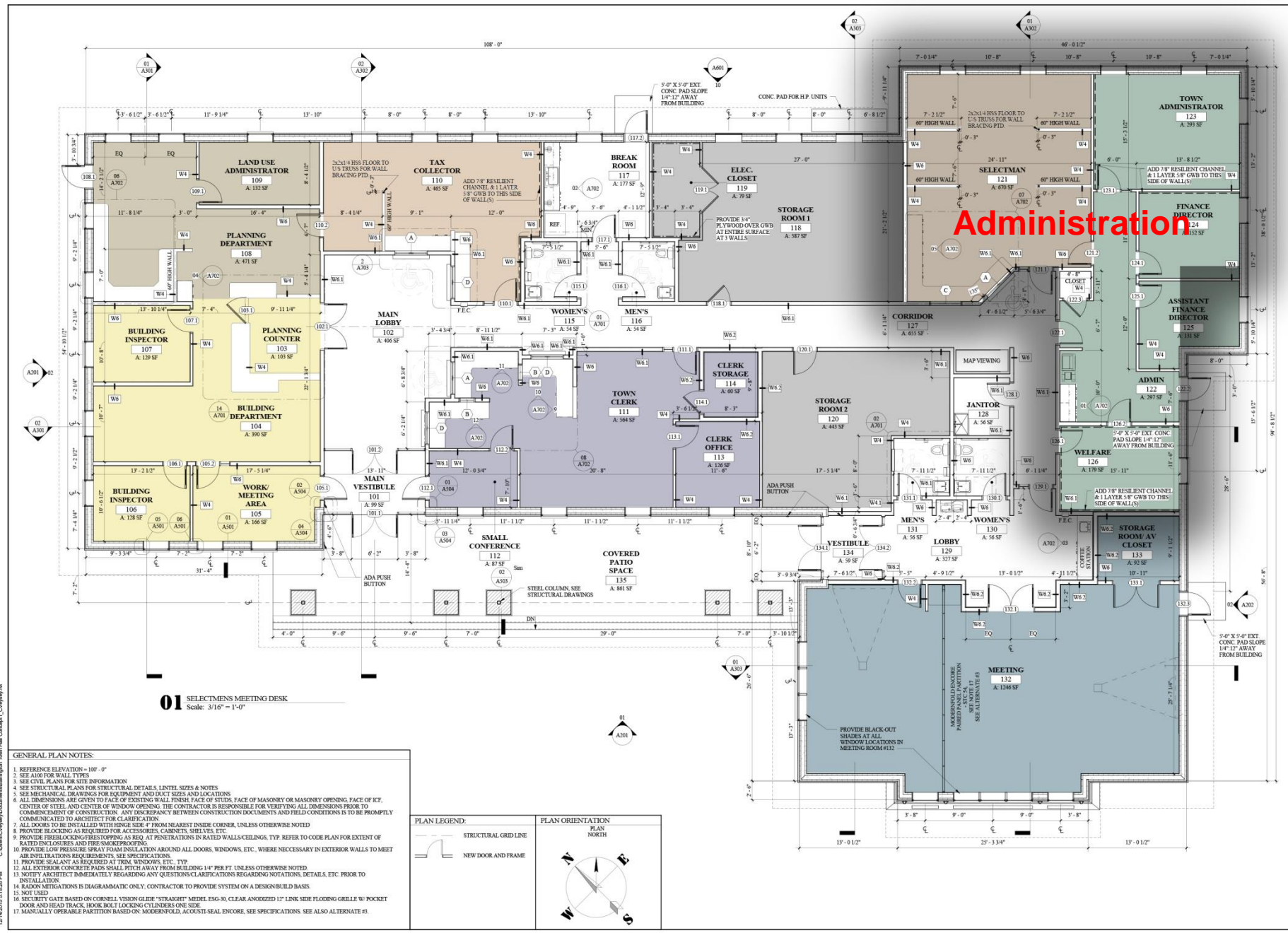
Ramond Lane, Barrington, New Hampshire 03825

MAIN FLOOR PLAN

PROJECT:	001 BDO & CONSTRUCTION SET
DRAWN BY:	CV
CHECKED BY:	JL
DATE:	12/11/2015
REVISION:	DATE:

SHEET NUMBER:  
**A101**

© 2015 SMP ARCHITECTURE



01 SELECTMEN'S MEETING DESK  
Scale: 3/16" = 1'-0"

- GENERAL PLAN NOTES:
1. REFERENCE ELEVATION = 100'-0"
  2. SEE A100 FOR WALL TYPES
  3. SEE CIVIL PLANS FOR SITE INFORMATION
  4. SEE STRUCTURAL PLANS FOR STRUCTURAL DETAILS, LINTEL SIZES & NOTES
  5. SEE MECHANICAL DRAWINGS FOR EQUIPMENT AND DUCT SIZES AND LOCATIONS
  6. ALL DIMENSIONS ARE GIVEN TO FACE OF EXISTING WALL, FINISH FACE OF STUDS, FACE OF MASONRY OR MASONRY OPENING, FACE OF ICE, CENTER OF STEEL AND CENTER OF WINDOW OPENING. THE CONTRACTOR IS RESPONSIBLE FOR VERIFYING ALL DIMENSIONS PRIOR TO COMMENCEMENT OF CONSTRUCTION. ANY DISCREPANCY BETWEEN CONSTRUCTION DOCUMENTS AND FIELD CONDITIONS IS TO BE PROMPTLY COMMUNICATED TO ARCHITECT FOR CLARIFICATION
  7. ALL DOORS TO BE CALLED WITH FINISH SIDE FROM NEAREST INSIDE CORNER, UNLESS OTHERWISE NOTED
  8. PROVIDE BLOCKING AS REQUIRED FOR ACCESSORIES, CABINETS, SHELVES, ETC.
  9. PROVIDE FIRE-RESISTANT SPRAY FOAM INSULATION AROUND ALL DOORS, WINDOWS, ETC., WHERE NECESSARY IN EXTERIOR WALLS TO MEET AIR INFILTRATION REQUIREMENTS. SEE SPECIFICATIONS
  10. PROVIDE SEALANT AS REQUIRED AT TRIM, WINDOWS, ETC., TYP.
  11. ALL EXTERIOR CONCRETE PADS SHALL FIT AWAY FROM BUILDING 1/4" PER FT. UNLESS OTHERWISE NOTED
  12. NOTIFY ARCHITECT IMMEDIATELY REGARDING ANY QUESTIONS/CLARIFICATIONS REGARDING NOTATIONS, DETAILS, ETC. PRIOR TO INSTALLATION
  13. RADON MITIGATIONS IS DIAGNOSTIC ONLY. CONTRACTOR TO PROVIDE SYSTEM ON A DESIGN-BUILD BASIS
  14. NOTIFIED
  15. SECURITY GATE BASED ON CORNELL VISION GLIDE "STRASIGHT" MODEL E30-30. CLEAR ANODIZED 12" LINK SIDE FLOODING GRILLE W/ POKET DOOR AND HEAD TRACK. BRONZE LOCKING CYLINDERS ONE SIDE
  16. MANUALLY OPERABLE PARTITION BASED ON MODERNFOLD, ACQUISIT-SEAL ENCORE. SEE SPECIFICATIONS. SEE ALSO ALTERNATE #1

PLAN LEGEND:

STRUCTURAL GRIDLINE

NEW DOOR AND FRAME

PLAN ORIENTATION

PLAN NORTH

# Barrington New Hampshire New Town Hall





PHONE: 603.228.8880  
FAX: 603.228.8881  
WWW.SMP-ARCH.COM



# BARRINGTON TOWN OFFICES

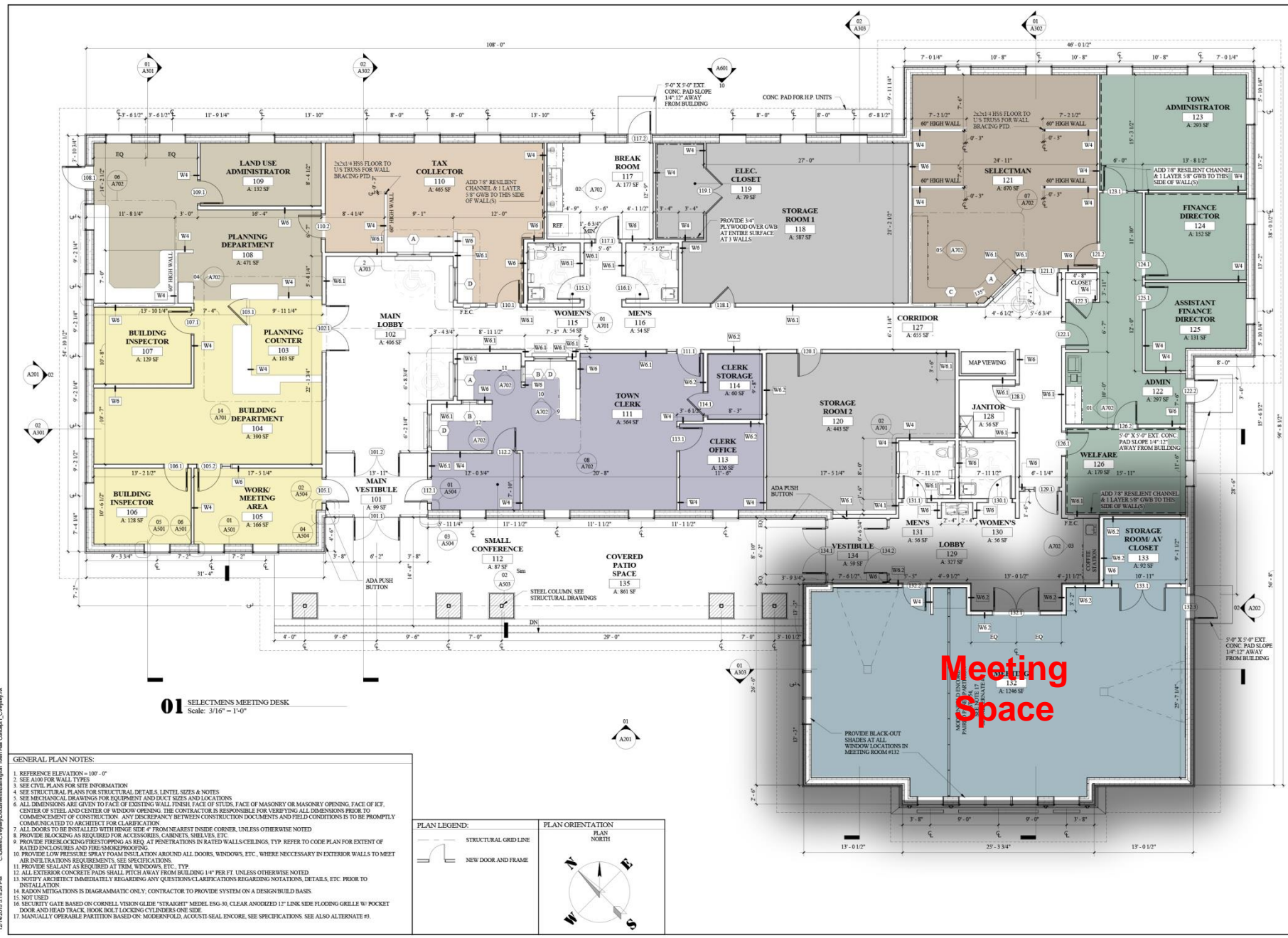
Ramond Lane, Barrington, New Hampshire 03825

MAIN FLOOR PLAN

PROJECT:	001 BID & CONSTRUCTION SET
DRAWN BY:	CV
CHECKED BY:	JL
DATE:	12/11/2015
REVISION:	DATE:

SHEET NUMBER:  
**A101**

© 2015 SMP ARCHITECTURE



**01** SELECTMEN'S MEETING DESK  
Scale: 3/16" = 1'-0"

- GENERAL PLAN NOTES:
1. REFERENCE ELEVATION = 100'-0"
  2. SEE A100 FOR WALL TYPES
  3. SEE CIVIL PLANS FOR SITE INFORMATION
  4. SEE A100 FOR STRUCTURAL DETAILS, LINTEL SIZES & NOTES
  5. SEE MECHANICAL DRAWINGS FOR EQUIPMENT AND DUCT SIZES AND LOCATIONS
  6. ALL DIMENSIONS ARE GIVEN TO FACE OF EXISTING WALL, FINISH FACE OF STUDS, FACE OF MASONRY OR MASONRY OPENING, FACE OF ICE, CENTER OF STEEL AND CENTER OF WINDOW OPENING. THE CONTRACTOR IS RESPONSIBLE FOR VERIFYING ALL DIMENSIONS PRIOR TO COMMENCEMENT OF CONSTRUCTION. ANY DISCREPANCY BETWEEN CONSTRUCTION DOCUMENTS AND FIELD CONDITIONS IS TO BE PROMPTLY COMMUNICATED TO ARCHITECT FOR CLARIFICATION
  7. ALL DOORS TO BE CALLED WITH FINISH SIDE FROM NEAREST INSIDE CORNER, UNLESS OTHERWISE NOTED
  8. PROVIDE BLOCKING AS REQUIRED FOR ACCESSORIES, CABINETS, SHELVES, ETC.
  9. PROVIDE FIRE-RESISTING TOPPING AS REQ. AT PENETRATIONS IN RATED WALLS/CEILING. TYP. REFER TO CODE PLAN FOR EXTENT OF RATED ENCLOSURES AND FIRE-SMOKEPROOFING
  10. PROVIDE LOW PRESSURE SPRAY FOAM INSULATION AROUND ALL DOORS, WINDOWS, ETC., WHERE NECESSARY IN EXTERIOR WALLS TO MEET AIR INFILTRATION REQUIREMENTS. SEE SPECIFICATIONS
  11. PROVIDE SEALANT AS REQUIRED AT TRIM, WINDOWS, ETC. TYP.
  12. ALL EXTERIOR CONCRETE PADS SHALL FIT AWAY FROM BUILDING 1/4" PER FT. UNLESS OTHERWISE NOTED
  13. NOTIFY ARCHITECT IMMEDIATELY REGARDING ANY QUESTIONS/CLARIFICATIONS REGARDING NOTATIONS, DETAILS, ETC. PRIOR TO INSTALLATION
  14. RADON MITIGATIONS IS DIAGNOSTIC ONLY. CONTRACTOR TO PROVIDE SYSTEM ON A DESIGN-BUILD BASIS
  15. NOTIFIED
  16. SECURITY GATE BASED ON CORNELL VISION GLIDE "STRASIGHT" MODEL E30-30. CLEAR ANNOYED 12" LINK SIDE FLOODING GRILLE W/ POCKET DOOR AND HEAD TRACK. BRONX BOLT LOCKING CYLINDER ONE SIDE
  17. MANUALLY OPERABLE PARTITION BASED ON MODERNFOLD, ACQUISIT-SEAL ENCORE. SEE SPECIFICATIONS. SEE ALSO ALTERNATE #3

PLAN LEGEND:

STRUCTURAL GRID LINE

NEW DOOR AND FRAME

PLAN ORIENTATION

PLAN NORTH

# Barrington New Hampshire New Town Hall











PHONE: 603.228.8880  
FAX: 603.228.8881  
WWW.SMPA.COM

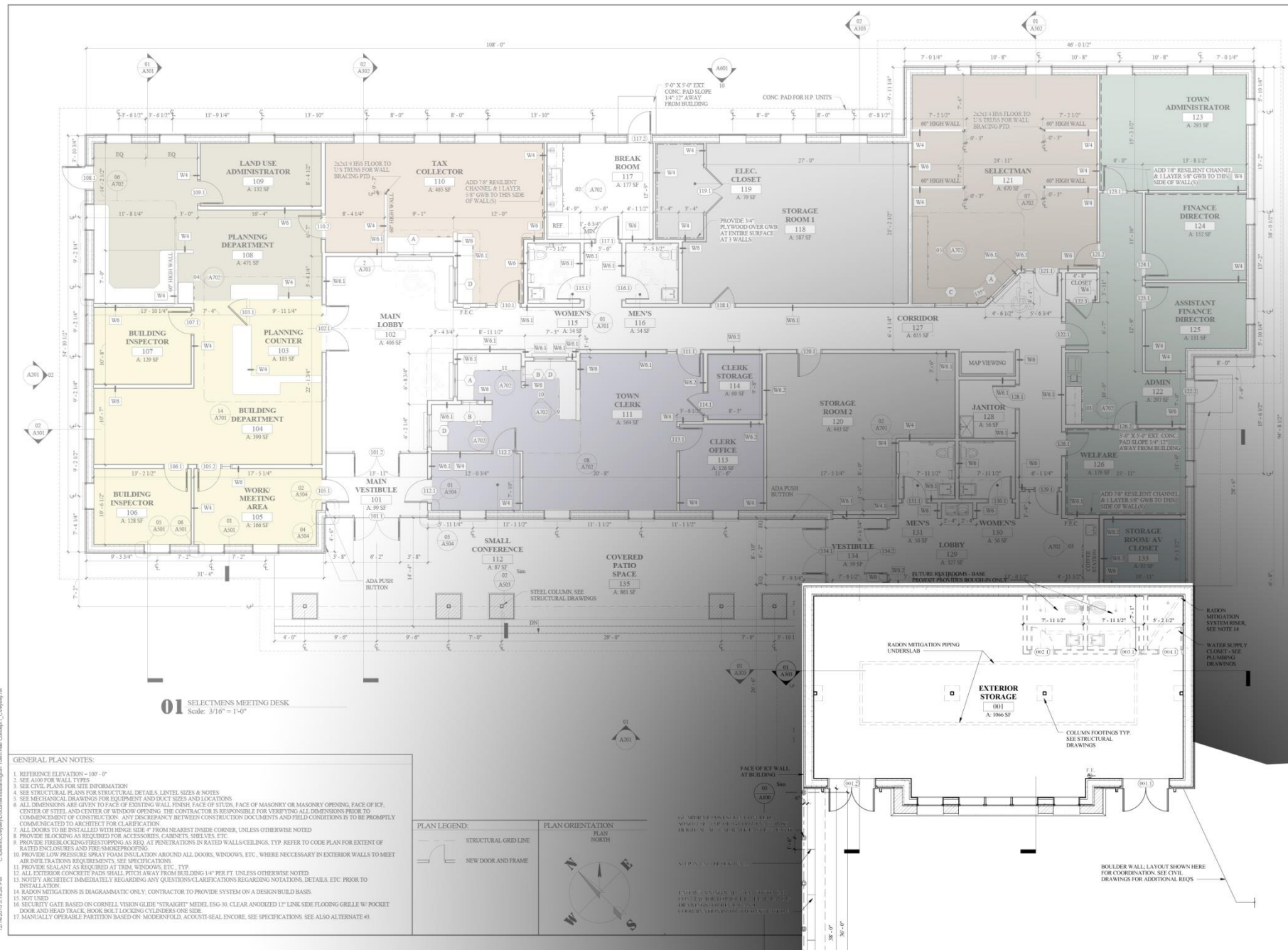


BARRINGTON TOWN OFFICES

Barrington Lane, Barrington, New Hampshire 03825

MAIN FLOOR PLAN

PROJECT: 001 BTD & CONSTRUCTION SET  
DATE: 11/12/12  
DRAWN BY: CV  
CHECKED BY: JH  
DATE: 11/12/12



01 SELECTMEN'S MEETING DESK  
Scale: 3/16" = 1'-0"

- GENERAL PLAN NOTES:
1. REFERENCE ELEVATION = 100'-0"
  2. SEE A100 FOR WALL TYPES
  3. SEE CIVIL PLANS FOR SITE INFORMATION
  4. SEE STRUCTURAL PLANS FOR STRUCTURAL DETAILS, LINTEL SIZES & NOTES
  5. SEE MECHANICAL DRAWINGS FOR EQUIPMENT AND DUCT SIZES AND LOCATIONS
  6. ALL DIMENSIONS ARE GIVEN TO FACE OF EXISTING WALL FINISH, FACE OF STUDS, FACE OF MASONRY OR MASONRY OPENING, FACE OF ICE, CENTER OF STEEL AND CENTER OF WINDOW OPENING. THE CONTRACTOR IS RESPONSIBLE FOR VERIFYING ALL DIMENSIONS PRIOR TO COMMENCEMENT OF CONSTRUCTION. ANY DISCREPANCY BETWEEN CONSTRUCTION DOCUMENTS AND FIELD CONDITIONS IS TO BE PROMPTLY COMMUNICATED TO ARCHITECT FOR CLARIFICATION
  7. ALL DOORS TO BE INSTALLED WITH HINGE SIDE 4' FROM NEAREST INSIDE CORNER, UNLESS OTHERWISE NOTED
  8. PROVIDE BLOCKING AS REQUIRED FOR ACCESSORIES, CABINETS, SHELVES, ETC.
  9. PROVIDE FIRE EXTINGUISHERS TOPPING AS REQ. AT PENETRATIONS IN RATED WALLS/CEILING. TYP. REFER TO CODE PLAN FOR EXTENT OF RATED ENCLOSURES AND FIRE SMOKEPROOFING
  10. PROVIDE LOW PRESSURE SPRAY FOAM INSULATION AROUND ALL DOORS, WINDOWS, ETC., WHERE NECESSARY IN EXTERIOR WALLS TO MEET AIR INFILTRATION REQUIREMENTS. SEE SPECIFICATIONS
  11. PROVIDE SEALANT AS REQUIRED AT TRIM, WINDOWS, ETC. TYP.
  12. ALL EXTERIOR CONCRETE/PADA SHALL FITCH AWAY FROM BUILDING 1/4" PER FT. UNLESS OTHERWISE NOTED
  13. ALL NOTARY ARCHITECT IMMEDIATELY REGARDING ANY QUESTIONS/CLARIFICATIONS REGARDING NOTATIONS, DETAILS, ETC. PRIOR TO INSTALLATION
  14. RADON MITIGATIONS IS DIAGNOSTIC ONLY. CONTRACTOR TO PROVIDE SYSTEM ON A DESIGN-BUILD BASIS
  15. NOT USED
  16. SECURITY GATE BASED ON CORNELL VISION GLIDE "STRAIGHT" MODEL ISO-30. CLEAR ANODIZED 12" LINK SIDE FLOODING GRILLE W/ POCNET DOOR AND HEAD TRACK. BRONZE/BLACK LOCKING CYLINDER ONE SIDE
  17. MANUALLY OPERABLE PARTITION BASED ON MODERNFOLD, ACQUISIT-SEAL ENCORE. SEE SPECIFICATIONS. SEE ALSO ALTERNATE #3

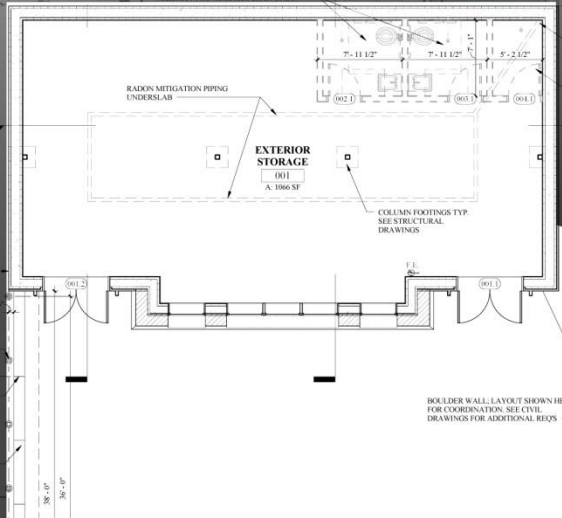
PLAN LEGEND:

STRUCTURAL GRIDLINE

NEW DOOR AND FRAME

PLAN ORIENTATION

PLAN NORTH



# Barrington New Hampshire New Town Hall

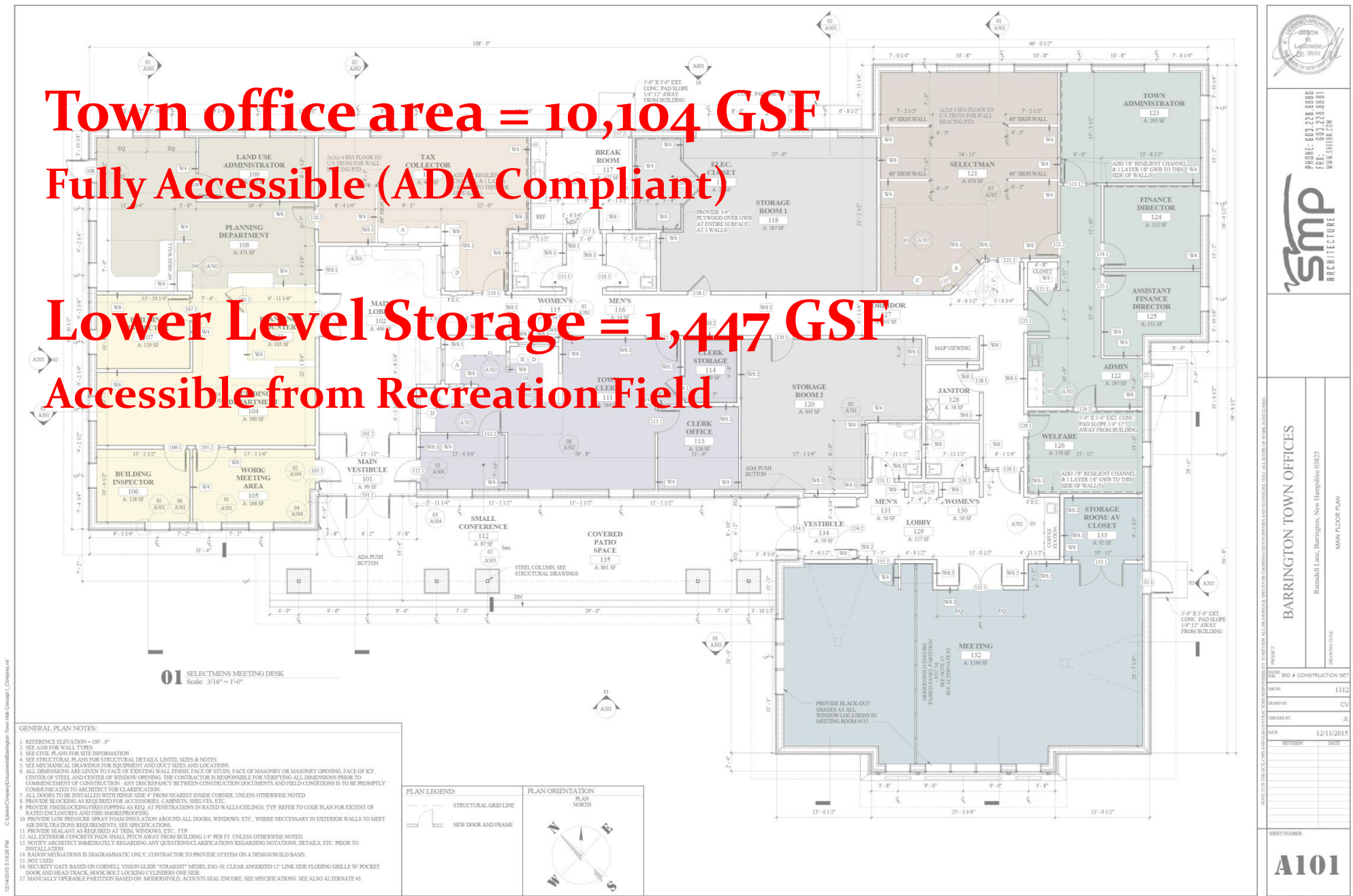


**Town office area = 10,104 GSF**

**Fully Accessible (ADA Compliant)**

**Lower Level Storage = 1,447 GSF**

**Accessible from Recreation Field**



**Barrington New Hampshire  
New Town Hall**

**smp**  
ARCHITECTURE

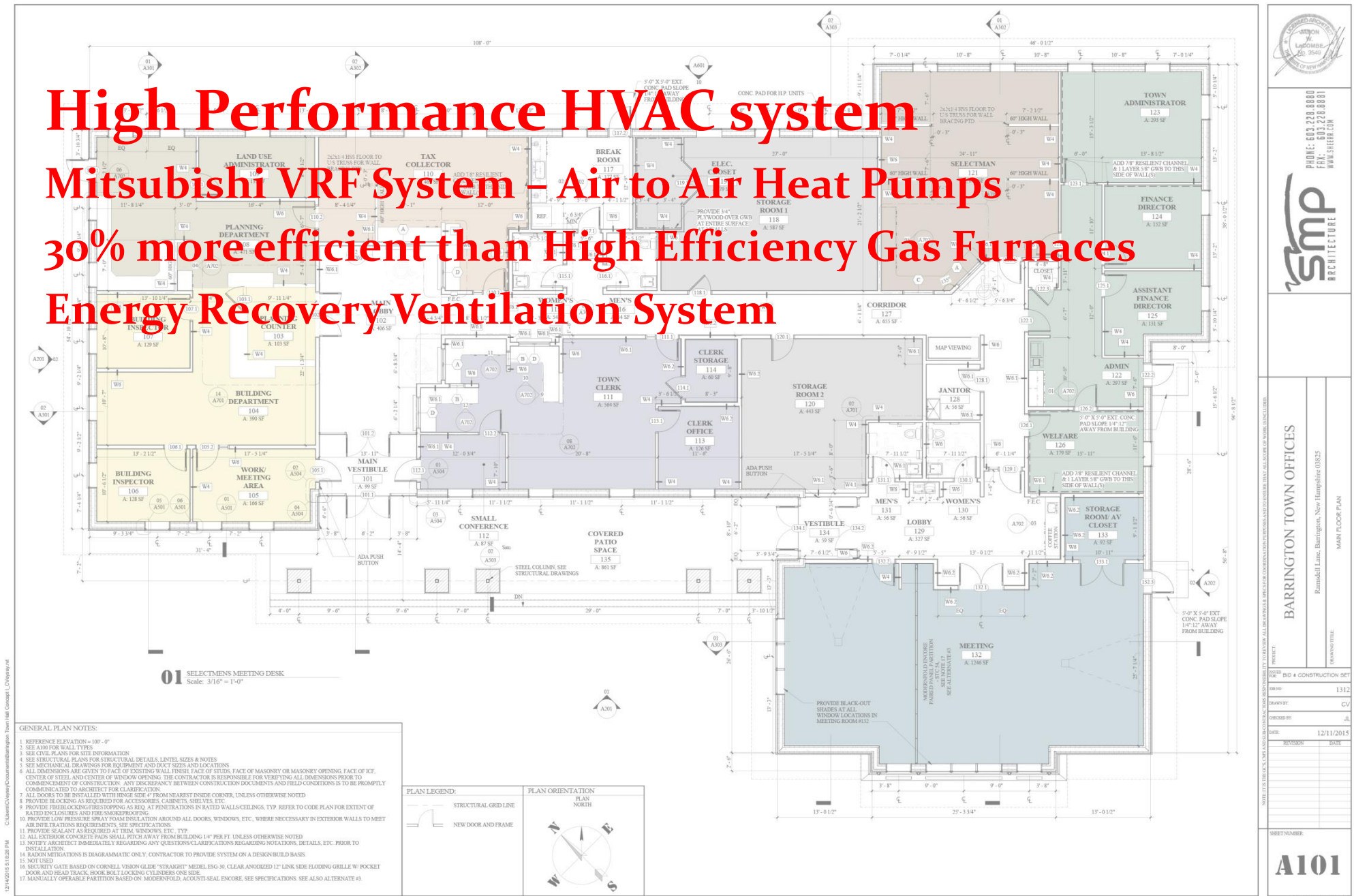


# High Performance HVAC system

## Mitsubishi VRF System – Air to Air Heat Pumps

### 30% more efficient than High Efficiency Gas Furnaces

### Energy Recovery Ventilation System

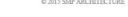


Barrington New Hampshire  
New Town Hall

12/14/2015 5:16:26 PM C:\Users\CVevey\Documents\Barrington Town Hall Concept I\_CVevey.mxd

GENERAL PLAN NOTES:

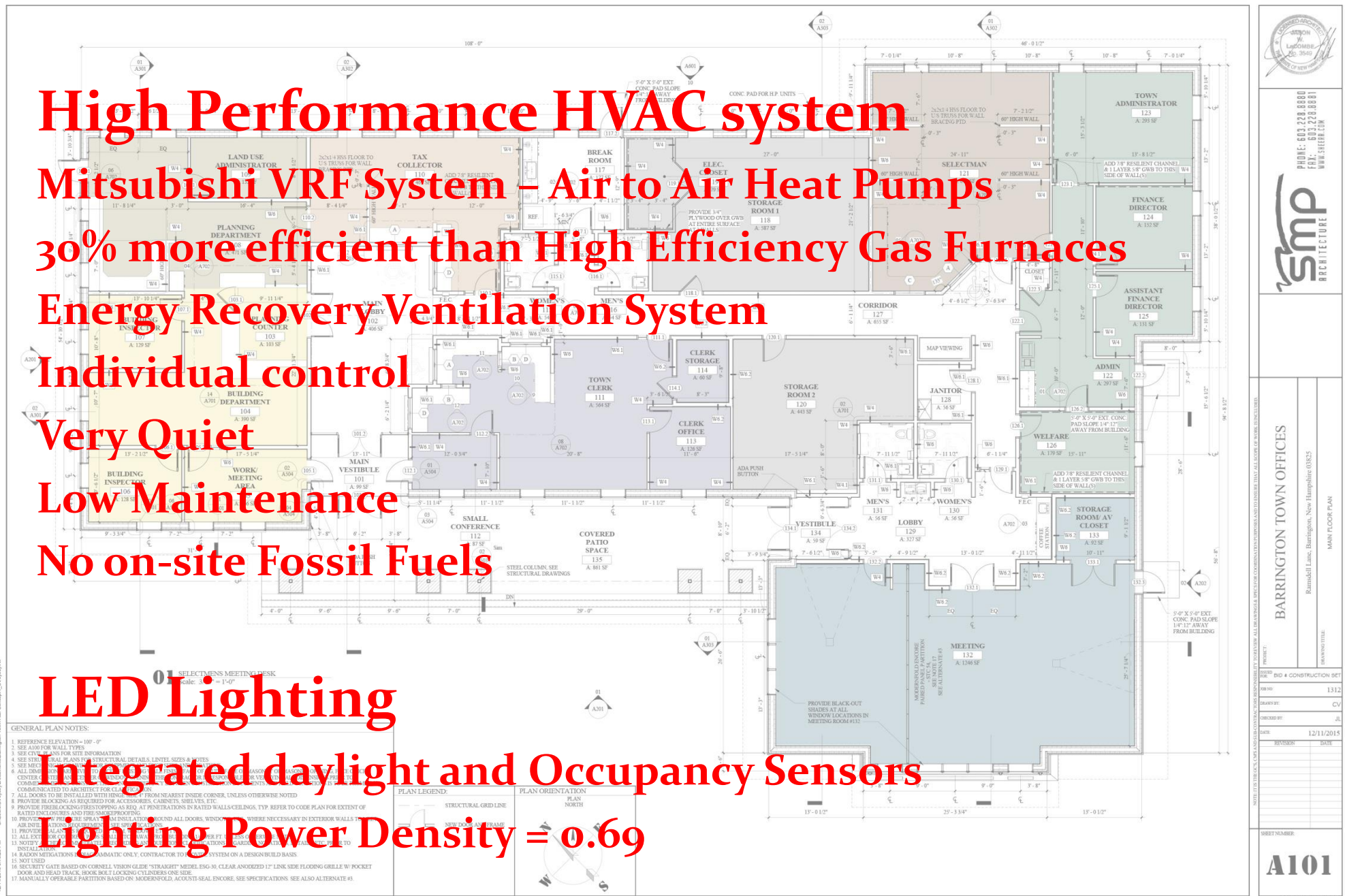
1. REFERENCE ELEVATION = 100'-0"
2. SEE ALSO FOR WALL TYPES
3. SEE CIVIL PLANS FOR SITE INFORMATION
4. SEE STRUCTURAL PLANS FOR STRUCTURAL DETAILS, LINTEL SIZES & NOTES
5. SEE MECHANICAL DRAWINGS FOR EQUIPMENT AND DUCT SIZES AND LOCATIONS
6. ALL DIMENSIONS ARE GIVEN TO FACE OF EXISTING WALL, FINISH FACE OF STUDS, FACE OF MASONRY OR MASONRY OPENING, FACE OF FLOOR, CENTER OF STEEL, AND CENTER OF WINDOW OPENING. THE CONTRACTOR IS RESPONSIBLE FOR VERIFYING ALL DIMENSIONS PRIOR TO CONSTRUCTION. ANY DISCREPANCY BETWEEN CONTRACT DOCUMENTS AND FIELD CONDITIONS IS TO BE IMMEDIATELY COMMUNICATED TO ARCHITECT FOR CLARIFICATION
7. ALL DOORTHRESHS TO BE 2" MIN. WITH FINISH SIDE OF - FROM NEAREST INSIDE CORNER, UNLESS OTHERWISE NOTED
8. PROVIDE BLOCKING AS REQUIRED FOR ACCESSORIES, CABINETS, SHELVES, ETC.
9. PROVIDE BLOCKING AS REQUIRED FOR ALL EXTERIOR WALLS AND PARTITIONS IN RATED WALLS/CEILINGS. TYPE REFER TO CODE PLAN FOR EXTENT OF RATED ENCLOSURES AND FIRE-SMOKEPROOFING
10. PROVIDE MINIMUM PRESSURE RATED PROTECTION AT ALL DOORS, WINDOWS, ETC., WHERE NECESSARY IN EXTERIOR WALLS TO MEET AIR INTRUSION REQUIREMENTS, SEE SPECIFICATIONS
11. PROVIDE SEALANT AS REQUIRED AT TRIM, WINDOWS, ETC., TYPE \_\_\_\_\_
12. PROVIDE MINIMUM 1/4" AIR GAP AT ALL WALLS, SILL, ETC. FROM ALL BUILDING 1/4" PER FT. UNLESS OTHERWISE NOTED
13. NOTIFY ARCHITECT IMMEDIATELY REGARDING ANY QUESTIONS/CLARIFICATIONS REGARDING NOTATIONS, DETAILS, ETC. PRIOR TO CONSTRUCTION
14. RADIUM MITIGATIONS IS DIAGRAMATIC ONLY. CONTRACTOR TO PROVIDE SYSTEM ON A DESIGN BUILD BASIS
15. NOT USED
16. SECURITY GATE BASED ON CORNELL VISION GLIDE "KRAKMIT" METAL, 30" CLEAR ANCHORED 17" LINK SEE FLOORING GRILLE W/ POCKET FOR REMOVAL AND RE-INSTALLATION LOCKING AT FRONT SIDE
17. MANUALLY OPERABLE PARTITION BASED ON MODERNFOLD, FINISH-PAINT ENCORE, SEE SPECIFICATIONS. SEE ALSO ALTERNATE #1





**High Performance HVAC system**  
**Mitsubishi VRF System – Air to Air Heat Pumps**  
**30% more efficient than High Efficiency Gas Furnaces**  
**Energy Recovery Ventilation System**  
**Individual control**  
**Very Quiet**  
**Low Maintenance**  
**No on-site Fossil Fuels**

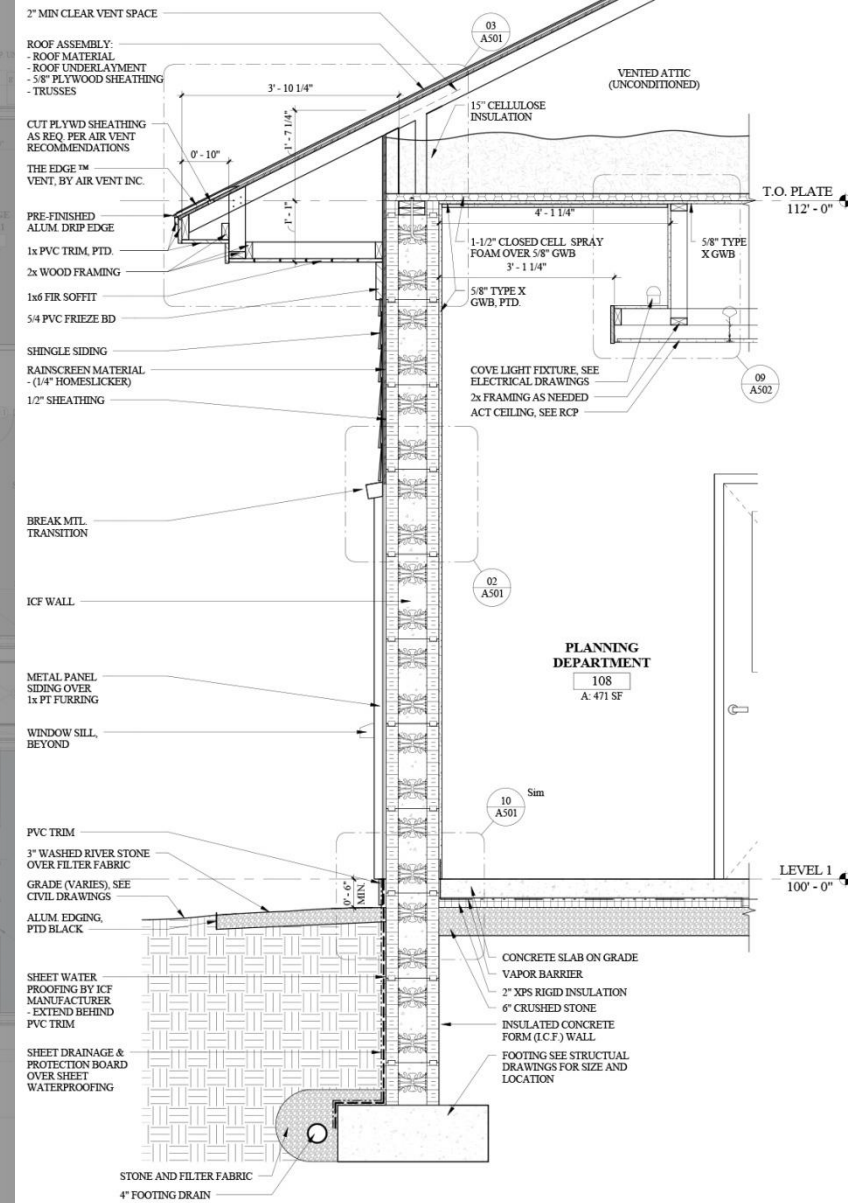
**LED Lighting**  
**Integrated daylight and Occupancy Sensors**  
**Lighting Power Density = 0.69**



**Barrington New Hampshire**  
**New Town Hall**



# Building Envelope: Exterior Walls = R24 Insulating Concrete Forms Performance = R40



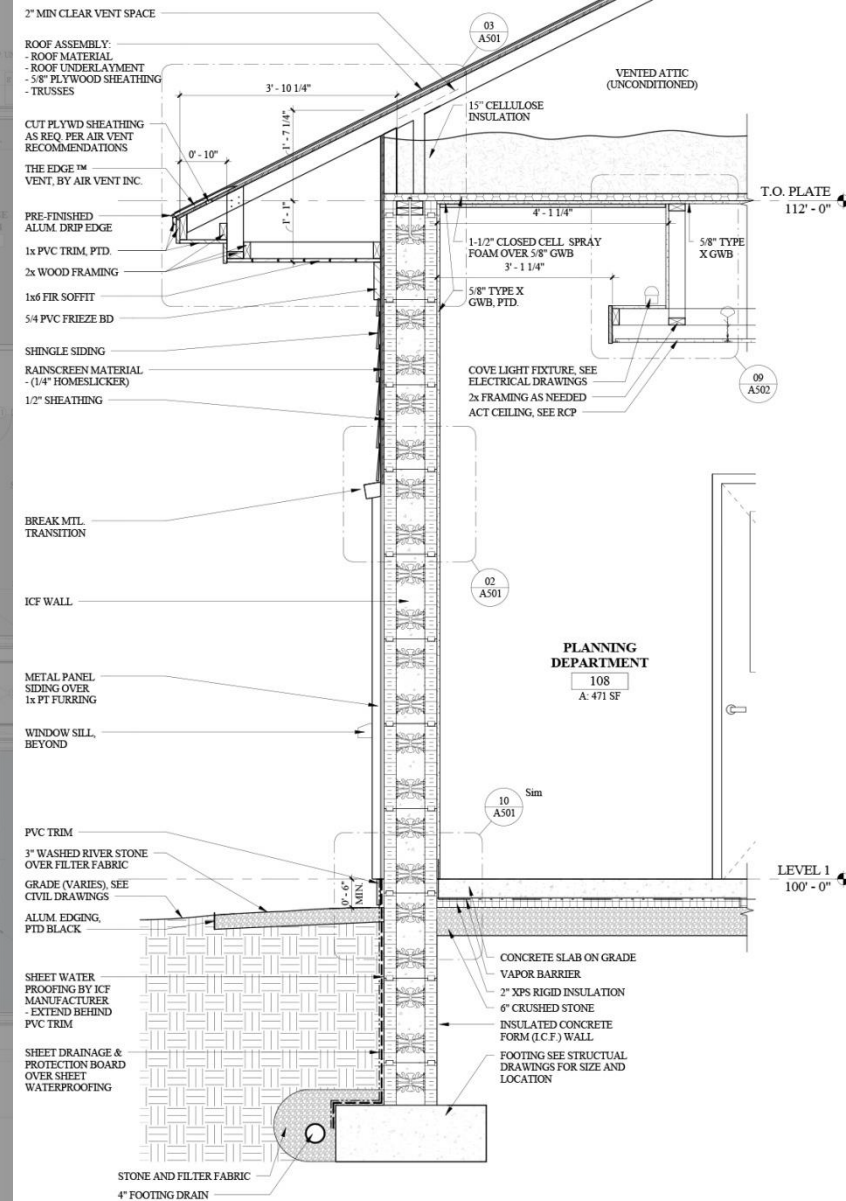
**01** TYPICAL EXTERIOR WALL SECTION - WITH TYP. NOTES  
Scale: 3/4" = 1'-0"

Barrington New Hampshire  
New Town Hall



# Building Envelope: Exterior Walls = R24 Insulating Concrete Forms Performance = R40

Attic Insulation = R62  
Underslab Insulation = R10



**01** TYPICAL EXTERIOR WALL SECTION - WITH TYP. NOTES  
Scale: 3/4\" = 1'-0"

Barrington New Hampshire  
New Town Hall

**smp**  
ARCHITECTURE

**Building Envelope:**

**Exterior Walls = R24**

**Insulating Concrete Forms**

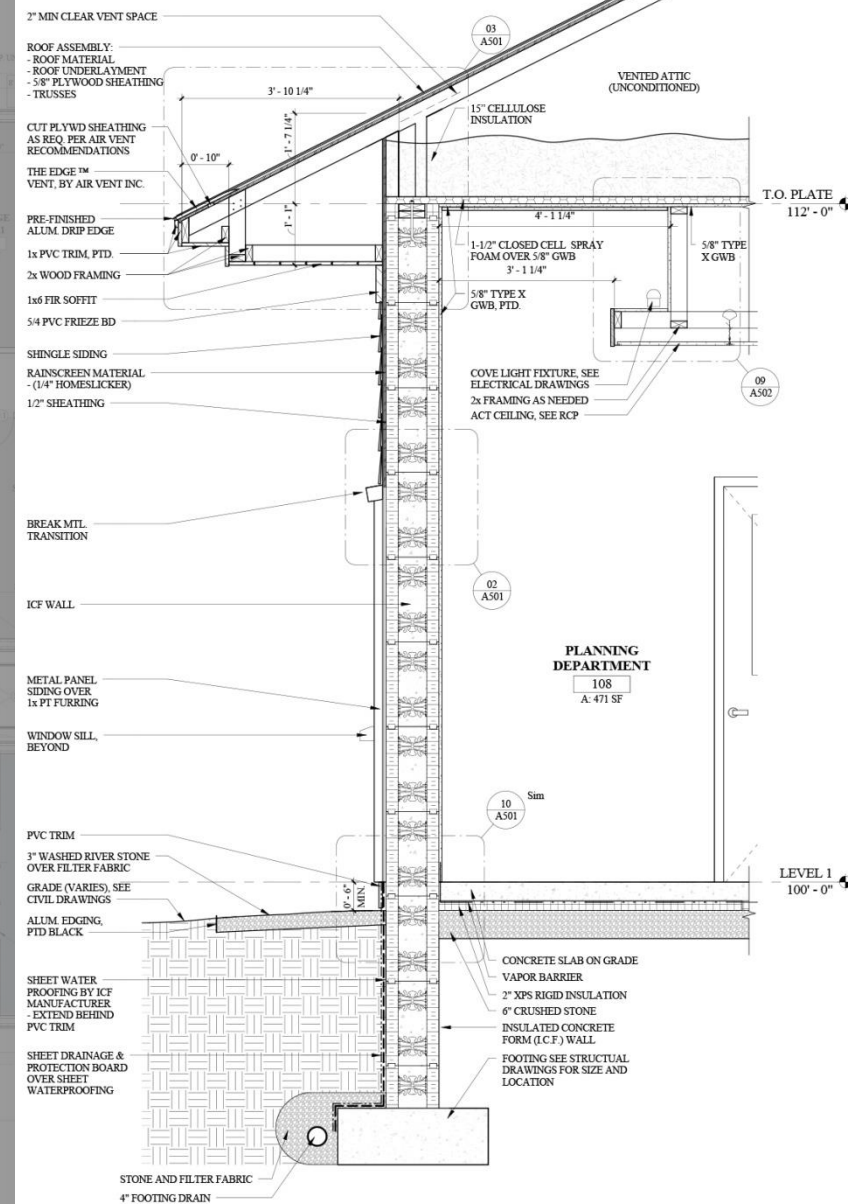
**Performance = R40**

**Attic Insulation = R62**

**Underslab Insulation = R10**

**All fiberglass Windows**

**Heavy Duty aluminum Entry System**



**01** TYPICAL EXTERIOR WALL SECTION - WITH TYP. NOTES  
Scale: 3/4" = 1'-0"

**Barrington New Hampshire**  
**New Town Hall**

**smp**  
ARCHITECTURE



**Building Envelope:**

**Exterior Walls = R24**

**Insulating Concrete Forms**

**Performance = R40**

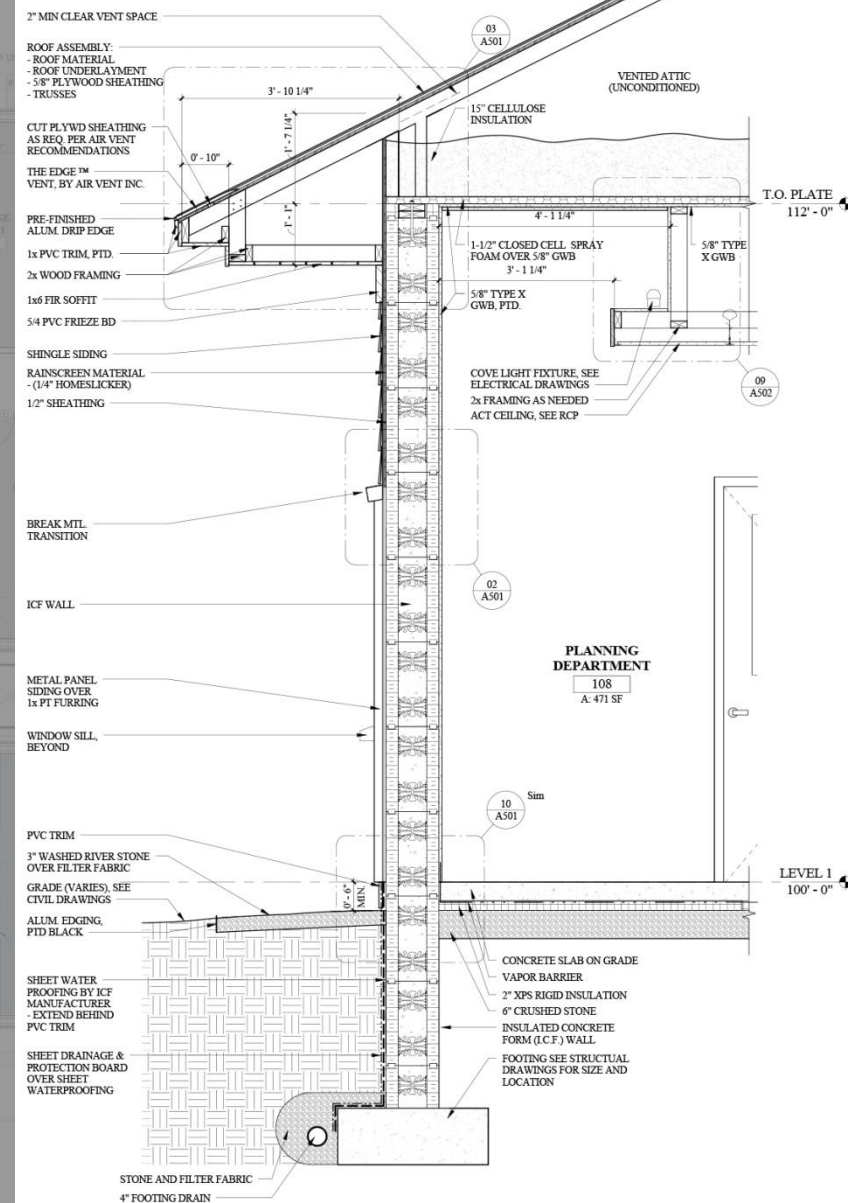
**Attic Insulation = R62**

**Underslab Insulation = R10**

**All fiberglass Windows**

**Heavy Duty aluminum Entry System**

**Air leakage max. = 0.2 ACH**



**01** TYPICAL EXTERIOR WALL SECTION - WITH TYP. NOTES  
Scale: 3/4" = 1'-0"

**Barrington New Hampshire  
New Town Hall**

**smp**  
ARCHITECTURE

# Equalizes building energy use



# Energy Use Intensity (EUI)

Measure of kBtu/sf/year

## Typical Office Building

100.0 kBtu/sf/yr

12/16/2016 11:10:00 AM C:\Users\New Hampshire\Documents\Barrington New Hampshire\Barrington New Hampshire.dwg

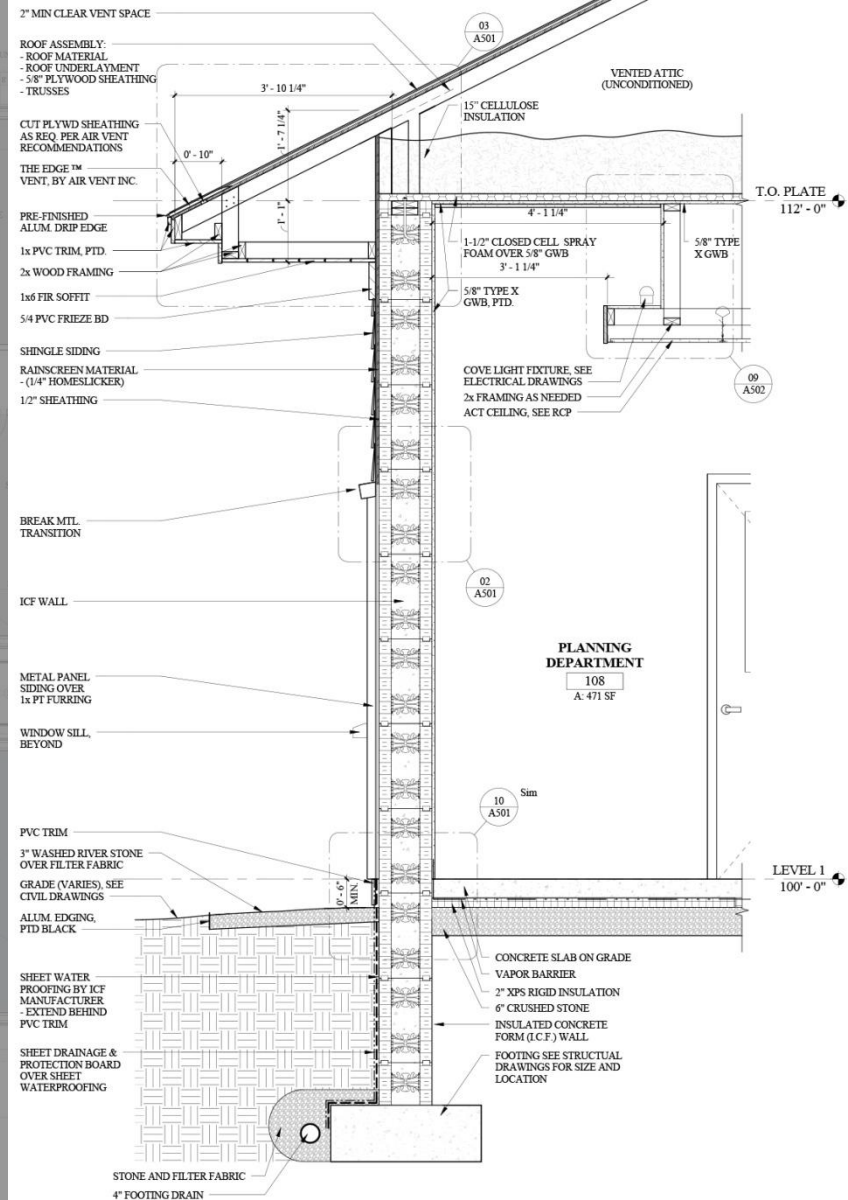
### GENERAL PLAN NOTES:

1. REFER TO ELEVATION - 100' - 0"
2. SEE ALSO FOR WALL TYPES
3. SEE CIVIL PLANS FOR SITE INFORMATION
4. SEE STRUCTURAL PLANS FOR STRUCTURAL DETAILS, UNITS, SIZES & NOTES
5. SEE MECHANICAL DRAWINGS FOR EQUIPMENT AND DUCT SIZES AND LOCATIONS
6. ALL DIMENSIONS ARE GIVEN TO FACE OF EXISTING WALL, FINISH FACE OF STUDY, FACE OF MASONRY OR MASONRY OPENING, FACE OF ICE, CENTER OF STEEL AND CENTER OF WINDOW OPENING. THE CONTRACTOR IS RESPONSIBLE FOR VERIFYING ALL DIMENSIONS PRIOR TO COMMENCEMENT OF CONSTRUCTION. ANY DISCREPANCY BETWEEN CONSTRUCTION DOCUMENTS AND FIELD CONDITIONS IS TO BE IMMEDIATELY COMMUNICATED TO ARCHITECT FOR CLARIFICATION
7. ALL DOORS TO BE CALLED WITH FINISH OR 4" FRAME ARE SET INSIDE CORNER, UNLESS OTHERWISE NOTED
8. PROVIDE BRACKING AS REQUIRED FOR ACCESSORIES, CABINETS, SHELVES, ETC.
9. PROVIDE EXTERIOR WALLS STOPPING AS REQ. AT PENETRATIONS IN RATED WALLS CEILING, TOP REFER TO CODE PLAN FOR EXTENT OF RATED ENCLOSURES AND FIRE-SMOKEPROOFING
10. PROVIDE LOW PRESSURE SPRAY FOAM INSULATION AROUND ALL DOORS, WINDOWS, ETC., WHERE NECESSARY IN EXTERIOR WALLS TO MEET AIR INFILTRATION REQUIREMENTS. SEE SPECIFICATIONS
11. PROVIDE SEALANT AS REQUIRED AT TRIM, WINDOWS, ETC. TYP.
12. ALL EXTERIOR CONCRETE SLAB SHALL NOTCH AWAY FROM BUILDING 1" PER FT. UNLESS OTHERWISE NOTED
13. NOTIFY ARCHITECT IMMEDIATELY REGARDING ANY QUESTIONS/CLARIFICATIONS REGARDING NOTATIONS, DETAILS, ETC. PRIOR TO INSTALLATION
14. RADIANT MITIGATIONS IS DIAGNOSTIC ONLY. CONTRACTOR TO PROVIDE SYSTEM ON A DESIGN-BUILD BASIS
15. NOT USED
16. SECURITY GATE BASED ON CORNELL VISION GLASS "STRASPORT" MODEL ESQ-90, CLEAR ANODIZED 1" LINE SIDE FLOODING GRILLE W/ POKET DOOR AND HEAD TRACK, TRACK MOUNT LOKING CLOSURE ONE SIDE
17. MANUALLY OPERABLE PARTITION BASED ON: MODERNVOLD, ACQUITY-SEAL ENCODE, SEE SPECIFICATIONS. SEE ALSO ALTERNATE 45

### PLAN LEGEND:

- STRUCTURAL GRID LINE
- NEW DOOR AND FRAME

### PLAN ORIENTATION



**01** TYPICAL EXTERIOR WALL SECTION - WITH TYP. NOTES  
Scale: 3/4" = 1'-0"

Barrington New Hampshire  
New Town Hall

**smp**  
ARCHITECTURE



# Energy Use Intensity (EUI)

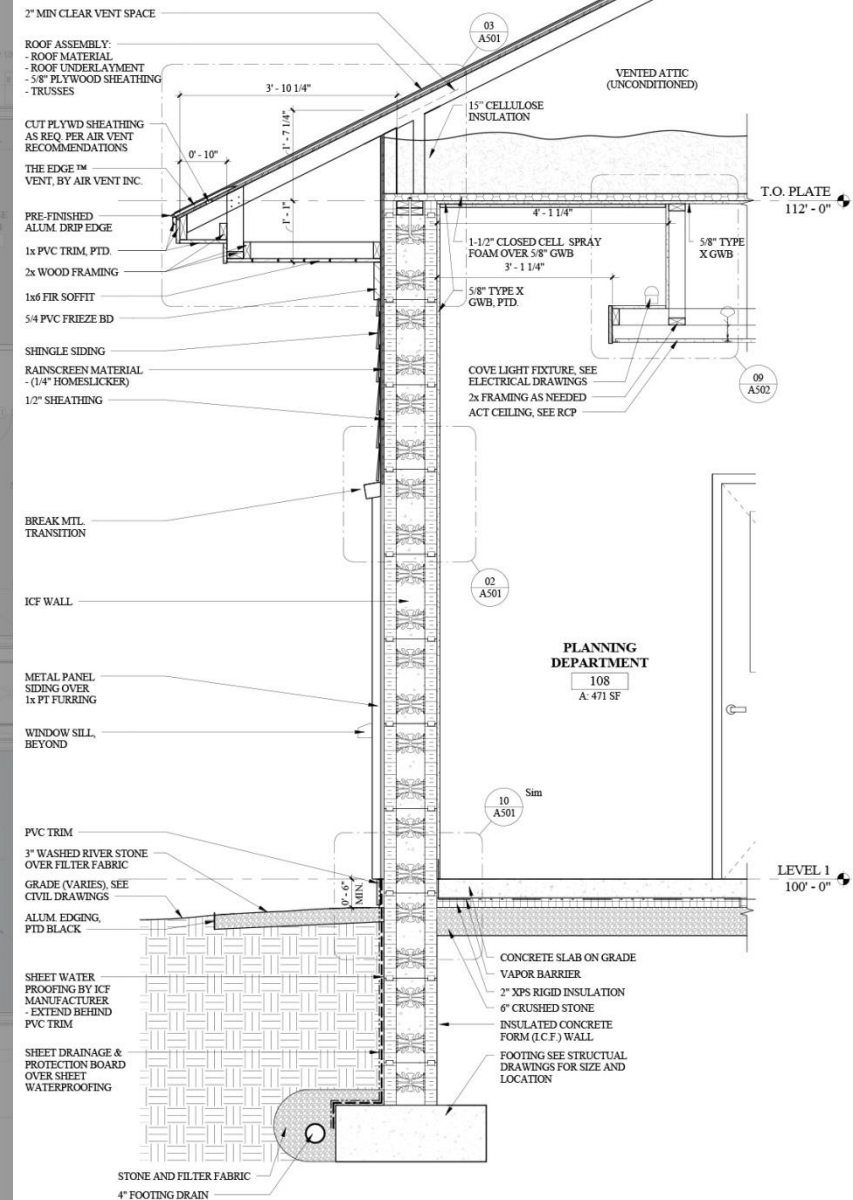
Measure of kBtu/sf/year

## Typical Office Building

100.0 kBtu/sf/yr

## Architecture 2030 Challenge

Goal = 30.0 kBtu/sf/yr



**01** TYPICAL EXTERIOR WALL SECTION - WITH TYP. NOTES  
Scale: 3/4" = 1'-0"

Barrington New Hampshire  
New Town Hall

# Energy Use Intensity (EUI)

Measure of kBtu/sf/year

## Typical Office Building

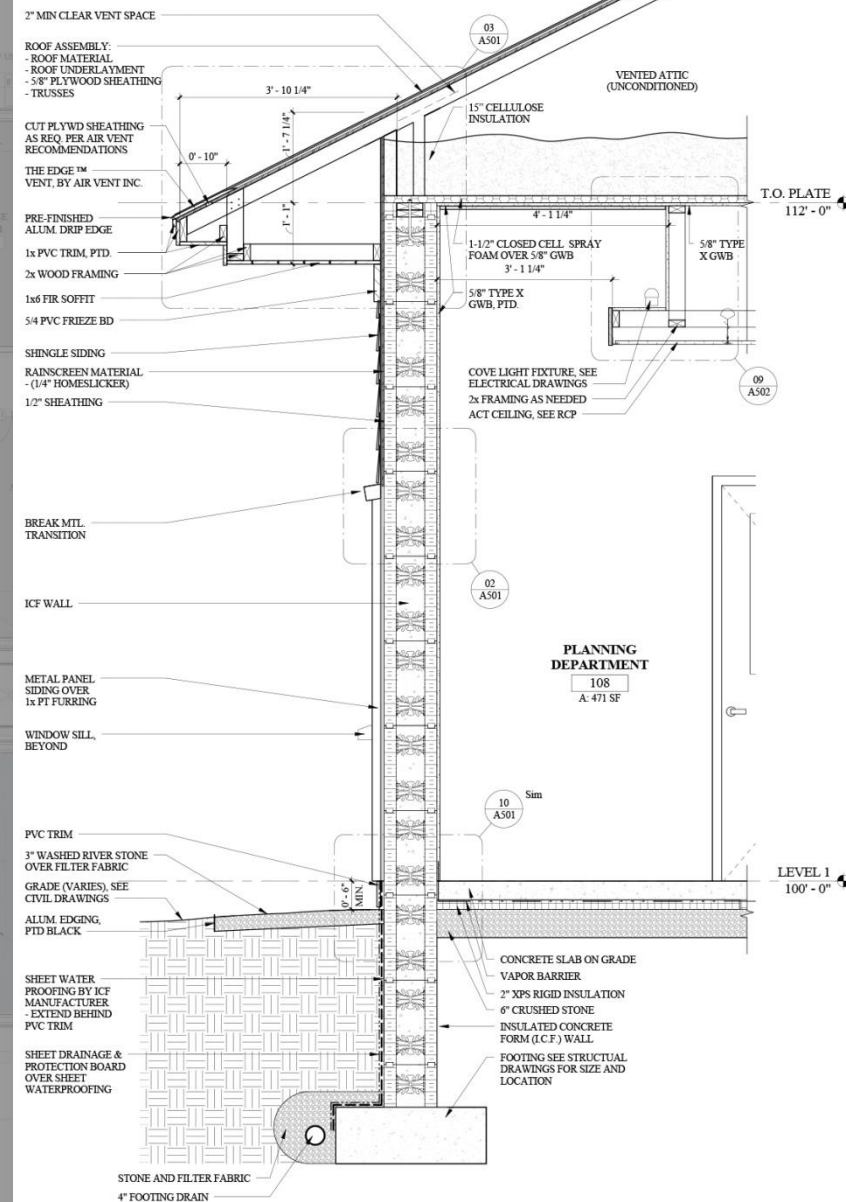
100.0 kBtu/sf/yr

## Architecture 2030 Challenge

Goal = 30.0 kBtu/sf/yr

## Your Building Estimate

21.8 kBtu/sf/yr



**01** TYPICAL EXTERIOR WALL SECTION - WITH TYP. NOTES  
Scale: 3/4" = 1'-0"

Barrington New Hampshire  
New Town Hall

**smp**  
ARCHITECTURE





Barrington New Hampshire  
New Town Hall





Barrington New Hampshire  
New Town Hall





Barrington New Hampshire  
New Town Hall



**Durable, low maintenance materials**

**Properly sized to meet the needs now and in the future**



**Barrington New Hampshire**  
**New Town Hall**



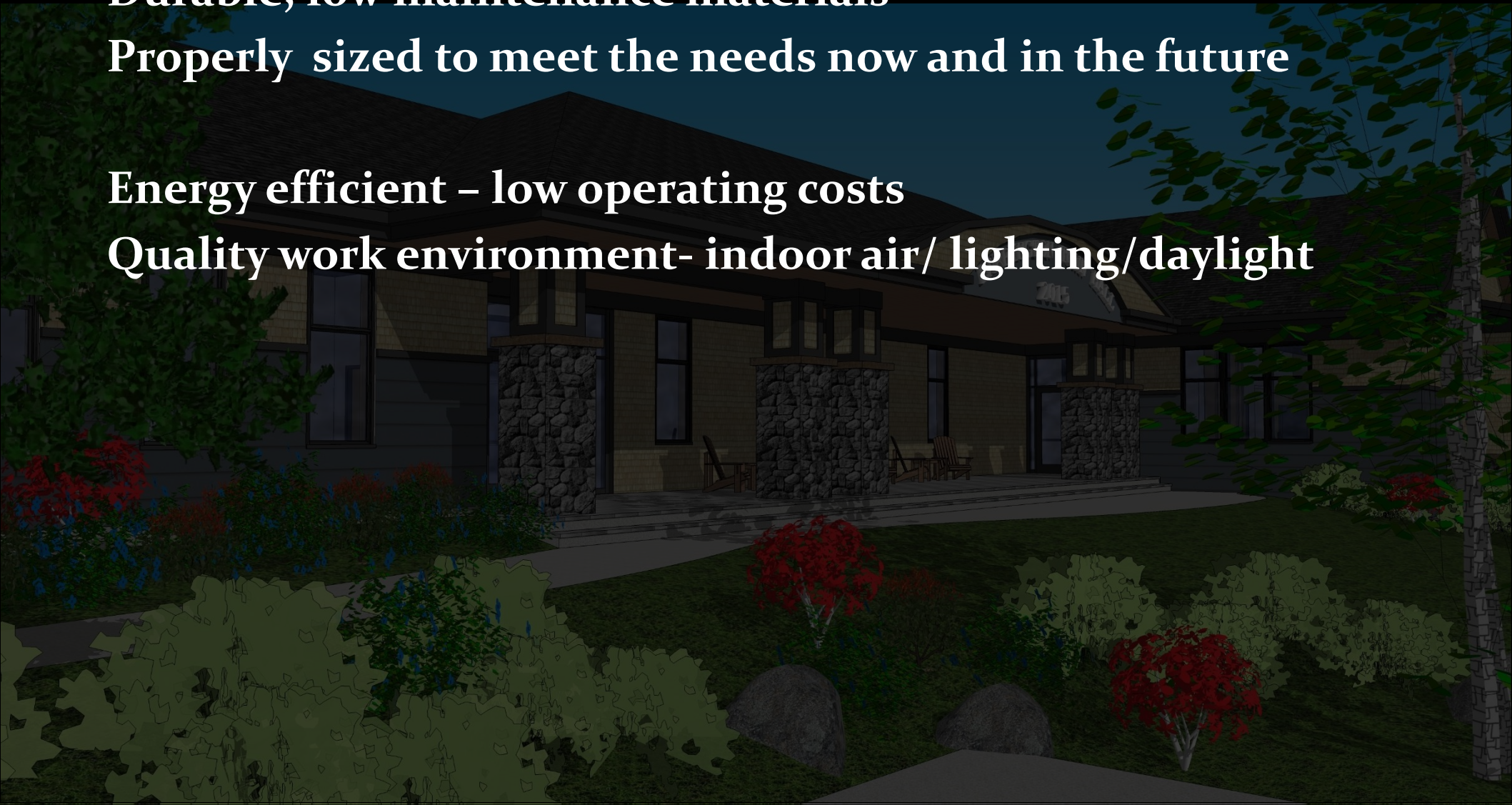


**Durable, low maintenance materials**

**Properly sized to meet the needs now and in the future**

**Energy efficient – low operating costs**

**Quality work environment- indoor air/ lighting/daylight**



**Barrington New Hampshire**  
**New Town Hall**





**Durable, low maintenance materials**

**Properly sized to meet the needs now and in the future**

**Energy efficient – low operating costs**

**Quality work environment- indoor air/ lighting/daylight**

**Reinforces the Town Campus with Recreation**

**Accommodates the future Library**

**Barrington New Hampshire**  
**New Town Hall**







**Durable, low maintenance materials**

**Properly sized to meet the needs now and in the future**

**Energy efficient – low operating costs**

**Quality work environment- indoor air/ lighting/daylight**

**Reinforces the Town Campus with Recreation**

**Accommodates the future Library**

**A building that is built to last – Value to the Town**

**An Investment you can be proud of**

**Barrington New Hampshire**  
**New Town Hall**





An architectural rendering of the Barrington New Hampshire New Town Hall at dusk. The building is a two-story structure with a dark roof, stone pillars, and large windows. A sign above the entrance reads "BARRINGTON TOWN HALL" and "2015". The foreground features a lawn with various shrubs, including red and green ones, and large rocks. The sky is a deep blue.

# Thank-you

Barrington New Hampshire  
New Town Hall

