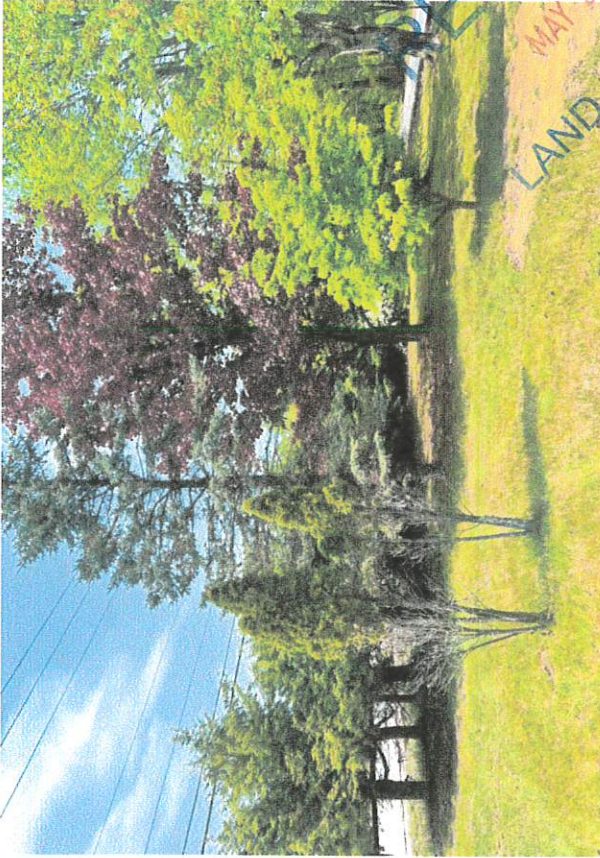


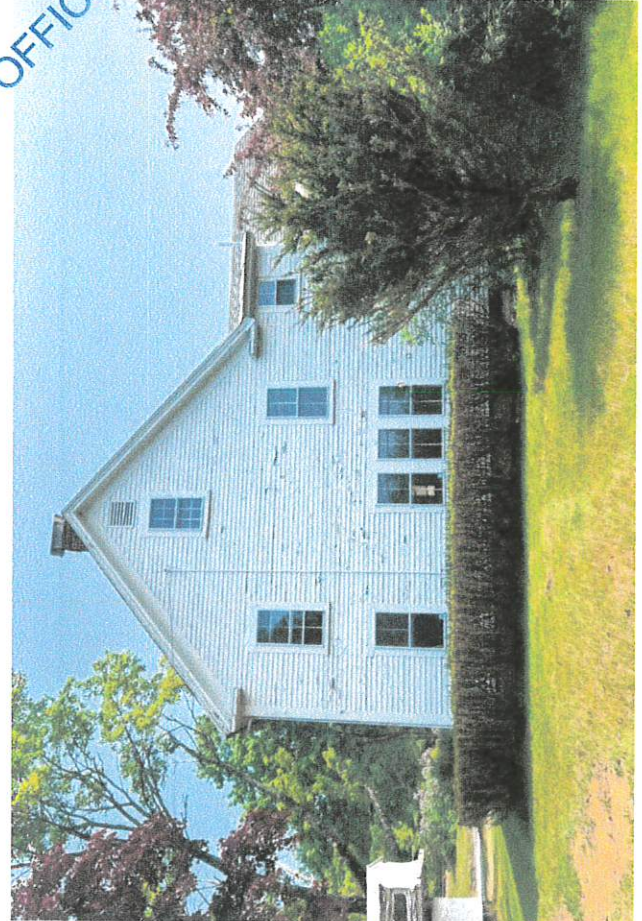
Existing Conditions Photo Exhibit



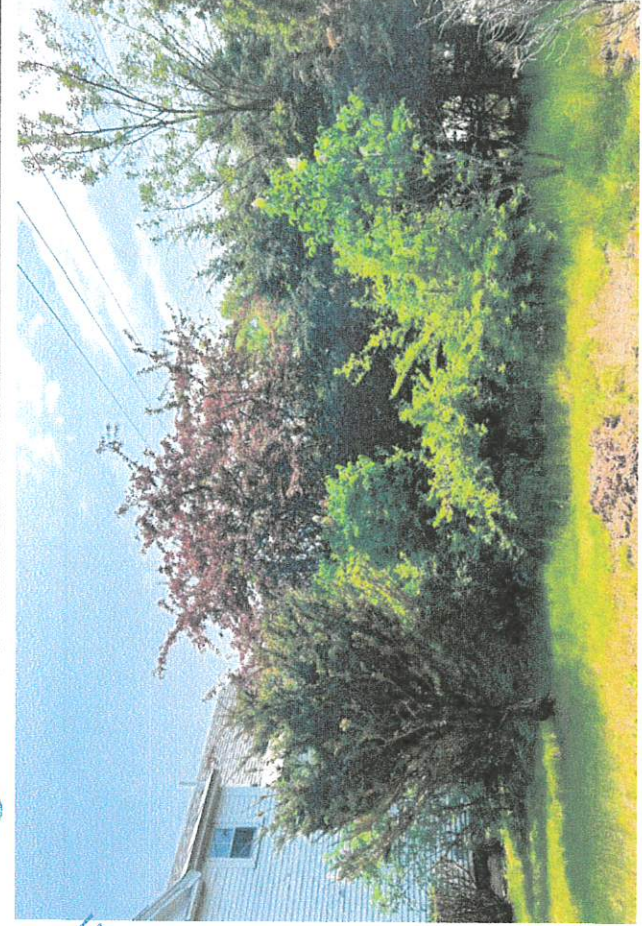
1. Looking North towards Rte 125 + Winkley Pond Rd Int.



2. North Facade of Existing House - Winkley Pond Rd



3. North Facade of House



4. North Facade of House - Rte 125

RECEIVED  
MAY 25 2023  
LAND USE OFFICE



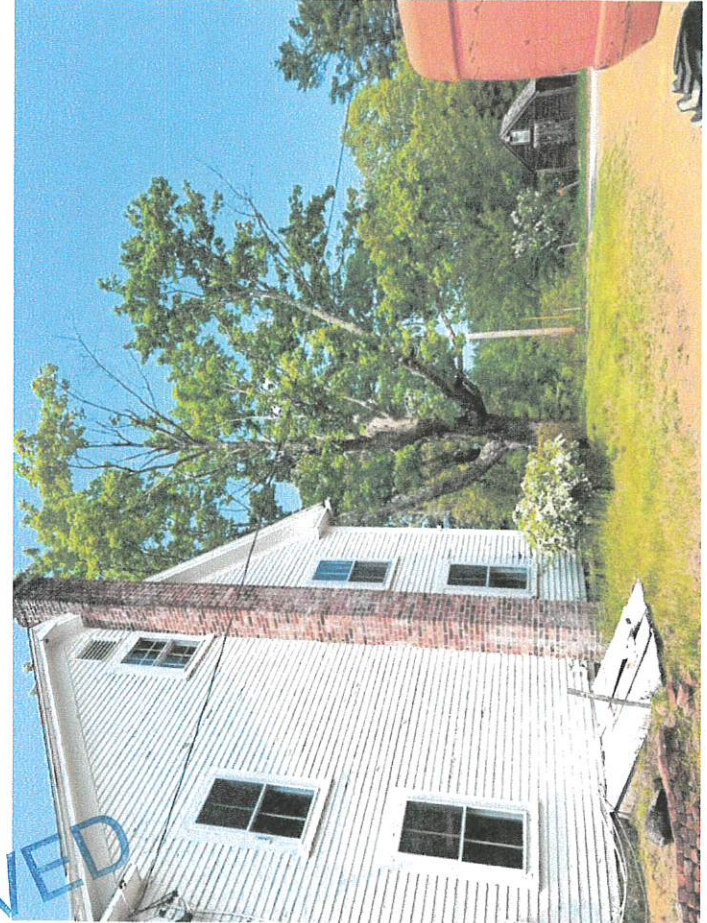
5. From Winkley Pond Rd looking North; [6. 7. NA]



8. East Facade of House

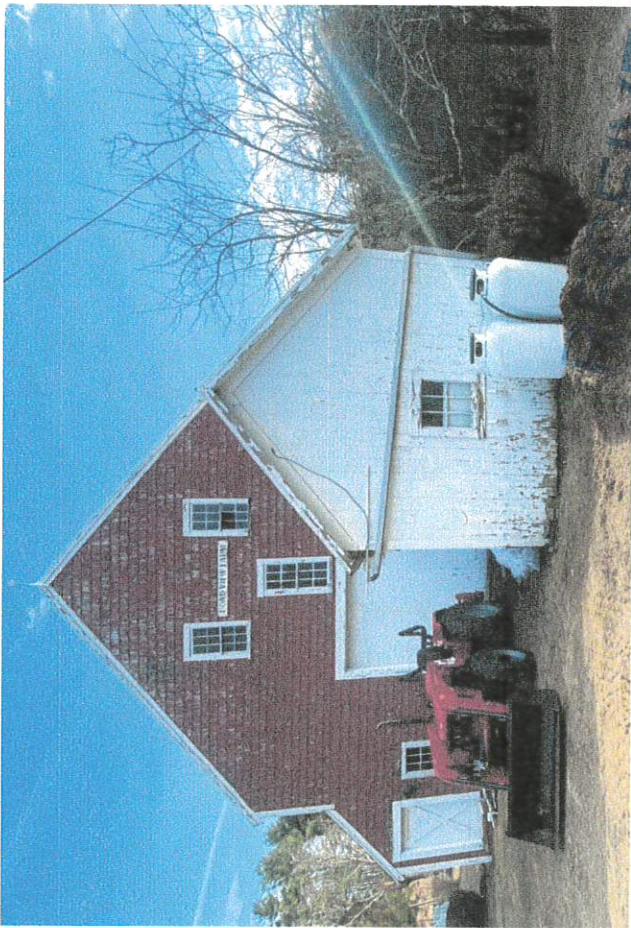


9. South Facade of House

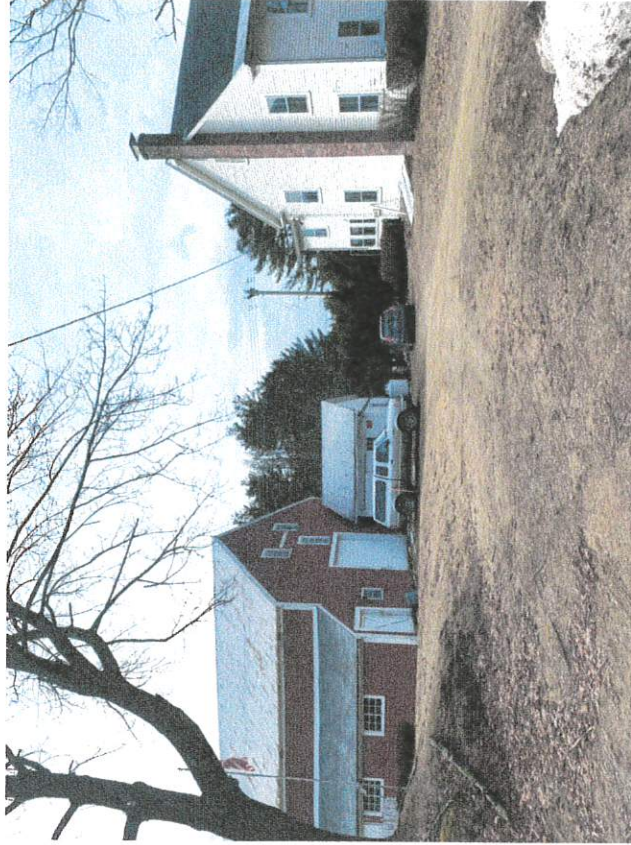


10. South Facade of House - Winkley Pond Rd

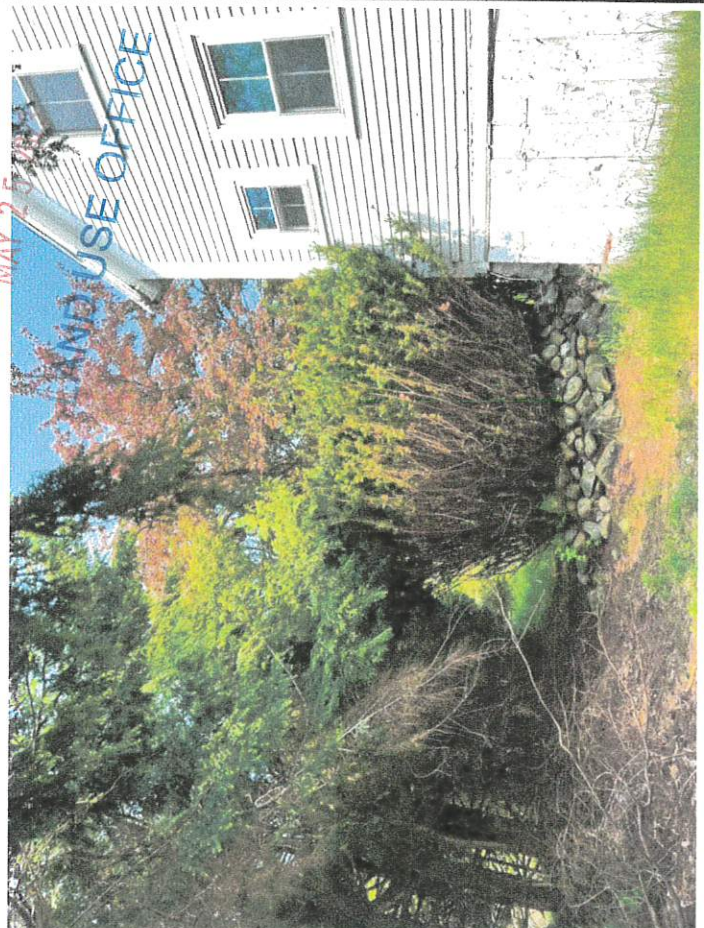
RECEIVED  
MAY 25 2017  
LAND USE OFFICE



11. Looking South from House to Barn & Shed



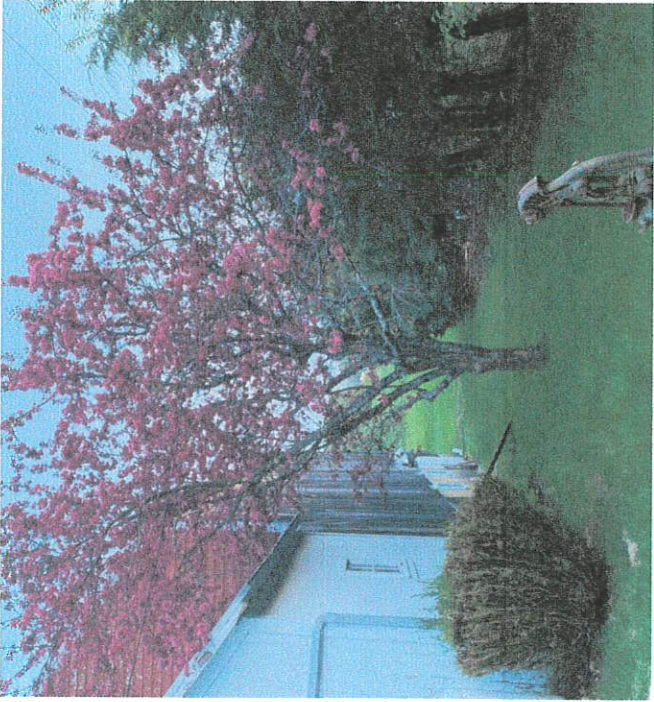
12. Photo from Winkley Pond Rd looking West; Barn, Shed, House.



13. West Facade of House



14. West Facade of House



15. Facing south showing western edge of property along Rte 125



Additional image of adjacent Barn for context



Image of open field (Rte 125 on Right side, Winkley Pond on Left)

RECEIVED  
MAY 2 2013  
OFFICE