

TABLE OF CONTENTS:

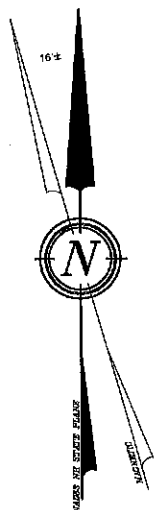
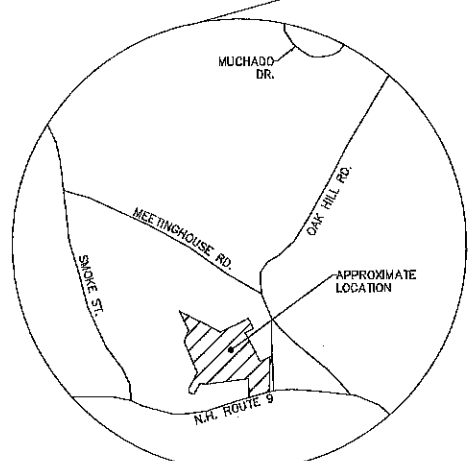
- SHEET 1 ~ NEIGHBORHOOD PLAN
- SHEET 2 ~ EXISTING CONDITIONS PLAN
- SHEET 3 ~ SITE SPECIFIC SOILS MAP OVERVIEW
- SHEET 4 ~ TEST PIT DATA
- SHEET 5 ~ SUBDIVISION PLAN*
- SHEET 6 ~ EASEMENT PLAN*
- SHEET 7 ~ TOPOGRAPHIC PLAN OVERVIEW
- SHEET 8 ~ OVERVIEW GRADING & DRAINAGE PLAN
- SHEET 9 ~ PLAN AND PROFILE 0+00 - 5+00
- SHEET 10 ~ PLAN AND PROFILE 5+50 - END
- SHEET 11 ~ PLAN AND PROFILE DRIVEWAY 25-1
- SHEET 12 ~ PLAN AND PROFILE DRIVEWAY 25-8
- SHEET 13 ~ PLAN AND PROFILE DRIVEWAY 25-9
- SHEET 14 ~ DETENTION POND #101
- SHEET 15 ~ EROSION & SEDIMENT CONTROL PLAN
- SHEET 16 ~ NHDOT ACCESS NH ROUTE 9 WESTERLY
- SHEET 17 ~ NHDOT ACCESS NH ROUTE 9 EASTERLY
- SHEET 18 ~ CROSS SECTIONS PRIMARY DRIVEWAY 0+00 - END
- SHEET 19 ~ E101-EROSION & SEDIMENT CONTROL DETAILS
- SHEET 20 ~ E102-EROSION & SEDIMENT CONTROL DETAILS
- SHEET 21 ~ C101-CONSTRUCTION DETAILS
- SHEET 22 ~ D101-DRAINAGE DETAILS

* INDICATES A PLAN IS TO BE RECORDED

NOTE:

BERRY SURVEYING & ENGINEERING HAS PREPARED AN INSPECTION & MAINTENANCE MANUAL AS PART OF THIS PROJECTS DOCUMENTATION. ALL USERS ARE BOUND TO THIS DOCUMENT AS PART OF THE APPROVAL OF THE PLANNING BOARD. COPIES OF THE YEARLY INSPECTIONS ARE TO BE DELIVERED TO THE TOWN OF BARRINGTON PLANNING DEPARTMENT.

LOCATION PLAN
BARRINGTON, NH
NOT TO SCALE



MAJOR SUBDIVISION FOR TSB CONSTRUCTION LLC NH ROUTE 9 / FRANKLIN PIERCE HIGHWAY BARRINGTON, NH TAX MAP 234, LOT 25-1

OWNER: TSB CONSTRUCTION LLC
44 MERRYFIELD LANE
HAMPSTEAD, NH 03826

SURVEYOR OF RECORD: KENNETH A. BERRY, PE, LLS
CPESC, CESSWI, CPSWQ
BERRY SURVEYING & ENGINEERING
335 SECOND CROWN POINT ROAD
BARRINGTON, NH 03825
(603) 332-2863

ENGINEER OF RECORD: KENNETH A. BERRY, PE, LLS
CPESC, CESSWI, CPSWQ
BERRY SURVEYING & ENGINEERING
335 SECOND CROWN POINT ROAD
BARRINGTON, NH 03825
(603) 332-2863

WETLAND SCIENTIST: DEIDRA BENJAMIN CWS
100 LEAVITT ROAD
PITTSFIELD, NH 03263
603-496-3307

SOIL SCIENTIST: JOHN P. HAYES III GSS
7 LIMESTONE WAY
NORTH HAMPTON, NH 03862
603-776-5825

VICINITY SKETCH
BARRINGTON, NH
SCALE: 1" = 300' ±



REQUIRED PERMITS:

- 1.) NHDES SUBDIVISION PERMIT: (PENDING)
- 2.) NHDOT DRIVEWAY PERMIT: (PENDING)
- 3.) EPA NOTICE OF INTENT / SWPPP: (PENDING)

GENERAL PLAN SET NOTES:

- 1.) 11x17" PLANS ARE HALF THE PUBLISHED SCALE.
- 2.) ALL PLANS ARE CONSIDERED TO BE NOT FOR CONSTRUCTION UNLESS THEY CONTAIN THE APPROVAL STAMP OF THE TOWN OF BARRINGTON.

WHETHER OR NOT OTHERWISE EXPRESSLY RECITED ON THIS SUBDIVISION PLAN, THE SUBDIVISION APPROVAL GRANTED IS CONDITIONED ON FAITHFUL AND DILIGENT ADHERENCE BY THE OWNER/SUBDIVIDER/DEVELOPER OF ALL TERMS, CONDITIONS, PROVISIONS AND SPECIFICATIONS OF THE TOWN OF BARRINGTON LAND SUBDIVISION REGULATIONS AS AMENDED OR AS MAY LATER BE AMENDED, IN EFFECT ON THE DATE OF APPROVAL, UNLESS OR EXCEPT INsofar AS EXPRESSLY WAIVED, IN ANY PARTICULAR, BELOW. NON - ADHERENCE MAY RESULT IN A REVOCATION OF APPROVAL. ANY VARIATION FROM THE APPROVED PLAN WILL REQUIRE A RESUBMISSION FOR SUBDIVISION APPROVAL.

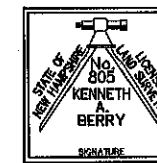
OWNER'S SIGNATURE _____

RECEIVED

OCT 12 2022

LAND USE OFFICE

FOR TOWN APPROVAL PURPOSES:
THE SUBDIVISION REGULATIONS OF THE TOWN OF BARRINGTON ARE A PART OF THIS PLAN, AND APPROVAL OF THIS PLAN IS CONTINGENT UPON COMPLETION OF ALL REQUIREMENTS OF SAID SUBDIVISION REGULATIONS, EXCEPTING ONLY MODIFICATIONS MADE IN WRITING BY THE BOARD AND ATTACHED HERETO.



REVISION	DATE	DESCRIPTION

SUBDIVISION
LAND OF
TSB CONSTRUCTION LLC
FRANKLIN PIERCE HIGHWAY / NH ROUTE 9
BARRINGTON, NH
TAX MAP 234, LOT 25-1

BERRY SURVEYING & ENGINEERING
335 SECOND CROWN POINT ROAD
BARRINGTON, NH 03825 (603)332-2863
SCALE : AS SHOWN
DATE : OCTOBER 12, 2022
FILE NO. : DB 2022 - 051



ABBREVIATION LEGEND:

BITUM.	BITUMINOUS
E.O.P.	EDGE OF PAVEMENT
B.C.C.	BITUMINOUS CONCRETE CURB
E.S.H.W.T.	ESTIMATED SEASONAL HIGH WATER TABLE
TYP.	TYPICAL
U.G.E.	UNDER GROUND ELECTRIC / UTILITY
U.D.	UNDER DRAIN
C.O.	CLEAN OUT
INV.	INVERT
ELEV.	ELEVATION
F.E.S.	FLARED END SECTION
HDPE	HIGH DENSITY POLYETHYLENE
RCP	REINFORCED CONCRETE PIPE
RECB	ROLLED EROSION CONTROL BLANKET
F.G.	FINISHED GRADE
E.G.	EXISTING GRADE
E.T.W.	EDGE OF TRAVELED WAY
T.B.R.	TO BE REMOVED
PL	PROPERTY LINE
EL	EASEMENT LINE
R.O.W.	RIGHT OF WAY
CL	CENTER LINE
CF	CUBIC FEET
P.C.	POINT OF CURVATURE
P.T.	POINT OF TANGENCY
P.V.C.	POINT OF VERTICAL CURVATURE
P.V.I.	POINT OF VERTICAL INTERSECTION
P.V.T.	POINT OF VERTICAL TANGENCY
EX.	EXISTING
PROP.	PROPOSED
R&R	REMOVE AND REPLACE
STA.	STATION
'/	FOOT / FOOT

SSL	~ SIZE SINGLE SOLID LINE (COLOR W=WHITE, Y=YELLOW)
DSL	~ SIZE DOUBLE SOLID LINE (COLOR W=WHITE, Y=YELLOW)
SSB	~ SIZE SINGLE SOLID W/ BROKEN LINE (COLOR W=WHITE, Y=YELLOW)
SBL	~ SIZE SINGLE BROKEN LINE (COLOR W=WHITE, Y=YELLOW)
DBL	~ SIZE DOUBLE BROKEN LINE (COLOR W=WHITE, Y=YELLOW)

ADJUTTERS WITHIN 200':

N/F PUBLIC SERVICE CO OF NH
P.O. BOX 270
HARTFORD, CT 06141-270
TAX MAP 234, LOT 83
S.C.R.D. BOOK 3863, PAGE 630

N/F JOANN HUBER & TIMOTHY CUNNINGHAM
14 SMOKE STREET
BARRINGTON, NH 03825
TAX MAP 234, LOT 24
S.C.R.D. BOOK 4690, PAGE 922

N/F MELISSA H & DANIEL M AYERS
NANCY J MARDEN
41 OAK HILL ROAD
BARRINGTON, NH 03825
TAX MAP 234, LOT 25
S.C.R.D. BOOK 4961, PAGE 638

N/F OAK HILL REALTY LLC
1765 HAN ROAD
BARRINGTON, NH 03825
TAX MAP 234, LOT 26-2
S.C.R.D. BOOK 4726, PAGE 341

N/F BRIAN M HUBNEY & SUSAN E FRATON
13 MEETINGHOUSE ROAD
BARRINGTON, NH 03825
TAX MAP 234, LOT 25-3
S.C.R.D. BOOK 4947, PAGE 12

N/F WILLIAM & HEIDI VOLTZ
P.O. BOX 539
BARRINGTON, NH 03825
TAX MAP 234, LOT 25-4
S.C.R.D. BOOK 4940, PAGE 806

ADJUTTERS WITHIN 200' CONT.:

N/F WILLIAM & HEIDI VOLTZ
29 MEETINGHOUSE ROAD
BARRINGTON, NH 03825
TAX MAP 234, LOT 25-5
S.C.R.D. BOOK 4833, PAGE 761

N/F TYLER & ALISON BRIAND
35 MEETINGHOUSE ROAD
BARRINGTON, NH 03825
TAX MAP 234, LOT 25-6
S.C.R.D. BOOK 5041, PAGE 944

N/F MONA C & LEW ANGCUTCHEON
37 MEETINGHOUSE ROAD
BARRINGTON, NH 03825
TAX MAP 234, LOT 25-7
S.C.R.D. BOOK 5091, PAGE 727

N/F SMOKE STREET LLC
8 HILLSIDE LANE
NEWARKET, NH 03857
TAX MAP 234, LOT 28
S.C.R.D. BOOK 4694, PAGE 971

N/F LISA BOUCHARD
761 FRANKLIN PIERCE HIGHWAY
BARRINGTON, NH 03825
TAX MAP 234, LOT 87
S.C.R.D. BOOK 4764, PAGE 474

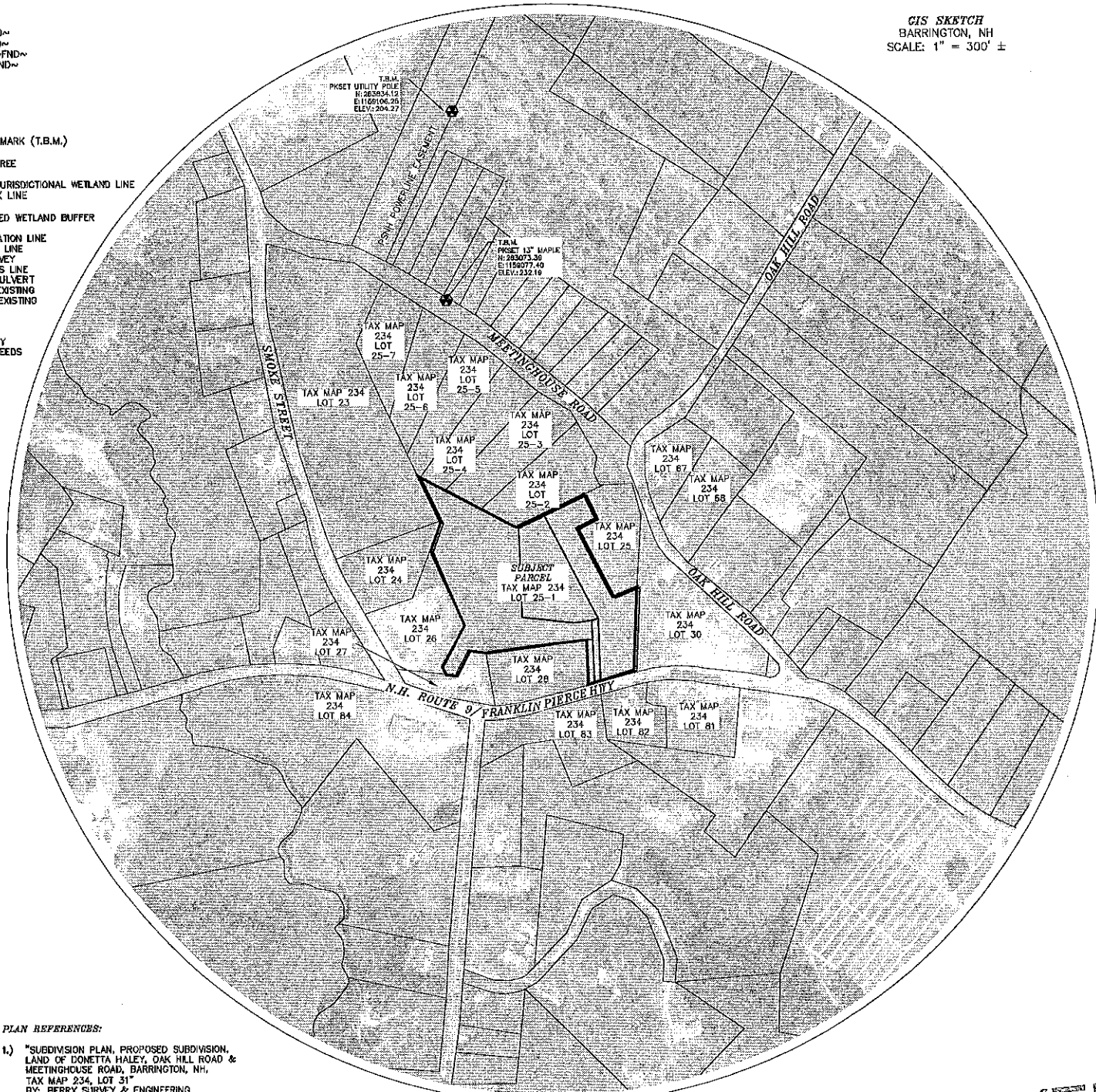
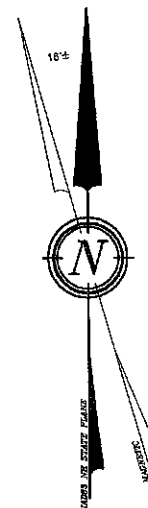
N/F THOMAS E. KENT
757 FRANKLIN PIERCE HIGHWAY
BARRINGTON, NH 03825
TAX MAP 234, LOT 29
S.C.R.D. BOOK 4482, PAGE 316

PROPOSED LEGEND:

GRANITE BOUND ~TBS~
3/4" REBAR W/ ID CAP ~TBS~
1/2" EASEMENT IRON BOUND W/ID CAP ~TBS~
UTILITY POLE
OUTLET STRUCTURE
CATCH BASIN
SIGNAGE
CHECK DAM-MATERIAL AS SPECIFIED
FLOW ARROW
WELL
TEMPORARY BENCH MARK (T.B.M.)
DETAIL SHEET / DETAIL
MATCH POINT
MATCH LINE
CONTOUR MINOR, PROPOSED
CONTOUR MAJOR, PROPOSED
DRAIN CULVERT W/ FLARED END SECTION (F.E.S.)
GUARD RAIL
SHOULDER
CENTER LINE
BUILDING SETBACK LINE
SUBDIVISION BOUNDARY LINE
75' PROTECTIVE WELL RADIUS (NHDES)
SAW CUT & MILL
TRANSFORMER / J.BOX
UNDERGROUND UTILITY
UNDER DRAIN
SILT FENCE / EROSION MIX BERM
FILTRATION 12" SILT SOX AS SPECIFIED
ORANGE CONSTRUCTION PERIMETER FENCE
PHASE LINE
NRCS SOIL DELINEATION
SOIL TYPE
RIP RAP
RAIN GARDEN
BERM
4,000 Sq. Ft. EFFLUENT LEACHING AREA

EXISTING LEGEND:

DRILL HOLE ~FND~
IRON PIPE ~FND~
IRON BOUND ~FND~
CHISEL MARK ~FND~
GRANITE BOUND ~FND~
STONE BOUND ~FND~
UTILITY POLE
GUY WIRE
SIGNAGE
TEST PIT
TEMPORARY BENCHMARK (T.B.M.)
BLAZED/PAINTED TREE
POORLY DRAINED JURISDICTIONAL WETLAND LINE
BUILDING SETBACK LINE
EASEMENT LINE
50' POORLY DRAINED WETLAND BUFFER
STONE WALL
NRCS SOIL DELINEATION LINE
SITE SPECIFIC SOIL LINE
LIMIT OF SOIL SURVEY
OVERHEAD UTILITIES LINE
EXISTING DRAIN CULVERT
CONTOUR MINOR, EXISTING
CONTOUR MAJOR, EXISTING
SOIL SERIES
NRCS SOIL LABEL
STRAFFORD COUNTY
REGISTRY OF DEEDS
TYP. FND



GIS SKETCH
BARRINGTON, NH
SCALE: 1" = 300' ±

SIGN ID NUMBER	SIGN SIZE (WIDTH x HEIGHT)	SIGN	TEXT DIMENSIONS	NO. OF SIGNS	BACKGROUND	LEGEND	BORDER	POST SIZE & QUANTITY
R1-1	30"x30"	STOP	SEE STANDARD HIGHWAY SIGNS 2004 EDITION PUBLISHED BY USDOT - FHWA	2	RED	WHITE	WHITE	SQUARE (2)
RB-31	18"x24"	NO PARKING	SEE STANDARD HIGHWAY SIGNS 2004 EDITION PUBLISHED BY USDOT - FHWA	2	WHITE	RED	RED	SQUARE (2)
R2-1	12"x18"	SPEED LIMIT 25	SEE STANDARD HIGHWAY SIGNS 2004 EDITION PUBLISHED BY USDOT - FHWA	2	WHITE	BLACK	BLACK	SQUARE (2)

PLAN REFERENCES:

- "SUBDIVISION PLAN, PROPOSED SUBDIVISION, LAND OF DONETTA HALEY, OAK HILL ROAD & MEETINGHOUSE ROAD, BARRINGTON, NH, TAX MAP 234, LOT 31" BY: BERRY SURVEY & ENGINEERING DATED: DECEMBER 30, 2016 S.C.R.D. PLAN #113-015 ALSO ON FILE AT THIS OFFICE
- "LOT LINE REVISION OVERVIEW, PROPOSED LOT LINE REVISION, LAND OF DONETTA HALEY & PAUL J & SUZANNE W. MCNEIL, P&S MCNEIL FAMILY REVOCABLE TRUST, OAK HILL ROAD & MEETINGHOUSE ROAD, BARRINGTON, NH, TAX MAP 234, LOT 31 & 36" BY: BERRY SURVEY & ENGINEERING DATED: DECEMBER 30, 2016 S.C.R.D. PLAN #113-012 ALSO ON FILE AT THIS OFFICE
- "REVISED BOUNDARY PLAN, PATRICK P. LAVOIE AND WALDRON B. HALEY, BARRINGTON, N.H." BY: FREDERICK E. DREW ASSOCIATES DATED: DECEMBER 1985 S.C.R.D. PLAN #28-74
- "REVISED BOUNDARY PLAN WALDRON B HALEY, BARRINGTON N.H." BY: FREDERICK E. DREW ASSOCIATES DATED: MARCH 1984 S.C.R.D. PLAN #22-140
- "PLAN OF LAND DONALD M. MOONIE, BARRINGTON, N.H." BY: FREDERICK E. DREW ASSOCIATES DATED: DECEMBER 1983 S.C.R.D. PLAN #22-141

PLAN REFERENCES CONT:

- "REVISED BOUNDARY PLAN PATRICK LAVOIE, DOUGLAS CAMPBELL, STEVEN LENZI, BRIAN LENZI, BARRINGTON, N.H." BY: FREDERICK E. DREW ASSOCIATES DATED: SEPTEMBER 1988 S.C.R.D. PLAN #64-19
- "REVISED BOUNDARY PLAN WALDRON B. HALEY BARRINGTON, N.H." BY: FREDERICK E. DREW ASSOCIATES DATED: MAY 1986 S.C.R.D. PLAN #26-4
- "FINAL PLAN ROWELL & TIEDEMANN SUBDIVISION, BARRINGTON, N.H." BY: FREDERICK E. DREW ASSOCIATES DATED: AUGUST 1974 S.C.R.D. PLAN #34, POCKET #9, FOLDER #3
- "REVISED BOUNDARY PLAN AND LOTS 18, 19, AND 20, ROWELL SUBDIVISION" BY: FREDERICK E. DREW ASSOCIATES DATED: JUNE 1977 S.C.R.D. PLAN #17A-165
- "SUBDIVISION PLAN WALDRON B. HALEY & OLEVA WATSON" BY: ORVIS/DREW, LLC DATED: OCTOBER 1999 S.C.R.D. PLAN #57-73

PLAN REFERENCES CONT:

- "BOUNDARY ADJUSTMENT PLAN, BARRINGTON, STRAFFORD COUNTY, NEW HAMPSHIRE, PREPARED FOR WALDRON B. HALEY & OLEVA WATSON, MICHAEL J. DAVIS REALTY, LLC AND CHAPEL OF NATIVITY" BY: ORVIS/DREW, LLC DATED: JANUARY 15, 2004 S.C.R.D. PLAN #76-30
- "RESEARCH PLAN OF S.W. END LOTS 92-95, BARRINGTON N.H." BY: F.E. DREW DATED: 1972 ON FILE AT THIS OFFICE
- "A PLAN OF EDNA SMITH PROPERTY, BARRINGTON, N.H." BY: F.E. DREW DATED: JULY 1972 ON FILE AT THIS OFFICE
- "SUBDIVISION OVERVIEW, PROPOSED SUBDIVISION LAND OF DONETTA HALEY, OAK HILL ROAD & MEETINGHOUSE ROAD, BARRINGTON, N.H." BY: BERRY SURVEYING & ENGINEERING DATED: DECEMBER 30, 2016 FILE NO. DB2016-091 S.C.R.D. PLAN #113-14

RECEIVED
OCT 12 2022
LAND USE OFFICE

REVISION	DATE	DESCRIPTION

NEIGHBORHOOD PLAN
LAND OF
TSB CONSTRUCTION LLC
FRANKLIN PIERCE HIGHWAY / NH ROUTE 9
BARRINGTON, NH
TAX MAP 234, LOT 25-1

BERRY SURVEYING & ENGINEERING
335 SECOND CROWN POINT ROAD
BARRINGTON, NH 03825 (603)352-2863

SCALE: AS SHOWN
DATE: OCTOBER 12, 2022
FILE NO.: DB 2022 - 051

STATE OF NEW HAMPSHIRE
KENNETH A.
DRAFT

THE SUBDIVISION REGULATIONS OF THE TOWN OF BARRINGTON ARE A PART OF THIS PLAN AND APPROVAL OF THIS PLAN IS CONSIDERED UPON COMPLETION OF ALL REQUIREMENTS OF SAID SUBDIVISION REGULATIONS, EXCEPTING ONLY MODIFICATIONS MADE IN WRITING BY THE BOARD AND ATTACHED HERETO.

SHEET 1 OF 22

NOTES:

- 1.) OWNER: TSB CONSTRUCTION LLC
44 MERRYFIELD LANE
HAMPSHIRE, NH 03828
- 2.) TAX MAP 234, LOT 25-1
- 3.) LOT AREA: 411,188 Sq. Ft., 9.44 Ac.
TOTAL UPLAND AREA: 411,188 SqFt., 9.44 Ac.
- 4.) S.C.R.D. BOOK 4487, PAGE 985
- 5.) THE INTENT OF THIS PLAN IS TO PROVIDE THE SITE SPECIFIC SOILS MAPPING FOR THE PROJECT SITE TO AID IN THE STORMWATER DESIGN OF THE PROJECT SITE.

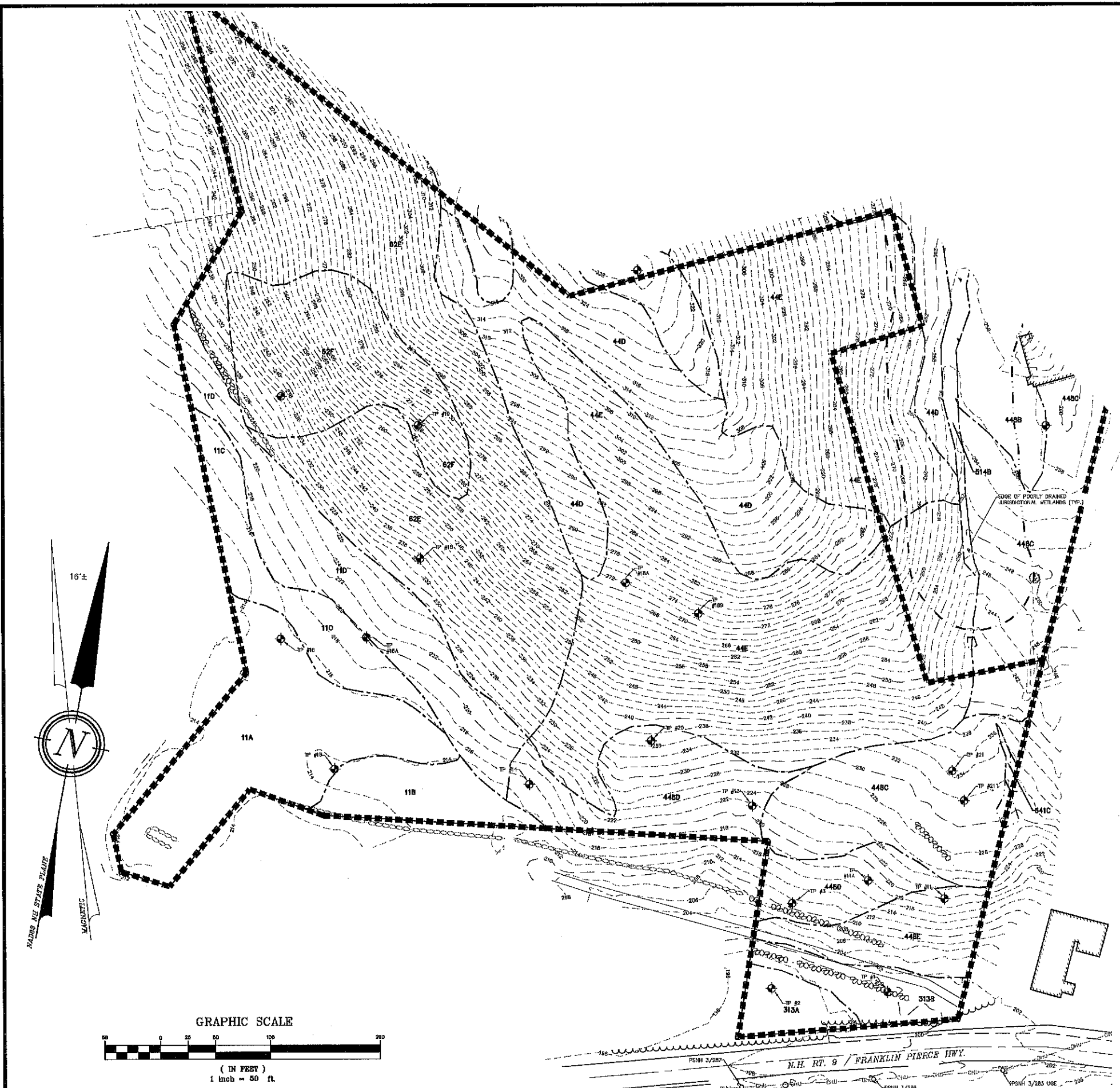
LEGEND:

- IRON BOUND (TBS)
- IRON BOUND (FND)
- DRILL HOLE (FND)
- GRANITE BOUND (TBS)
- UTILITY POLE/GUY WIRE
- TEST HOLE
- BENCHMARK
- STONE WALL
- WETLAND LINE
- 50' WETLAND BUFFER
- OVERHEAD UTILITIES LINE
- EXISTING CONTOUR MINOR
- EXISTING CONTOUR MAJOR
- MATCH LINE/MATCH POINT
- SOIL LINE
- LIMIT OF SOIL SURVEY
- 448A S.C.R.D. STRAFFORD COUNTY REGISTRY OF DEEDS
- TYP. TYPICAL
- FND FOLDED
- TBA TO BE ABANDONED

SOILS LEGEND

SYMBOL	SOIL TAXONOMIC NAME	HYDROLOGIC SOIL GROUP/NHDES GROUP
11A	GLOUCESTER SANDY LOAM	A/1
11B	GLOUCESTER SANDY LOAM	A/1
11C	GLOUCESTER SANDY LOAM	A/1
11D	GLOUCESTER SANDY LOAM	A/1
44B	MONTAUK FINE SANDY LOAM	C/3
44C	MONTAUK FINE SANDY LOAM	C/3
44D	MONTAUK FINE SANDY LOAM	C/3
44E	MONTAUK FINE SANDY LOAM	C/3
62E	CHARLTON FINE SANDY LOAM	B/2
62F	CHARLTON FINE SANDY LOAM	B/2
313B/MWD	DEERFIELD LOAMY SAND	B/2
315B/SWPD	DEERFIELD VARIANT	B/3
448B	SCITUATE FINE SANDY LOAM	C/3
448C	SCITUATE FINE SANDY LOAM	C/3
448D	SCITUATE FINE SANDY LOAM	C/3
448E	SCITUATE FINE SANDY LOAM	C/3
514P/PD	LEICESTER SANDY LOAM	C/5
514C/PD	LEICESTER SANDY LOAM	C/5

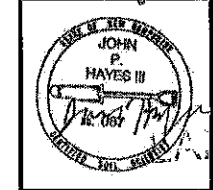
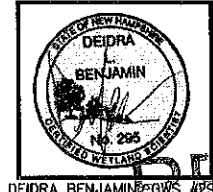
SLOPES: 0-3% A 25%-50% E DENOMINATOR: /PD = POORLY DRAINED
 3-8% B 50%+ F /SWPD = SOMEWHAT POORLY DRAINED
 8-15% C /MWD = MODERATELY WELL DRAINED
 15-25% D



REVISION	DATE	DESCRIPTION

SITE SPECIFIC SOILS MAP
 LAND OF
 TSB CONSTRUCTION LLC
 FRANKLIN PIERCE HIGHWAY /NH ROUTE 9
 BARRINGTON, NH
 TAX MAP 234, LOT 25-1

BERRY SURVEYING & ENGINEERING
 335 SECOND CROWN POINT ROAD
 BARRINGTON, NH 03825 (603)352-2863
 SCALE: 1 IN. EQUALS 50 FT.
 DATE: OCTOBER 12, 2022
 FILE NO.: DB 2022 - 051



JOHN P. HAYES III, CSS #87

RECEIVED

OCT 12 2022

USE OFFICE
 THE ENGINEERING REGULATIONS OF THE TOWN OF BARRINGTON ARE A PART OF THIS PLAN, AND APPROVAL OF THIS PLAN IS CONTINGENT UPON COMPLETION OF ALL REQUIREMENTS OF SAID SITE REVIEW REGULATIONS, EXCEPTING ONLY MODIFICATIONS MADE IN WRITING BY THE BOARD AND ATTACHED HERETO.



TEST PIT DATA:

TEST PIT #1
0-14" 10YR 3/2, FINE SANDY LOAM, GRANULAR, FRIABLE
14-38" 10YR 3/6, FINE SANDY LOAM, GRANULAR, FRIABLE
38-88" 2.5Y 5/8, FINE SAND, SINGLE GRAIN, LOOSE
MOTTLES - 10YR 5/8 CONCENTRATIONS & DEPLETIONS
68-72" 2.5Y 5/8, FINE SAND, SINGLE GRAIN, LOOSE
MOTTLES - 10YR 5/8 CONCENTRATIONS & DEPLETIONS

TEST PIT #2
0-22" 10YR 3/3, FINE SANDY LOAM, GRANULAR, FRIABLE
22-27" 7.5YR 4/6, COARSE SAND, SINGLE GRAIN, LOOSE
MOTTLES - 10% GRAVEL
27-48" 10YR 5/8, FINE SAND, SINGLE GRAIN, LOOSE
48-72" 2.5Y 5/8, FINE SAND, SINGLE GRAIN, LOOSE
MOTTLES - 7.5YR 4/8 CONCENTRATIONS & DEPLETIONS
MOTTLES - 2.5Y 6/2 CONCENTRATIONS & DEPLETIONS

TEST PIT #3
0-6" 10YR 3/3, FINE SANDY LOAM, GRANULAR, FRIABLE
6-18" 10YR 4/8, FINE SANDY LOAM, GRANULAR, FRIABLE
18-68" 2.5Y 4/3, SAND, SINGLE GRAIN, LOOSE
MOTTLES - 10YR 5/8 CONCENTRATIONS & DEPLETIONS

TEST PIT #4
0-2" 10YR 2/2, FINE SANDY LOAM, GRANULAR, FRIABLE
2-5" 10YR 3/6, FINE SANDY LOAM, GRANULAR, FRIABLE
5-10" 10YR 4/6, FINE SANDY LOAM, GRANULAR, FRIABLE
10-26" 2.5Y 5/8, FINE SANDY LOAM, GRANULAR, FRIABLE
26-40" 2.5Y 4/3, SAND, SINGLE GRAIN, LOOSE
LARGE COBBLES 0-10"
48-60" 2.5Y 4/3, SAND, ANGLULAR BLOCKY, FIRM
MOTTLES - 10YR 5/8, CONCENTRATIONS & DEPLETIONS

TEST PIT #5
0-8" 10YR 2/1, FINE SANDY LOAM, GRANULAR, FRIABLE
8-11" 10YR 5/8, FINE SANDY LOAM, GRANULAR, FRIABLE
11-19" 2.5Y 5/8, FINE SANDY LOAM, GRANULAR, FRIABLE
19-28" 2.5Y 5/3, FINE SANDY LOAM, ANGLULAR BLOCKY, FRIABLE
28-37" 2.5Y 5/3, FINE SANDY LOAM, ANGLULAR BLOCKY, FIRM
MOTTLES - 2.5Y 6/8 CONCENTRATIONS & DEPLETIONS
LEGE - LARGE BOULDERS
37-43" 2.5Y 4/4, SANDY LOAM, ANGLULAR BLOCKY, FRIABLE
MOTTLES - 2.5Y 6/8 CONCENTRATIONS & DEPLETIONS
43-65" 2.5Y 4/4, SANDY LOAM, ANGLULAR BLOCKY, FRIABLE
MOTTLES - 10YR 5/8 CONCENTRATIONS & DEPLETIONS

TEST PIT #6 & #6A
0-10" 10YR 2/1, FINE SANDY LOAM, GRANULAR, FRIABLE
10-20" 7.5Y 4/6, FINE SANDY LOAM, GRANULAR, FRIABLE
20-31" 10YR 4/8, SANDY LOAM, GRANULAR, FRIABLE
31-40" 2.5Y 5/3, SAND, WEAK ANGLULAR BLOCKY, FIRM
40-59" 2.5Y 5/4, SAND, SINGLE GRAIN, LOOSE
MOTTLES - 10YR 5/8 CONCENTRATIONS & DEPLETIONS

TEST PIT #7
0-4" 10YR 2/2, FINE SANDY LOAM, GRANULAR, FRIABLE
4-11" 10YR 4/6, FINE SANDY LOAM, GRANULAR, FRIABLE
11-23" 2.5Y 5/4, SAND, GRANULAR, FRIABLE
23-31" 2.5Y 5/4, SAND, ANGLULAR BLOCKY, FIRM
31-43" 2.5Y 5/4, FINE SAND, SINGLE GRAIN, LOOSE
43-73" 2.5Y 4/3, FINE SAND, SINGLE GRAIN, LOOSE
MOTTLES - 10YR 5/8 CONCENTRATIONS & DEPLETIONS

TEST PIT #8
0-14" 10YR 3/2, FINE SANDY LOAM, GRANULAR, FRIABLE
14-38" 10YR 3/6, FINE SANDY LOAM, GRANULAR, FRIABLE
38-88" 2.5Y 5/8, FINE SAND, SINGLE GRAIN, LOOSE
MOTTLES - 10YR 5/8 CONCENTRATIONS & DEPLETIONS
68-72" 2.5Y 5/8, FINE SAND, SINGLE GRAIN, LOOSE
MOTTLES - 10YR 5/8 CONCENTRATIONS & DEPLETIONS

TEST PIT DATA:

TEST PIT #9
0-10" 10YR 3/2, FINE SANDY LOAM, GRANULAR, FRIABLE
10-18" 10YR 4/6, FINE SANDY LOAM, GRANULAR, FRIABLE
18-26" 2.5Y 5/4, FINE SANDY LOAM, ANGLULAR BLOCKY, FRIABLE
26-51" 2.5Y 4/2, FINE SAND, ANGLULAR BLOCKY, FIRM
51-74" 2.5Y 4/2, FINE SAND, ANGLULAR BLOCKY, FIRM
MOTTLES - 10YR 5/8 CONCENTRATIONS & DEPLETIONS

TEST PIT #10 & 10A & 10B
0-8" 10YR 3/2, FINE SANDY LOAM, GRANULAR, FRIABLE
8-16" 2.5Y 5/8, FINE SANDY LOAM, GRANULAR, FRIABLE
16-38" 2.5Y 5/4, FINE SANDY LOAM, GRANULAR, FRIABLE
38-64" 2.5Y 4/4, SILT LOAM, WEAK ANGLULAR BLOCKY, FRIABLE
64-65" 2.5Y 4/2, SILT, ANGLULAR BLOCKY, FRIABLE
MOTTLES - 10YR 5/8 CONCENTRATIONS & DEPLETIONS

TEST PIT #11 & 11A
0-2" 10YR 2/1, FOREST MAT
2-8" 10YR 3/3, FINE SANDY LOAM, GRANULAR, FRIABLE
8-18" 10YR 4/6, FINE SANDY LOAM, GRANULAR, FRIABLE
18-25" 2.5Y 5/8, GRAVELLY SAND, SINGLE GRAIN, LOOSE
MOTTLES - 10% GRAVEL
25-32" 2.5Y 5/8, SAND, SINGLE GRAIN, LOOSE
MOTTLES - 7.5Y 4/8 CONCENTRATIONS & DEPLETIONS

TEST PIT #12
0-8" 10YR 2/2, FINE SANDY LOAM, GRANULAR, FRIABLE
8-28" 10YR 4/6, FINE SANDY LOAM, GRANULAR, FRIABLE
28-44" 2.5Y 5/4, FINE SAND, ANGLULAR BLOCKY, FRIABLE
MOTTLES - 7.5Y 4/6 CONCENTRATIONS & DEPLETIONS

TEST PIT #13
0-2" 10YR 2/1, FOREST MAT
2-8" 10YR 3/3, FINE SANDY LOAM, GRANULAR, FRIABLE
8-14" 10YR 4/8, FINE SANDY LOAM, GRANULAR, FRIABLE
14-28" 2.5Y 5/4, FINE SAND, ANGLULAR BLOCKY, FRIABLE
LARGE COBBLES STARTING AT 14"
28-40" 2.5Y 5/3, SAND, ANGLULAR BLOCKY, FIRM
MOTTLES - 10YR 5/8 CONCENTRATIONS & DEPLETIONS
40-72" 2.5Y 5/4, COARSE SAND, SINGLE GRAIN, LOOSE
MOTTLES - 10YR 5/8 CONCENTRATIONS & DEPLETIONS

TEST PIT #14
0-11" 10YR 3/3, FINE SANDY LOAM, GRANULAR, FRIABLE
11-20" 10YR 4/6, FINE SANDY LOAM, GRANULAR, FRIABLE
20-34" 2.5Y 5/4, FINE SAND, SINGLE GRAIN, LOOSE
MOTTLES - 10YR 5/8

TEST PIT #15
0-4" 10YR 2/2, FINE SANDY LOAM, GRANULAR, FRIABLE
4-11" 10YR 4/6, FINE SANDY LOAM, GRANULAR, FRIABLE
11-23" 2.5Y 5/4, SAND, GRANULAR, FRIABLE
23-31" 2.5Y 5/4, SAND, ANGLULAR BLOCKY, FIRM
31-43" 2.5Y 5/4, FINE SAND, SINGLE GRAIN, LOOSE
43-73" 2.5Y 4/3, FINE SAND, SINGLE GRAIN, LOOSE
MOTTLES - 10YR 5/8 CONCENTRATIONS & DEPLETIONS

TEST PIT #16
0-10" 10YR 3/2, FINE SANDY LOAM, GRANULAR, FRIABLE
10-18" 10YR 4/6, FINE SANDY LOAM, GRANULAR, FRIABLE
18-26" 2.5Y 5/4, FINE SANDY LOAM, ANGLULAR BLOCKY, FRIABLE
26-51" 2.5Y 4/2, FINE SAND, ANGLULAR BLOCKY, FIRM
51-74" 2.5Y 4/2, FINE SAND, ANGLULAR BLOCKY, FIRM
MOTTLES - 10YR 5/8 CONCENTRATIONS & DEPLETIONS

TEST PIT DATA:

TEST PIT #16
0-10" 10YR 3/3, FINE SANDY LOAM, GRANULAR, FRIABLE
10-12" 10YR 4/4, FINE SANDY LOAM, GRANULAR, FRIABLE
12-21" 2.5Y 5/4, FINE SANDY LOAM, GRANULAR, FRIABLE
21-39" 2.5Y 5/4, FINE SANDY LOAM, ANGLULAR BLOCKY, FRIABLE
39-45" 10YR 4/6, COARSE SAND, SINGLE GRAIN, LOOSE
30% GRAVEL/COBBLES
45-72" 2.5Y 5/4, COARSE SAND, SINGLE GRAIN, LOOSE
MOTTLES - 10YR 4/8 CONCENTRATIONS & DEPLETIONS
30% GRAVEL/COBBLES

TEST PIT #17
0-5" 10YR 3/4, FINE SANDY LOAM, GRANULAR, FRIABLE
5-17" 2.5Y 6/8, FINE SANDY LOAM, GRANULAR, FRIABLE
17-28" 2.5Y 6/8, FINE SANDY LOAM, GRANULAR, FRIABLE
28-47" 2.5Y 6/8, FINE SANDY LOAM, GRANULAR, FRIABLE
47-48" 2.5Y 6/4, FINE SAND, ANGLULAR BLOCKY, FRIABLE
48-49" 7.5YR 5/8, FINE SAND, ANGLULAR BLOCKY, FIRM
49-72" 2.5Y 6/4, FINE SAND, ANGLULAR BLOCKY, FRIABLE
MOTTLES - 7.5YR 4/8 CONCENTRATIONS & DEPLETIONS

TEST PIT #18 & 18A
0-5" 10YR 3/4, FINE SANDY LOAM, GRANULAR, FRIABLE
5-17" 2.5Y 6/8, FINE SANDY LOAM, GRANULAR, FRIABLE
17-28" 2.5Y 6/8, FINE SANDY LOAM, GRANULAR, FRIABLE
28-47" 2.5Y 6/8, FINE SANDY LOAM, GRANULAR, FRIABLE
47-48" 2.5Y 6/4, FINE SAND, ANGLULAR BLOCKY, FRIABLE
48-49" 7.5YR 5/8, FINE SAND, ANGLULAR BLOCKY, FIRM
49-72" 2.5Y 6/4, FINE SAND, ANGLULAR BLOCKY, FRIABLE
MOTTLES - 7.5YR 4/8 CONCENTRATIONS & DEPLETIONS

TEST PIT #19
0-2" 10YR 2/1, FOREST MAT
2-8" 10YR 3/3, FINE SANDY LOAM, GRANULAR, FRIABLE
8-18" 10YR 4/6, FINE SANDY LOAM, GRANULAR, FRIABLE
18-25" 2.5Y 5/8, GRAVELLY SAND, SINGLE GRAIN, LOOSE
MOTTLES - 10% GRAVEL
25-32" 2.5Y 5/8, SAND, SINGLE GRAIN, LOOSE
MOTTLES - 7.5Y 4/8 CONCENTRATIONS & DEPLETIONS

TEST PIT #20
0-4" 10YR 2/2, FINE SANDY LOAM, GRANULAR, FRIABLE
4-14" 10YR 4/6, FINE SANDY LOAM, GRANULAR, FRIABLE
14-22" 10YR 5/8, FINE SANDY LOAM, GRANULAR, FRIABLE
22-42" 2.5Y 5/4, FINE SANDY LOAM, GRANULAR, FRIABLE
MOTTLES - 50% COBBLES
42-72" 2.5Y 5/3, FINE SANDY LOAM, GRANULAR, FRIABLE
MOTTLES - 50% COBBLES

TEST PIT #21
0-2" 10YR 2/1, FOREST MAT
2-8" 10YR 3/3, FINE SANDY LOAM, GRANULAR, FRIABLE
8-14" 10YR 4/8, FINE SANDY LOAM, GRANULAR, FRIABLE
14-28" 2.5Y 5/4, FINE SAND, ANGLULAR BLOCKY, FRIABLE
LARGE COBBLES STARTING AT 14"
28-40" 2.5Y 5/3, SAND, ANGLULAR BLOCKY, FIRM
MOTTLES - 10YR 5/8 CONCENTRATIONS & DEPLETIONS
40-72" 2.5Y 5/4, COARSE SAND, SINGLE GRAIN, LOOSE
MOTTLES - 10YR 5/8 CONCENTRATIONS & DEPLETIONS

TEST PIT #22
0-11" 10YR 3/3, FINE SANDY LOAM, GRANULAR, FRIABLE
11-20" 10YR 4/6, FINE SANDY LOAM, GRANULAR, FRIABLE
20-34" 2.5Y 5/4, FINE SAND, SINGLE GRAIN, LOOSE
MOTTLES - 10YR 5/8

TEST PIT #23
0-2" 10YR 2/1, FOREST MAT
2-8" 10YR 3/3, FINE SANDY LOAM, GRANULAR, FRIABLE
8-14" 10YR 4/8, FINE SANDY LOAM, GRANULAR, FRIABLE
14-28" 2.5Y 5/4, FINE SAND, ANGLULAR BLOCKY, FRIABLE
LARGE COBBLES STARTING AT 14"
28-40" 2.5Y 5/3, SAND, ANGLULAR BLOCKY, FIRM
MOTTLES - 10YR 5/8 CONCENTRATIONS & DEPLETIONS
40-72" 2.5Y 5/4, COARSE SAND, SINGLE GRAIN, LOOSE
MOTTLES - 10YR 5/8 CONCENTRATIONS & DEPLETIONS

TEST PIT DATA:

TEST PIT #24
0-8" 10YR 3/3, FINE SANDY LOAM, GRANULAR, FRIABLE
8-13" 10YR 5/8, FINE SANDY LOAM, WEAK SUBANGULAR BLOCKY, FRIABLE
13-25" 2.5Y 5/8, SANDY LOAM, WEAK SUBANGULAR BLOCKY, FRIABLE
25-35" 2.5Y 5/4, LOAMY SAND, GRANULAR, FRIABLE
MOTTLES - FIRM IN PLACE, PAN
35-40" 2.5Y 5/4, SAND, SINGLE GRAIN, LOOSE
MOTTLES - RIPPLED LEGE WITH SOIL IN CRACKS
46" LEGE

TEST PIT #25
0-5" 10YR 3/2, FINE SANDY LOAM, GRANULAR, FRIABLE
5-14" 2.5Y 6/2, FINE SANDY LOAM, GRANULAR, FRIABLE
MOTTLES - 10YR 5/8
14-28" 2.5Y 6/4, SAND, SINGLE GRAIN, LOOSE
MOTTLES - 10YR 5/8, 10% GRAVEL, PAN
28-72" 2.5Y 6/3, SAND, SINGLE GRAIN, LOOSE
MOTTLES - 10YR 5/8

TEST PIT #26
0-5" 10YR 3/2, FINE SANDY LOAM, GRANULAR, FRIABLE
5-13" 10YR 5/2, LOAMY SAND, GRANULAR, FRIABLE
13-31" 2.5Y 4/2, SAND, SINGLE GRAIN, LOOSE
MOTTLES - 10YR 5/8
31-63" 2.5Y 6/2, SAND, SINGLE GRAIN, LOOSE
MOTTLES - 10YR 6/8
63" LEGE
RUTTED AREA WITH SOME STANDING WATER 20' FROM THE ROCK WALL. VEGETATION OBSERVED INCLUDING SOFT RUSH & CAREX LURIDA. PIT WAS DUG APPROXIMATELY 20' FROM THE WALL TO AVOID THIS AREA.

TEST PIT #27
0-8" 10YR 3/3, FINE SANDY LOAM, GRANULAR, FRIABLE
8-17" 2.5Y 6/1, SAND, SINGLE GRAIN, LOOSE
MOTTLES - 10YR 5/8, 10% REDOX
17-25" 2.5Y 6/1, SAND, SINGLE GRAIN, LOOSE
MOTTLES - 10YR 5/8, 50% REDOX
25-72" 10YR 6/8, SAND, SINGLE GRAIN, LOOSE
MOTTLES - 10YR 5/8, 2.5 Y 6/1

TEST PIT #28
0-8" 10YR 3/3, FINE SANDY LOAM, GRANULAR, FRIABLE
8-21" 2.5Y 5/4, FINE SANDY LOAM, GRANULAR, FRIABLE
21-27" 2.5Y 6/4, FINE SAND, GRANULAR, FRIABLE
MOTTLES - 10YR 5/8
27-72" 2.5Y 5/4, FINE SAND, GRANULAR, FRIABLE
MOTTLES - 10YR 5/8, 2.5Y 6/1, 10% COBBLES

TEST PIT #29
0-4" 10YR 4/2, FINE SANDY LOAM, GRANULAR, FRIABLE
4-17" 10YR 5/6, FINE SANDY LOAM, GRANULAR, FRIABLE
17-28" 2.5Y 5/8, FINE SANDY LOAM, GRANULAR, FRIABLE
MOTTLES - 10YR 5/8
28-72" 2.5Y 5/4, FINE SANDY LOAM, WEAK SUBANGULAR BLOCKY, FRIABLE
MOTTLES - 10YR 5/8

TEST PIT #30
0-5" 10YR 4/2, FINE SANDY LOAM, GRANULAR, FRIABLE
5-10" 10YR 5/6, FINE SANDY LOAM, SUBANGULAR BLOCKY, FRIABLE
MOTTLES - 10% COBBLES
10-25" 2.5Y 6/8, FINE SANDY LOAM, GRANULAR, FRIABLE
MOTTLES - 10% COBBLES
25-41" 2.5Y 5/3, LOAMY SAND, GRANULAR, FRIABLE
MOTTLES - 10YR 5/8, 5% GRAVEL, PAN
VERY STONY IN TOP 2' OF PIT

TEST PIT #31
0-8" 10YR 3/3, FINE SANDY LOAM, GRANULAR, FRIABLE
8-13" 10YR 5/8, FINE SANDY LOAM, WEAK SUBANGULAR BLOCKY, FRIABLE
13-25" 2.5Y 5/8, SANDY LOAM, WEAK SUBANGULAR BLOCKY, FRIABLE
25-35" 2.5Y 5/4, LOAMY SAND, GRANULAR, FRIABLE
MOTTLES - FIRM IN PLACE, PAN
35-40" 2.5Y 5/4, SAND, SINGLE GRAIN, LOOSE
MOTTLES - RIPPLED LEGE WITH SOIL IN CRACKS
46" LEGE

TEST PIT DATA:

TEST PIT #32
0-8" 10YR 3/3, FINE SANDY LOAM, GRANULAR, FRIABLE
8-14" 10YR 5/8, FINE SANDY LOAM, GRANULAR, FRIABLE
MOTTLES - 10% COBBLES
14-21" 2.5Y 6/6, FINE SANDY LOAM, GRANULAR, FRIABLE
MOTTLES - 10YR 5/8, 10% COBBLES, PAN
21-47" 2.5Y 6/4, LOAMY SAND, GRANULAR, FRIABLE
MOTTLES - 10YR 5/8, 15% GRAVEL, PAN
47-72" 2.5Y 5/4, FINE SAND, GRANULAR, FRIABLE
MOTTLES - 10YR 5/8

TEST PIT #33
0-8" 10YR 4/3, FINE SANDY LOAM, GRANULAR, FRIABLE
8-18" 10YR 4/6, FINE SANDY LOAM, GRANULAR, FRIABLE
18-31" 2.5Y 5/4, FINE SANDY LOAM, GRANULAR, FRIABLE
31-72" 2.5Y 6/4, LOAMY SAND, GRANULAR, FRIABLE
MOTTLES - 10YR 5/8, PAN
VERY LARGE ROCK WHERE PIT SHOULD HAVE BEEN DUG. DUG PIT 35' FROM ROCK WALL INSTEAD OF 25'

TEST PIT #34
0-8" 10YR 3/3, FINE SANDY LOAM, GRANULAR, FRIABLE
8-12" 10YR 4/6, FINE SANDY LOAM, GRANULAR, FRIABLE
12-21" 2.5Y 5/8, FINE SANDY LOAM, GRANULAR, FRIABLE
21-38" 2.5Y 4/4, FINE SAND, ANGLULAR BLOCKY, FRIABLE
38-46" 2.5Y 4/4, FINE SANDY LOAM, ANGLULAR BLOCKY, FRIABLE
46-71" 2.5Y 4/4, FINE SANDY LOAM, ANGLULAR BLOCKY, FRIABLE
MOTTLES - 10YR 5/8, 2.5Y 5/1

TEST PIT #35
0-5" 10YR 3/3, FINE SANDY LOAM, GRANULAR, FRIABLE
5-11" 10YR 5/8, FINE SANDY LOAM, GRANULAR, FRIABLE
11-25" 2.5Y 5/2, FINE SANDY LOAM, GRANULAR, FRIABLE
25-31" 2.5Y 5/8, FINE SANDY LOAM, GRANULAR, FRIABLE
31-72" 5Y 6/3, LOAMY FINE SAND, GRANULAR, FRIABLE
MOTTLES - 10YR 5/8, 10% COBBLES, PAN

TEST PIT #36
0-4" 10YR 3/3, FINE SANDY LOAM, GRANULAR, FRIABLE
4-12" 10YR 5/8, FINE SANDY LOAM, GRANULAR, FRIABLE
12-28" 2.5Y 6/8, FINE SANDY LOAM, GRANULAR, FRIABLE
28-38" 5Y 6/3, LOAMY FINE SAND, GRANULAR, FRIABLE
MOTTLES - 10% COBBLES
38-72" 5Y 6/3, FINE SAND, SUBANGULAR BLOCKY, FRIABLE
MOTTLES - 10YR 5/8, 10% COBBLES, PAN

TEST PIT #37
0-8" 10YR 3/3, FINE SANDY LOAM, GRANULAR, FRIABLE
8-18" 10YR 4/6, FINE SANDY LOAM, GRANULAR, FRIABLE
18-48" 2.5Y 5/4, FINE SANDY LOAM, WEAK ANGLULAR BLOCKY, FRIABLE
MOTTLES - 10% COBBLES
48-64" 2.5Y 4/3, SAND, ANGLULAR BLOCKY, FIRM
MOTTLES - 10YR 5/8, 2.5Y 5/1

TEST PIT #38
0-8" 10YR 3/3, FINE SANDY LOAM, GRANULAR, FRIABLE
8-12" 10YR 4/6, FINE SANDY LOAM, GRANULAR, FRIABLE
12-21" 2.5Y 5/8, FINE SANDY LOAM, GRANULAR, FRIABLE
21-38" 2.5Y 4/4, FINE SANDY LOAM, WEAK ANGLULAR BLOCKY, FRIABLE
38-46" 2.5Y 4/4, FINE SANDY LOAM, ANGLULAR BLOCKY, FRIABLE
46-71" 2.5Y 4/4, FINE SANDY LOAM, ANGLULAR BLOCKY, FRIABLE
MOTTLES - 10YR 5/8, 2.5Y 5/1

TEST PIT #39
0-8" 10YR 3/3, FINE SANDY LOAM, GRANULAR, FRIABLE
8-14" 10YR 5/8, FINE SANDY LOAM, GRANULAR, FRIABLE
MOTTLES - 10% COBBLES
14-21" 2.5Y 6/6, FINE SANDY LOAM, GRANULAR, FRIABLE
MOTTLES - 10YR 5/8, 10% COBBLES, PAN
21-47" 2.5Y 6/4, LOAMY SAND, GRANULAR, FRIABLE
MOTTLES - 10YR 5/8, 15% GRAVEL, PAN
47-72" 2.5Y 5/4, FINE SAND, GRANULAR, FRIABLE
MOTTLES - 10YR 5/8

TEST PIT DATA:

TEST PIT #40
0-8" 10YR 3/3, FINE SANDY LOAM, GRANULAR, FRIABLE
8-14" 10YR 5/8, FINE SANDY LOAM, GRANULAR, FRIABLE
MOTTLES - 10% COBBLES
14-21" 2.5Y 6/6, FINE SANDY LOAM, GRANULAR, FRIABLE
MOTTLES - 10YR 5/8, 10% COBBLES, PAN
21-47" 2.5Y 6/4, LOAMY SAND, GRANULAR, FRIABLE
MOTTLES - 10YR 5/8, 15% GRAVEL, PAN
47-72" 2.5Y 5/4, FINE SAND, GRANULAR, FRIABLE
MOTTLES - 10YR 5/8

TEST PIT #41
0-8" 10YR 3/3, FINE SANDY LOAM, GRANULAR, FRIABLE
8-14" 10YR 5/8, FINE SANDY LOAM, GRANULAR, FRIABLE
MOTTLES - 10% COBBLES
14-21" 2.5Y 6/6, FINE SANDY LOAM, GRANULAR, FRIABLE
MOTTLES - 10YR 5/8, 10% COBBLES, PAN
21-47" 2.5Y 6/4, LOAMY SAND, GRANULAR, FRIABLE
MOTTLES - 10YR 5/8, 15% GRAVEL, PAN
47-72" 2.5Y 5/4, FINE SAND, GRANULAR, FRIABLE
MOTTLES - 10YR 5/8

TEST PIT #42
0-8" 10YR 3/3, FINE SANDY LOAM, GRANULAR, FRIABLE
8-14" 10YR 5/8, FINE SANDY LOAM, GRANULAR, FRIABLE
MOTTLES - 10% COBBLES
14-21" 2.5Y 6/6, FINE SANDY LOAM, GRANULAR, FRIABLE
MOTTLES - 10YR 5/8, 10% COBBLES, PAN
21-47" 2.5Y 6/4, LOAMY SAND, GRANULAR, FRIABLE
MOTTLES - 10YR 5/8, 15% GRAVEL, PAN
47-72" 2.5Y 5/4, FINE SAND, GRANULAR, FRIABLE
MOTTLES - 10YR 5/8

TEST PIT #43
0-8" 10YR 3/3, FINE SANDY LOAM, GRANULAR, FRIABLE
8-14" 10YR 5/8, FINE SANDY LOAM, GRANULAR, FRIABLE
MOTTLES - 10% COBBLES
14-21" 2.5Y 6/6, FINE SANDY LOAM, GRANULAR, FRIABLE
MOTTLES - 10YR 5/8, 10% COBBLES, PAN
21-47" 2.5Y 6/4, LOAMY SAND, GRANULAR, FRIABLE
MOTTLES - 10YR 5/8, 15% GRAVEL, PAN
47-72" 2.5Y 5/4, FINE SAND, GRANULAR, FRIABLE
MOTTLES - 10YR 5/8

TEST PIT #44
0-8" 10YR 3/3, FINE SANDY LOAM, GRANULAR, FRIABLE
8-14" 10YR 5/8, FINE SANDY LOAM, GRANULAR, FRIABLE
MOTTLES - 10% COBBLES
14-21" 2.5Y 6/6, FINE SANDY LOAM, GRANULAR, FRIABLE
MOTTLES - 10YR 5/8, 10% COBBLES, PAN
21-47" 2.5Y 6/4, LOAMY SAND, GRANULAR, FRIABLE
MOTTLES - 10YR 5/8, 15% GRAVEL, PAN
47-72" 2.5Y 5/4, FINE SAND, GRANULAR, FRIABLE
MOTTLES - 10YR 5/8

TEST PIT #45
0-8" 10YR 3/3, FINE SANDY LOAM, GRANULAR, FRIABLE
8-14" 10YR 5/8, FINE SANDY LOAM, GRANULAR, FRIABLE
MOTTLES - 10% COBBLES
14-21" 2.5Y 6/6, FINE SANDY LOAM, GRANULAR, FRIABLE
MOTTLES - 10YR 5/8, 10% COBBLES, PAN
21-47" 2.5Y 6/4, LOAMY SAND, GRANULAR, FRIABLE
MOTTLES - 10YR 5/8, 15% GRAVEL, PAN
47-72" 2.5Y 5/4, FINE SAND, GRANULAR, FRIABLE
MOTTLES - 10YR 5/8

TEST PIT #46
0-8" 10YR 3/3, FINE SANDY LOAM, GRANULAR, FRIABLE
8-14" 10YR 5/8, FINE SANDY LOAM, GRANULAR, FRIABLE
MOTTLES - 10% COBBLES
14-21" 2.5Y 6/6, FINE SANDY LOAM, GRANULAR, FRIABLE
MOTTLES - 10YR 5/8, 10% COBBLES, PAN
21-47" 2.5Y 6/4, LOAMY SAND, GRANULAR, FRIABLE
MOTTLES - 10YR 5/8, 15% GRAVEL, PAN
47-72" 2.5Y 5/4, FINE SAND, GRANULAR, FRIABLE
MOTTLES - 10YR 5/8

TEST PIT #47
0-8" 10YR 3/3, FINE SANDY LOAM, GRANULAR, FRIABLE
8-14" 10YR 5/8, FINE SANDY LOAM, GRANULAR, FRIABLE
MOTTLES - 10% COBBLES
14-21" 2.5Y 6/6, FINE SANDY LOAM, GRANULAR, FRIABLE
MOTTLES - 10YR 5/8, 10% COBBLES, PAN
21-47" 2.5Y 6/4, LOAMY SAND, GRANULAR, FRIABLE
MOTTLES - 10YR 5/8, 15% GRAVEL, PAN
47-72" 2.5Y 5/4, FINE SAND, GRANULAR, FRIABLE
MOTTLES - 10YR 5/8

Table with 2 columns: REVISION, DESCRIPTION. Row 1: 1, Initial description of the project and location.

TEST PIT DATA
LAND OF
TSB CONSTRUCTION LLC
FRANKLIN PIERCE HIGHWAY / NH ROUTE 9
BARRINGTON, NH
TAX MAP 234, LOT 25-1

Professional seal for BERRY SURVEYING & ENGINEERING, INC. License No. 03825. Includes date OCTOBER 12, 2022 and file number DB 2022 - 051. A large 'RECEIVED' stamp is overlaid on the seal.

RECEIVED
OCT 12 2022
LAND USE OFFICE

CHRISTOPHER R. BERRY
NH PERMITTED DESIGNER #1886

PLAN REFERENCES:

- "SUBDIVISION PLAN, PROPOSED SUBDIVISION, LAND OF DONETTA HALEY, OAK HILL ROAD & MEETINGHOUSE ROAD, BARRINGTON, NH, TAX MAP 234, LOT 31" BY: BERRY SURVEY & ENGINEERING DATED: DECEMBER 30, 2016 S.C.R.D. PLAN #113-016 ALSO ON FILE AT THIS OFFICE
- "LOT LINE REVISION OVERVIEW, PROPOSED LOT LINE REVISION, LAND OF DONETTA HALEY & PAUL J. & SUZANNE W. MCNEIL, P&S MCNEIL FAMILY REVOCABLE TRUST, OAK HILL ROAD & MEETINGHOUSE ROAD, BARRINGTON, NH, TAX MAP 234, LOT 31 & 36" BY: BERRY SURVEY & ENGINEERING DATED: DECEMBER 30, 2016 S.C.R.D. PLAN #113-016 ALSO ON FILE AT THIS OFFICE
- "REVISED BOUNDARY PLAN, PATRICK P. LAVOIE AND WALDRON B. HALEY, BARRINGTON, N.H." BY: FREDERICK E. DREW ASSOCIATES DATED: DECEMBER 1985 S.C.R.D. PLAN #28-74
- "REVISED BOUNDARY PLAN WALDRON B. HALEY, BARRINGTON, N.H." BY: FREDERICK E. DREW ASSOCIATES DATED: MARCH 1984 S.C.R.D. PLAN #22-140
- "PLAN OF LAND DONALD M. MOODIE, BARRINGTON, N.H." BY: FREDERICK E. DREW ASSOCIATES DATED: DECEMBER 1983 S.C.R.D. PLAN #22-141
- "REVISED BOUNDARY PLAN PATRICK LAVOIE, DOUGLAS CAMPBELL, STEVEN LENZI, BRIAN LENZI, BARRINGTON, N.H." BY: FREDERICK E. DREW ASSOCIATES DATED: SEPTEMBER 1986 S.C.R.D. PLAN #64-19
- "REVISED BOUNDARY PLAN WALDRON B. HALEY, BARRINGTON, N.H." BY: FREDERICK E. DREW ASSOCIATES DATED: MAY 1985 S.C.R.D. PLAN #28-4
- "FINAL PLAN ROWELL & TIEDEMANN SUBDIVISION, BARRINGTON, N.H." BY: FREDERICK E. DREW ASSOCIATES DATED: AUGUST 1974 S.C.R.D. PLAN #34, POCKET #9, FOLDER #3
- "REVISED BOUNDARY PLAN AND LOTS 18, 19, AND 20, ROWELL SUBDIVISION" BY: FREDERICK E. DREW ASSOCIATES DATED: JUNE 1977 S.C.R.D. PLAN #17A-165
- "SUBDIVISION PLAN WALDRON B. HALEY & OLEVA WATSON" BY: ORMS/DREW, LLC DATED: OCTOBER 1999 S.C.R.D. PLAN #57-73
- "BOUNDARY ADJUSTMENT PLAN, BARRINGTON, STRAFFORD COUNTY, NEW HAMPSHIRE, PREPARED FOR WALDRON B. HALEY & OLEVA WATSON, MICHAEL J. DAVIS REALTY, LLC AND CHAPEL OF NATIVITY" BY: ORMS/DREW, LLC DATED: JANUARY 10, 2004 S.C.R.D. PLAN #76-30
- "RESEARCH PLAN OF S.W. END LOTS 92-95, BARRINGTON NH" BY: F.E. DREW DATED: 1972 ON FILE AT THIS OFFICE
- "A PLAN OF EDNA SMITH PROPERTY, BARRINGTON, N.H." BY: F.E. DREW DATED: JULY 1972 ON FILE AT THIS OFFICE

JURISDICTIONAL WETLANDS WERE DELINEATED BY DEIDRA BENJAMIN CWS IN SEPTEMBER OF 2017 AND REVIEWED IN THE SUMMER OF 2022 UTILIZING THE FOLLOWING STANDARDS:

- FIELD INDICATORS OF HYDRIC SOILS IN THE UNITED STATES, VERSION 7.0 2010. L.J. VASILAS, G.W. HURT, AND C.V. MOELLE (EDS.), UNITED STATES DEPARTMENT OF AGRICULTURE, NATURAL RESOURCES CONSERVATION SERVICE, IN COOPERATION WITH THE NATIONAL TECHNICAL COMMITTEE FOR HYDRIC SOILS.
- FIELD INDICATORS FOR IDENTIFYING HYDRIC SOILS IN NEW ENGLAND, VERSION 3, APRIL 2004, NEMIPCC WETLANDS WORKGROUP, WILMINGTON, MA 01897.
- NORTH AMERICAN DIGITAL FLORA: NATIONAL WETLAND PLANT LIST, VERSION 2.1.0 (HTTP://WETLAND_PLANTS.USACE.ARMY.MIL), U.S. ARMY CORPS OF ENGINEERS, ENGINEER RESEARCH AND DEVELOPMENT CENTER, COLD REGIONS RESEARCH AND ENGINEERING LABORATORY, HANOVER, NH, AND BONAP, CHAPEN HILL.
- STATE OF NEW HAMPSHIRE 2014 WETLAND PLANT LIST, LICHVAR, R.W., M. BUTTERWICH, N.C. MELVIN, AND W.N. KIRCHNER, 2014, THE NATIONAL WETLAND PLANT LIST: 2014 UPDATE OF WETLAND RATINGS. PHYTONOURN 2014-411-42.
- CORPS OF ENGINEERS WETLANDS DELINEATION MANUAL, JANUARY 1987, WETLANDS RESEARCH PROGRAM TECHNICAL REPORT Y-87-1.
- REGIONAL SUPPLEMENT TO THE CORPS OF ENGINEERS WETLAND DELINEATION MANUAL: NORTHCENTRAL AND NORTHEAST REGION, JANUARY 2012, VERSION 2, U.S. ARMY CORPS OF ENGINEERS, ENVIRONMENTAL LABORATORY ERDC/EL TR-12-1.
- CLASSIFICATION OF WETLANDS AND DEEPWATER HABITATS OF THE UNITED STATES, DECEMBER 1979, L. COWARDIN, V. CARTER, F. GOLET, AND E. LAROE, US DEPARTMENT OF THE INTERIOR, FISH AND WILDLIFE SERVICE, FWS/OBS-79/31.

NOTES:

- OWNER: TSB CONSTRUCTION LLC 44 MERRYFIELD LANE HAMPSHIRE, NH 03826
- TAX MAP 234, LOT 25-1
- LOT AREA: 411,188 Sq. Ft., 9.44 Ac. TOTAL UPLAND AREA: 411,188 Sq.Ft., 9.44 Ac.
- S.C.R.D. BOOK 4467, PAGE 985
- ZONING: VILLAGE DISTRICT SETBACKS: FRONT - 40.0' SIDE - 30.0' REAR - 30.0' WETLANDS - 50.0' IF OVER 3,000 Sq. Ft. MIN. LOT SIZE - 80,000 Sq. Ft. MIN. LOT FRONTAGE - 200' MIN. ELDG. HEIGHT - 35' MAX. LOT COVERAGE - 40%
- THE INTENT OF THIS PLAN IS TO SHOW THE PROPOSED SUBDIVISION OF TAX MAP 234, LOT 25-1, AS SHOWN, INTO 3 INDIVIDUAL LOTS. THIS IS A MULTI SHEET PLAN SET. SHEET 5 IS THE SUBDIVISION SHEET, SHEET 6 IS THE EASEMENT SHEET, BOTH ARE TO BE RECORDED. SHEET 7 SHOWS TOPOGRAPHY WITH THE REMAINING SHEETS PROVIDING ENGINEERING DETAIL FOR CONSTRUCTION PURPOSES. THE ENTIRE PLAN SET CAN BE FOUND AT THE OFFICE OF BERRY SURVEYING & ENGINEERING AND AT THE TOWN OF BARRINGTON PLANNING OFFICE.
- I HEREBY CERTIFY THAT, TO THE BEST OF MY KNOWLEDGE AND BELIEF, PART OF THIS PARCEL DOES FALL WITHIN THE FLOOD PLAIN FLOOD HAZARD REF.: FEMA COMMUNITY # - 330176, MAP # - 3301760285D, DATED: MAY 17, 2005.
- VERTICAL DATUM BASED ON USGS NAVD83 ELEVATIONS. HORIZONTAL COORDINATES BASED ON NAD83. COORDINATES GATHERED USING TOPCON HIPER SR SURVEY GRADE GPS RECEIVERS.
- PROPERTY LINE INFORMATION HAS BEEN OBTAINED FROM A SURVEY PERFORMED BY BERRY SURVEYING & ENGINEERING IN JULY 2017 WITH AN ERROR OF CLOSURE GREATER THAN 1 IN 10,000.
- IF, DURING CONSTRUCTION, IT BECOMES APPARENT THAT DEFICIENCIES EXIST IN THE APPROVED DESIGN DRAWINGS, THE OWNER SHALL BE REQUIRED TO CORRECT THE DEFICIENCIES TO MEET THE REQUIREMENTS OF THE REGULATIONS AT NO EXPENSE TO THE TOWN.

N/F WILLIAM & HEIDI VOLTZ
29 MEETINGHOUSE ROAD
BARRINGTON, NH 03825
S.C.R.D. BOOK 4933, PAGE 751
TAX MAP 234, LOT 26-6

N/F WILLIAM & HEIDI VOLTZ
P.O. BOX 538
BARRINGTON, NH 03825
S.C.R.D. BOOK 4940, PAGE 808
TAX MAP 234, LOT 26-4

N/F BRIAN M & SUSAN E FRATONI
13 MEETINGHOUSE ROAD
BARRINGTON, NH 03825
S.C.R.D. BOOK 4947, PAGE 012
TAX MAP 234, LOT 26-3

N/F PUBLIC SERVICE OF NH
P.O. BOX 270
HARTFORD, CT 06141-270
S.C.R.D. BOOK 3853, PAGE 530
TAX MAP 234, LOT 23

N/F JOANN HUBER & TIMOTHY CUNNINGHAM
14 SMOKE ST
BARRINGTON, NH 03825
S.C.R.D. BOOK 4890, PAGE 922
TAX MAP 234, LOT 24

N/F OAK HILL REALTY LLC
180 CLARK ROAD
WOLFEBORO, NH 03894
S.C.R.D. BOOK 4726, PAGE 341
TAX MAP 234, LOT 26-2

N/F SMOKE STREET LLC
8 HILLSIDE LANE
HEMAMARKET, NH 03857
S.C.R.D. BOOK 4694, PAGE 971
TAX MAP 234, LOT 28

TAX MAP 234
LOT 25-9
TOTAL LOT AREA
217,004 Sq.Ft., 4.98 Ac.
TOTAL UPLAND AREA
217,004 Sq.Ft., 4.98 Ac.
TOTAL AREA EXCLUSIVE OF "NECK"
212,580 Sq.Ft., 4.88 Ac.

TAX MAP 234
LOT 25-8
TOTAL LOT AREA
91,077 Sq.Ft., 2.09 Ac.
TOTAL UPLAND AREA
91,077 Sq.Ft., 2.09 Ac.
TOTAL AREA EXCLUSIVE OF "NECK"
84,780 Sq.Ft., 1.95 Ac.

TAX MAP 234
LOT 26-1
TOTAL LOT AREA
103,106 Sq.Ft., 2.37 Ac.
TOTAL UPLAND AREA
103,106 Sq.Ft., 2.37 Ac.

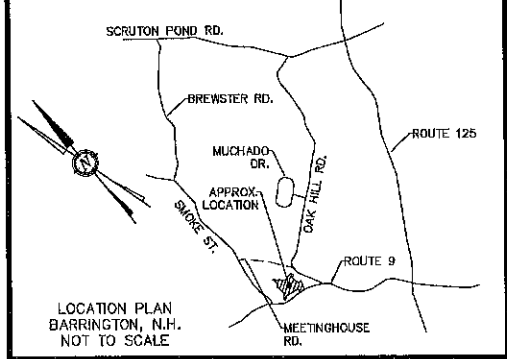
N/F THOMAS E. KENT
757 FRANKLIN PIERCE HWY.
BARRINGTON, NH 03825
S.C.R.D. BOOK 4482, PAGE 315
TAX MAP 234, LOT 28

N/F LISA BOUGHARD
761 FRANKLIN PIERCE HWY.
BARRINGTON, NH 03825
S.C.R.D. BOOK 4764, PAGE 474
TAX MAP 234, LOT 27

N/F GERALD J. & PRISCILLA J. PINZARI
175 FAMILY REVOCABLE TRUST
746 FRANKLIN PIERCE HWY.
BARRINGTON, NH 03825-3529
S.C.R.D. BOOK 4327, PAGE 815
TAX MAP 234, LOT 83

N/F KELLY A. & JARED B. MARINEL
739 FRANKLIN PIERCE HWY.
BARRINGTON, NH 03825
S.C.R.D. BOOK 4969, PAGE 759
TAX MAP 234, LOT 82

- LEGEND:**
- 3/4" REBAR W/ D CAP (TBS)
 - DRILL HOLE (END OR SET)
 - IRON PIPE (FND)
 - "T" CHISEL INTO STONE (FND)
 - IRON BOUND (FND)
 - UTILITY POLE / GUY WIRE
 - APPROXIMATE ABUTTING PROPERTY LINE
 - PROPOSED BOUNDARY LINE
 - STONE WALL
 - BUILDING SETBACK LINE
 - POORLY DRAINED JURISDICTIONAL WETLANDS
 - 50' WETLAND BUFFER
 - STRAFFORD COUNTY REGISTRY OF DEEDS
 - TYPICAL
 - FND
 - TBS
 - TO BE SET



NOTES CONT.:

- REQUIRED EROSION CONTROL MEASURES SHALL BE INSTALLED PRIOR TO ANY DISTURBANCE OF THE SITE'S SURFACE AREA AND SHALL BE MAINTAINED THROUGH THE COMPLETION OF ALL CONSTRUCTION ACTIVITIES. IF, DURING CONSTRUCTION, IT BECOMES APPARENT THAT ADDITIONAL EROSION CONTROL MEASURES ARE REQUIRED TO STOP ANY EROSION ON THE CONSTRUCTION SITE DUE TO ACTUAL SITE CONDITIONS, THE OWNER SHALL BE REQUIRED TO INSTALL THE NECESSARY EROSION PROTECTION AT NO EXPENSE TO THE TOWN.
- ALL MATERIALS AND METHODS OF CONSTRUCTION SHALL CONFORM TO TOWN REGULATIONS AND THE LATEST EDITION OF THE NEW HAMPSHIRE DEPARTMENT OF TRANSPORTATIONS STANDARD SPECIFICATIONS FOR ROAD AND BRIDGE CONSTRUCTION
- IN ACCORDANCE WITH TOWN REGULATIONS AND RSA 676:13, ALL IMPROVEMENTS SPECIFIED ON THESE SITE PLANS SHALL BE CONSTRUCTED, COMPLETED, INSPECTED AND APPROVED BY THE TOWN OF BARRINGTON PRIOR TO THE ISSUANCE OF A CERTIFICATE OF OCCUPANCY.
- NHDES SUBDIVISION APPROVAL WILL BE REQUIRED FOR LOTS 25-1, 26-B, & 26-9; PENDING
- NO PORTION OF ANY NEW DRIVEWAY MAY BE STEEPER THAN 10% GRADE. SEE DRIVEWAY DESIGN PLANS ENCLOSED HEREWITH.
- THERE WERE NO CEMETERIES OBSERVED ON THE PARCEL WHEN THE FIELD WORK WAS TAKING PLACE IN SPRING OF 2017.
- THE PROJECT REQUIRES AN MHDDOT PERMIT (PENDING)
- ON SEPTEMBER 21, 2022 THE ZONING BOARD OF ADJUSTMENT GRANTED THE FOLLOWING RELIEF:
CASE# 234-25-1-V-22-SOPECEK. TO ALLOWED A SHARED DRIVEWAY NOT OVER THE INTENDED LOT FRONTAGE.
CASE# 234-25-1-V-22-VAR. TO ALLOW THE FRONTAGE ON LOT 25-1 TO BE LESS THAN THE REQUIRED DIMENSIONAL STANDARDS.

JURISDICTIONAL WETLANDS
LESS THAN 3,000 Sq.Ft.
NOT A VERNAL POOL

JURISDICTIONAL WETLANDS
LESS THAN 3,000 Sq.Ft.
NOT A VERNAL POOL

RECEIVED

FOR TOWN APPROVAL PURPOSES:

OCT 12 2022

USE OFFICE

THE SUBDIVISION REGULATIONS OF THE TOWN OF BARRINGTON ARE A PART OF THIS PLAN, AND APPROVAL OF THIS PLAN IS CONTINGENT UPON COMPLETION OF ALL REQUIREMENTS OF SAID SUBDIVISION REGULATIONS, EXCEPTING ONLY MODIFICATIONS MADE IN WRITING BY THE BOARD AND ATTACHED HERETO.

I CERTIFY THAT THIS PLAT EXCEEDS THE MINIMUM REQUIREMENT FOR ACCURACY AND COMPLETENESS OF THE STATE OF N.H. AND OF THE TOWN OF BARRINGTON, N.H. -1:10,000-

KENNETH A. BERRY L.L.S. 805 DATE

REVISION	DATE	DESCRIPTION

SUBDIVISION PLAN
LAND OF
TSB CONSTRUCTION LLC
FRANKLIN PIERCE HIGHWAY
BARRINGTON, NH
TAX MAP 234, LOT 25-1

BERRY SURVEYING & ENGINEERING

335 SECOND CROWN POINT ROAD
BARRINGTON, NH 03825 (603)332-2863

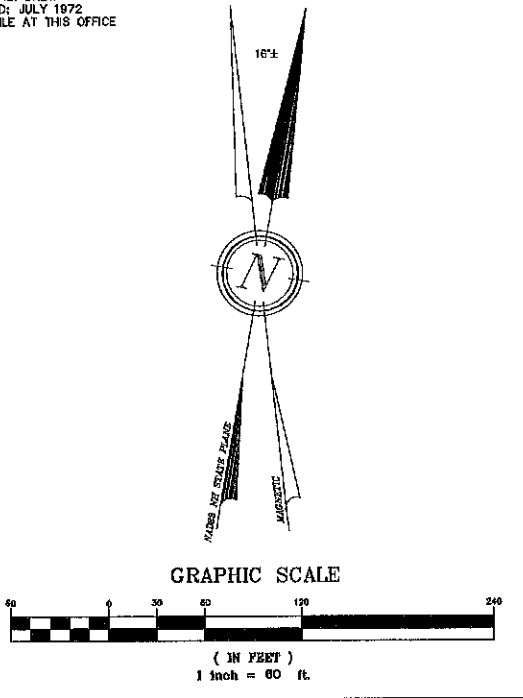
SCALE: 1 IN. EQUALS 60 FT.

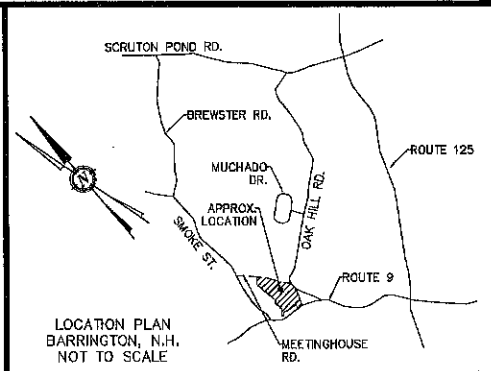
DATE: AUGUST 29, 2022

FILE NO.: DB 2022 - 051

DRAFT

SHEET 5 OF 22





NOTES CONT:

- 11.) REQUIRED EROSION CONTROL MEASURES SHALL BE INSTALLED PRIOR TO ANY DISTURBANCE OF THE SITE'S SURFACE AREA AND SHALL BE MAINTAINED THROUGH THE COMPLETION OF ALL CONSTRUCTION ACTIVITIES. IF, DURING CONSTRUCTION, IT BECOMES APPARENT THAT ADDITIONAL EROSION CONTROL MEASURES ARE REQUIRED TO STOP ANY EROSION ON THE CONSTRUCTION SITE DUE TO ACTUAL SITE CONDITIONS, THE OWNER SHALL BE REQUIRED TO INSTALL THE NECESSARY EROSION PROTECTION AT NO EXPENSE TO THE TOWN.
- 12.) ALL MATERIALS AND METHODS OF CONSTRUCTION SHALL CONFORM TO TOWN REGULATIONS AND THE LATEST EDITION OF THE NEW HAMPSHIRE DEPARTMENT OF TRANSPORTATION'S STANDARD SPECIFICATIONS FOR ROAD AND BRIDGE CONSTRUCTION.
- 13.) IN ACCORDANCE WITH TOWN REGULATIONS AND RSA 676:13, ALL IMPROVEMENTS SPECIFIED ON THESE SITE PLANS SHALL BE CONSTRUCTED, COMPLETED, INSPECTED AND APPROVED BY THE TOWN OF BARRINGTON PRIOR TO THE ISSUANCE OF A CERTIFICATE OF OCCUPANCY.
- 14.) NHDES SUBDIVISION APPROVAL WILL BE REQUIRED FOR LOT 25 & LOT 26-2 THROUGH 25-7
- 15.) NO PORTION OF ANY NEW DRIVEWAY MAY BE STEEPER THAN 10% GRADE. SEE DRIVEWAY DESIGN PLANS
- 16.) THERE WERE NO CEMETERIES OBSERVED ON THE PARCEL WHEN THE FIELD WORK WAS TAKING PLACE.
- 17.) THIS SUBDIVISION IS SUBJECT TO THE CLASS V UPGRADE REQUIREMENT OF MEETINGHOUSE ROAD. SEE CORRESPONDING PLAN SET.

JURISDICTIONAL WETLANDS WERE DELINEATED BY CYNTHIA BALCIUS OF STONEY RIDGE ENVIRONMENTAL LLC IN SEPTEMBER OF 2017 UTILIZING THE FOLLOWING STANDARDS:

- 1) FIELD INDICATORS OF HYDRIC SOILS IN THE UNITED STATES, VERSION 7.0. 2010. L.M. VASILAS, G.W. HURT, AND C.V. NOBLE (EDS.), UNITED STATES DEPARTMENT OF AGRICULTURE, NATURAL RESOURCES CONSERVATION SERVICE, IN COOPERATION WITH THE NATIONAL TECHNICAL COMMITTEE FOR HYDRIC SOILS.
- 2) FIELD INDICATORS FOR IDENTIFYING HYDRIC SOILS IN NEW ENGLAND, VERSION 3. APRIL 2004. NEWHCC WETLANDS WORKGROUP, WILMINGTON, MA 01887.
- 3) NORTH AMERICAN DIGITAL FLORA: NATIONAL WETLAND PLANT LIST, VERSION 2.1.0 (HTTP://WETLAND_PLANTS.USACE.ARMY.MIL). U.S. ARMY CORPS OF ENGINEERS, ENGINEER RESEARCH AND DEVELOPMENT CENTER, COLD REGIONS RESEARCH AND ENGINEERING LABORATORY, HANOVER, NH, AND BONAP, CHAPEN HILL.
- 4) STATE OF NEW HAMPSHIRE 2014 WETLAND PLANT LIST. LICHVAR, R.W., M. BUTTERWICH, N.O. MELVIN, AND W.M. KIRCHNER, 2014. THE NATIONAL WETLAND PLANT LIST: 2014 UPDATE OF WETLAND RATINGS. PHYTONELRON 2014-41:1-42.
- 5) CORPS OF ENGINEERS WETLANDS DELINEATION MANUAL, JANUARY 1987. WETLANDS RESEARCH PROGRAM TECHNICAL REPORT 1-87-1.
- 6) REGIONAL SUPPLEMENT TO THE CORPS OF ENGINEERS WETLAND DELINEATION MANUAL: NORTH-CENTRAL AND NORTHEAST REGION, JANUARY 2012, VERSION 2. U.S. ARMY CORPS OF ENGINEERS, ENVIRONMENTAL LABORATORY ERDC/EL TR-12-1.
- 7) CLASSIFICATION OF WETLANDS AND DEEPWATER HABITATS OF THE UNITED STATES, DECEMBER 1978. L. CONARD, V. CARTER, F. COLE, AND E. LAROE. US DEPARTMENT OF THE INTERIOR, FISH AND WILDLIFE SERVICE. FWS/OBS-79/31.

REVISION	DATE	DESCRIPTION

SUBDIVISION TOPOGRAPHY PLAN
 LAND OF
 TSB CONSTRUCTION LLC
 FRANKLIN PIERCE HIGHWAY
 BARRINGTON, NH
 TAX MAP 284, LOT 25-1

BERRY SURVEYING & ENGINEERING
 335 SECOND CROWN POINT ROAD
 BARRINGTON, NH 03825 (603)332-2863
 SCALE: 1 IN. EQUALS 60 FT.
 DATE: AUGUST 29, 2022
 FILE NO.: DB 2022 - 051

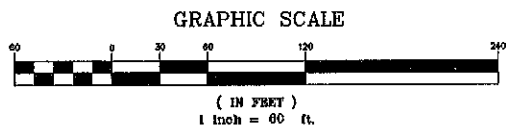
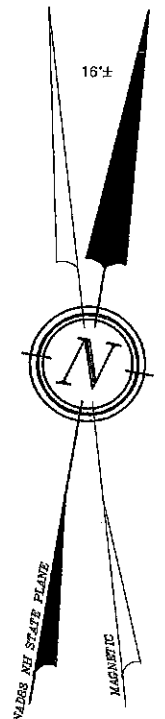


NOTES:

- 1.) OWNER: TSB CONSTRUCTION LLC
44 MERRYFIELD LANE
HAMPSHIRE, NH 03828
- 2.) TAX MAP 234, LOT 25-1
- 3.) LOT AREA: 411,188 Sq. Ft., 9.44 Ac.
TOTAL UPLAND AREA: 411,188 Sq.Ft., 9.44 Ac.
- 4.) S.C.R.D. BOOK 4467, PAGE 965
- 5.) ZONING: VILLAGE DISTRICT
SETBACKS:
FRONT - 40.0'
SIDE - 30.0'
REAR - 30.0'
WETLANDS - 50.0' IF OVER 3,000 Sq. Ft.
MIN. LOT SIZE - 80,000 Sq. Ft.
MIN. LOT FRONTAGE - 200'
MIN. BLDG. HEIGHT - 35'
MAX. LOT COVERAGE - 40%
- 6.) THE INTENT OF THIS PLAN IS TO SHOW THE PROPOSED SUBDIVISION OF TAX MAP 234, LOT 25-1, AS SHOWN, INTO 3 INDIVIDUAL LOTS. THIS IS A MULTI SHEET PLAN SET. SHEET 5 IS THE SUBDIVISION SHEET, SHEET 6 IS THE EASEMENT SHEET, BOTH ARE TO BE RECORDED. SHEET 7 SHOWS TOPOGRAPHY WITH THE REMAINING SHEETS PROVIDING ENGINEERING DETAIL FOR CONSTRUCTION PURPOSES. THE ENTIRE PLAN SET CAN BE FOUND AT THE OFFICE OF BERRY SURVEYING & ENGINEERING AND AT THE TOWN OF BARRINGTON PLANNING OFFICE.
- 7.) I HEREBY CERTIFY THAT, TO THE BEST OF MY KNOWLEDGE & BELIEF, PART OF THIS PARCEL DOES FALL WITHIN THE FLOOD PLAIN FLOOD HAZARD REF: FEMA COMMUNITY# - 330178, MAP# - 33017C02850, DATED: MAY 17, 2005.
- 8.) VERTICAL DATUM BASED ON USGS NAVD83 ELEVATIONS. HORIZONTAL COORDINATES BASED ON NAD83. COORDINATES GATHERED USING TOPCON HIPER SR SURVEY GRADE GPS RECEIVERS.
- 9.) PROPERTY LINE INFORMATION HAS BEEN OBTAINED FROM A SURVEY PERFORMED BY BERRY SURVEYING & ENGINEERING IN JULY 2017 WITH AN ERROR OF CLOSURE GREATER THAN 1 IN 10,000.
- 10.) IF, DURING CONSTRUCTION, IT BECOMES APPARENT THAT DEFICIENCIES EXIST IN THE APPROVED DESIGN DRAWINGS, THE OWNER SHALL BE REQUIRED TO CORRECT THE DEFICIENCIES TO MEET THE REQUIREMENTS OF THE REGULATIONS AT NO EXPENSE TO THE TOWN.

LEGEND:

- IRON BOUND (SET)
 - DRILL HOLE (FND OR SET)
 - IRON PIPE (FND)
 - CHSLED INTO STONE
 - IRON BOUND (FND)
 - UTILITY POLE / GUY WIRE
 - WELL
- APPROXIMATE ABUTTING PROPERTY LINE
 - - - PROPOSED BOUNDARY LINE
 ○○○○○ STONE WALL
 - - - BUILDING SETBACK LINE
 - - - POORLY DRAINED JURISDICTIONAL WETLANDS
 - - - 50' WETLAND BUFFER
 - - - EXISTING CONTOUR MINOR
 - - - EXISTING CONTOUR MAJOR
 S.C.R.D. TYP. STRAFFORD COUNTY REGISTRY OF DEEDS
 FND TYPICAL
 FND FOUND
 TBS TO BE SET



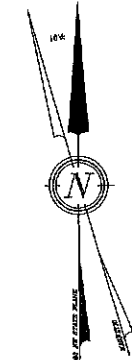
I CERTIFY THAT THIS PLAT EXCEEDS THE MINIMUM REQUIREMENT FOR ACCURACY AND COMPLETENESS OF THE STATE OF N.H. AND OF THE TOWN OF BARRINGTON, N.H. -1:10,000-

KENNETH A. BERRY L.L.S. 805 DATE

RECEIVED FOR TOWN APPROVAL PURPOSES

OCT 12 2022

THE SUBDIVISION REGULATIONS OF THE TOWN OF BARRINGTON ARE A PART OF THIS PLAN, AND APPROVAL OF THIS PLAN IS CONTINGENT UPON COMPLETION OF ALL REQUIREMENTS OF SAID SUBDIVISION REGULATIONS, EXCEPTING ONLY MODIFICATIONS MADE IN WRITING BY THE BOARD AND ATTACHED HERETO.



GRAPHIC SCALE



(IN FEET)
1 inch = 20 ft.

REVISION	DATE	DESCRIPTION

GRADING PLAN OVERVIEW
 LAND OF
 TSB CONSTRUCTION LLC
 FRANKLIN PIERCE HIGHWAY / NH ROUTE 9
 BARRINGTON, NH
 TAX MAP 234, LOT 25-1

BERRY SURVEYING & ENGINEERING
 335 SECOND CROWN POINT ROAD
 BARRINGTON, NH 03825 (603) 332-2863
 SCALE : 1 IN. EQUALS 20 FT.
 DATE : OCTOBER 12, 2022
 FILE NO. : DB 2022 - 051

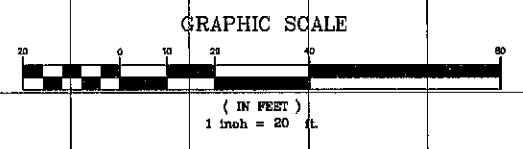
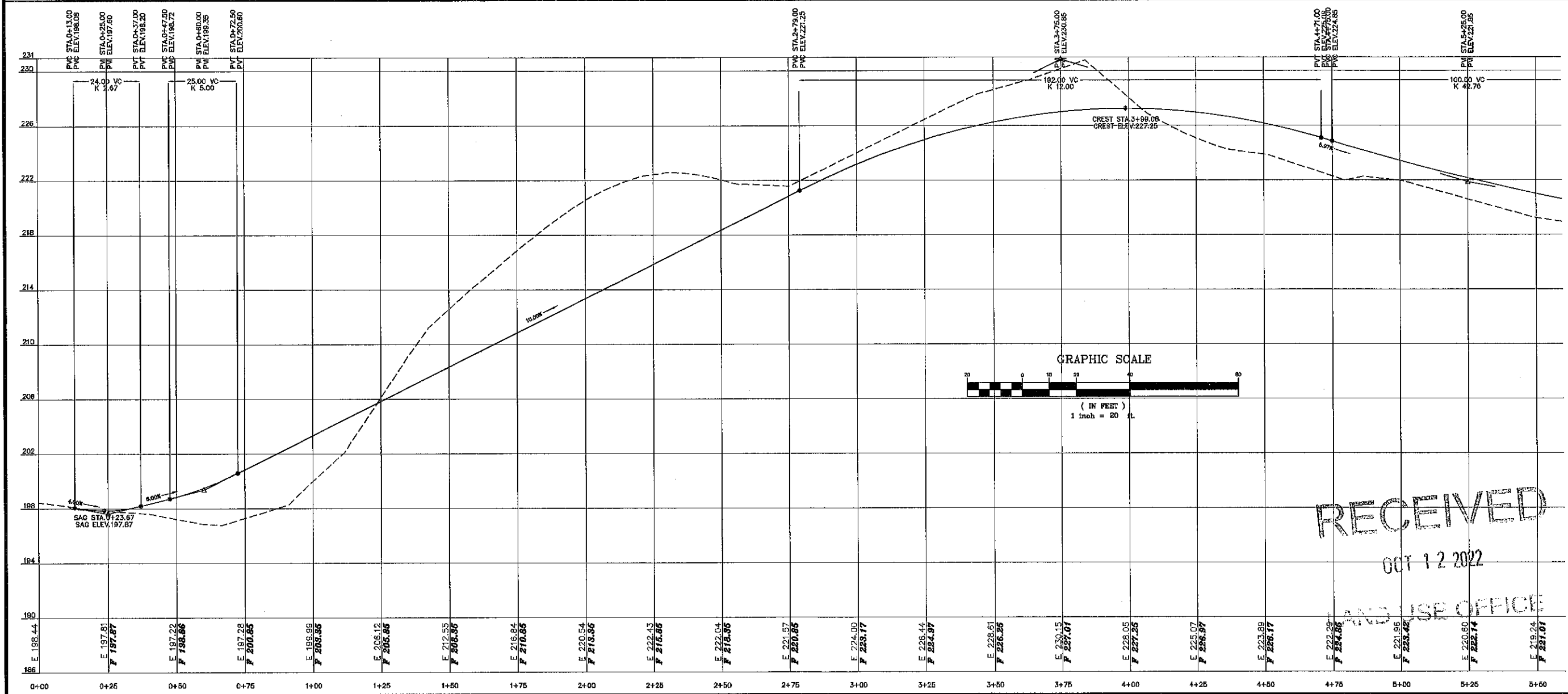
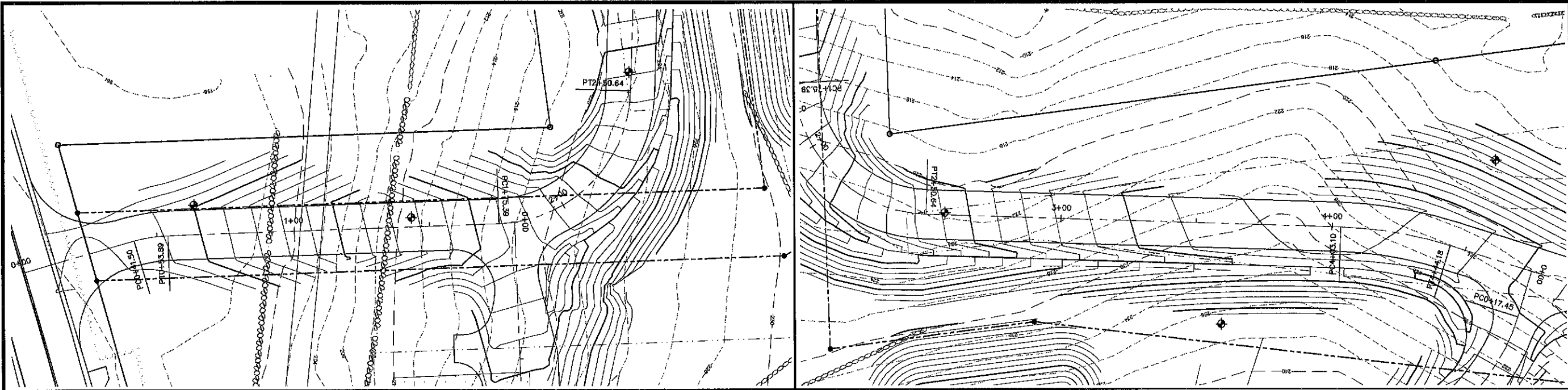
RECEIVED

PROPOSED AREA FOR STORMWATER FEATURE

OCT 17 2022

LAND USE OFFICE





RECEIVED

OCT 12 2022

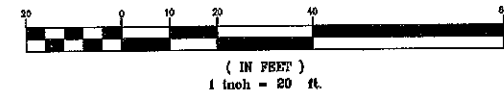
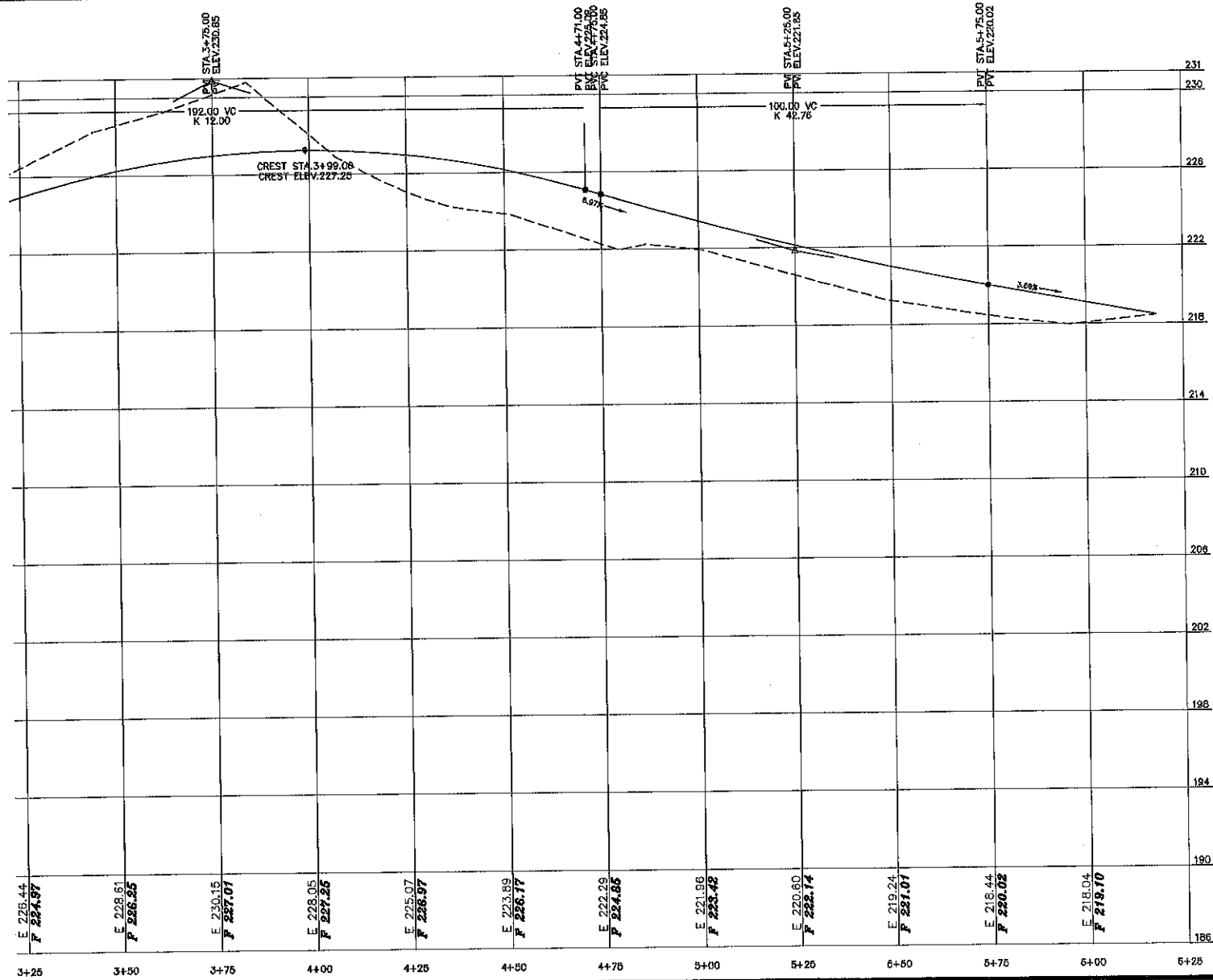
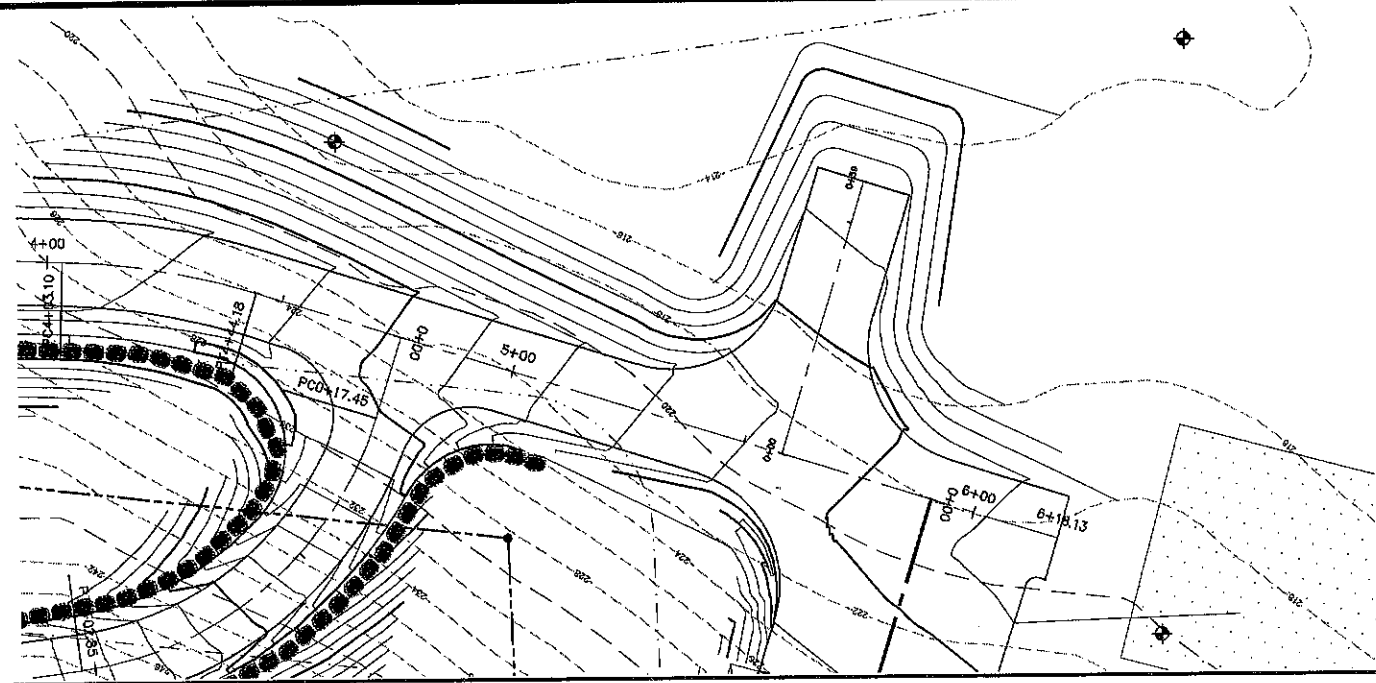
PLANNING & ENGINEERING OFFICE

REVISION	DATE	DESCRIPTION

PLAN AND PROFILE VIEW SHARED DRIVEWAY 0+00 - 5+50
 LAND OF
 TSB CONSTRUCTION LLC
 FRANKLIN PIERCE HIGHWAY /NH ROUTE 9
 BARRINGTON, NH
 TAX MAP 294, LOT 25-1

BERRY SURVEYING & ENGINEERING
 335 SECOND CROWN POINT ROAD
 BARRINGTON, NH 03825 (603)332-2863
 SCALE : 1 IN. EQUALS 20 FT.
 DATE : OCTOBER 12, 2022
 FILE NO. : DB 2022 - 051

DRAFT



RECEIVED

OCT 12 2022

LAND USE OFFICE

REVISION	DATE	DESCRIPTION

PLAN AND PROFILE VIEW SHARED DRIVEWAY 5+50 - END
 LAND OF
 TSB CONSTRUCTION LLC
 FRANKLIN PIERCE HIGHWAY /NH ROUTE 9
 BARRINGTON, NH
 TAX MAP 234, LOT 85-1

BERRY SURVEYING & ENGINEERING
 335 SECOND CROWN POINT ROAD
 BARRINGTON, NH 03825 (603)332-2863
 SCALE : 1 IN. EQUALS 20 FT.
 DATE : OCTOBER 12, 2022
 FILE NO. : DB 2022 - 051

