

BERRY SURVEYING & ENGINEERING
 335 SECOND CROWN POINT ROAD
 BARRINGTON, NH 03825 (603)332-2863
 SCALE : 1 IN. EQUALS 120 FT.
 DATE : JUNE 14, 2021
 FILE NO. : DB 2020 - 097

COLOR RENDERING OVERVIEW
 LAND OF
 DOVE DEVELOPMENT GROUP, LLC
 N.H. ROUTE 9 / FRANKLIN PIERCE HIGHWAY
 COMMUNITY WAY
 BARRINGTON, NH
TAX MAP 235 LOT 1-1 & MAP 235 LOT 3

REVISION	DATE	DESCRIPTION



EDGE OF POORLY DRAINED JURISDICTIONAL WETLANDS (TYP.) BY: JOHN P. HAYES III, CWS #18

50' WETLAND BUFFER

HIGH POINT DRIVE (PFT.)

EDGE OF POORLY DRAINED JURISDICTIONAL WETLANDS (TYP.) BY: JOHN P. HAYES III, CWS #18 LESS THAN 3,000 SQ.FT. NO BUFFER REQUIRED

RAIN GARDEN W/ INFILTRATION #107 (POND 107P)

EDGE OF POORLY DRAINED JURISDICTIONAL WETLANDS (TYP.) BY: JOHN P. HAYES III, CWS #18 LESS THAN 3,000 SQ.FT. NO BUFFER REQUIRED

RAIN GARDEN #109 (POND 109P)

RAIN GARDEN #105 (POND 105P)

RAIN GARDEN #106 (POND 106P)

RAIN GARDEN #108 (POND 108P)

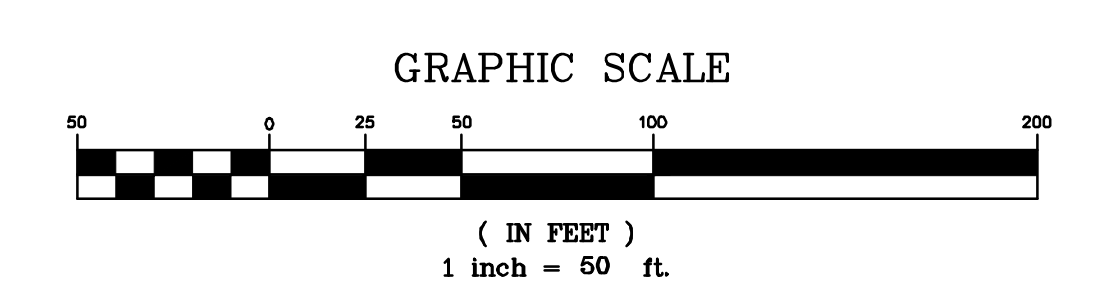
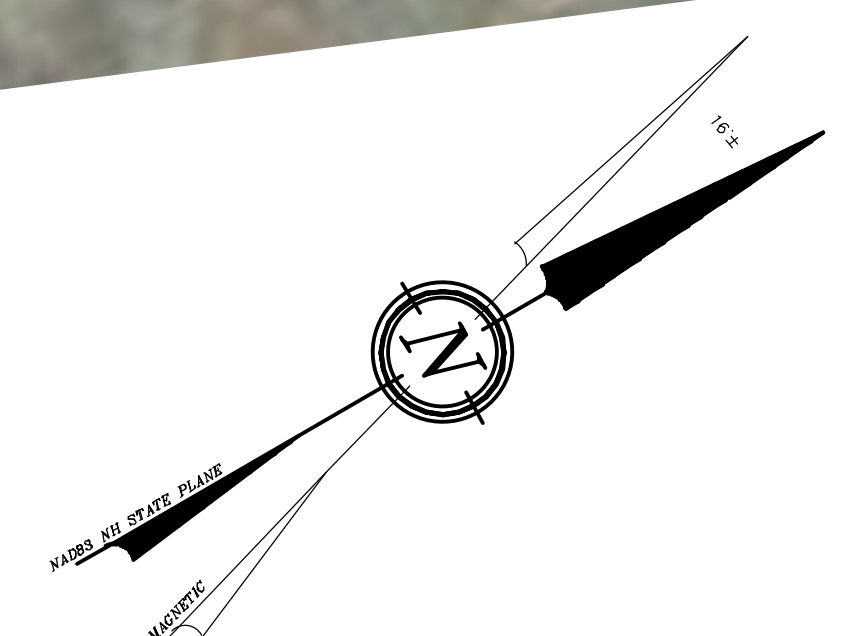
GRAVEL WETLAND #104 (POND 104P)

"NORTH POINT COMMON" MIXED USE BUILDING

COMMUNITY WAY

PROPOSED WELL PUMP HOUSE

PROPOSED WELL ACCESS TRAIL



BERRY SURVEYING & ENGINEERING
 335 SECOND CROWN POINT ROAD
 BARRINGTON, NH 03825 (603)332-2863
 SCALE : 1 IN. EQUALS 50 FT.
 DATE : JUNE 14, 2021
 FILE NO. : DB 2020 - 097

COLOR RENDERING
 LAND OF
 DOVE DEVELOPMENT GROUP, LLC
 N.H. ROUTE 9 / FRANKLIN PIERCE HIGHWAY
 COMMUNITY WAY
 BARRINGTON, NH
 TAX MAP 235 LOT 1-1 & MAP 235 LOT 3

REVISION	DATE	DESCRIPTION