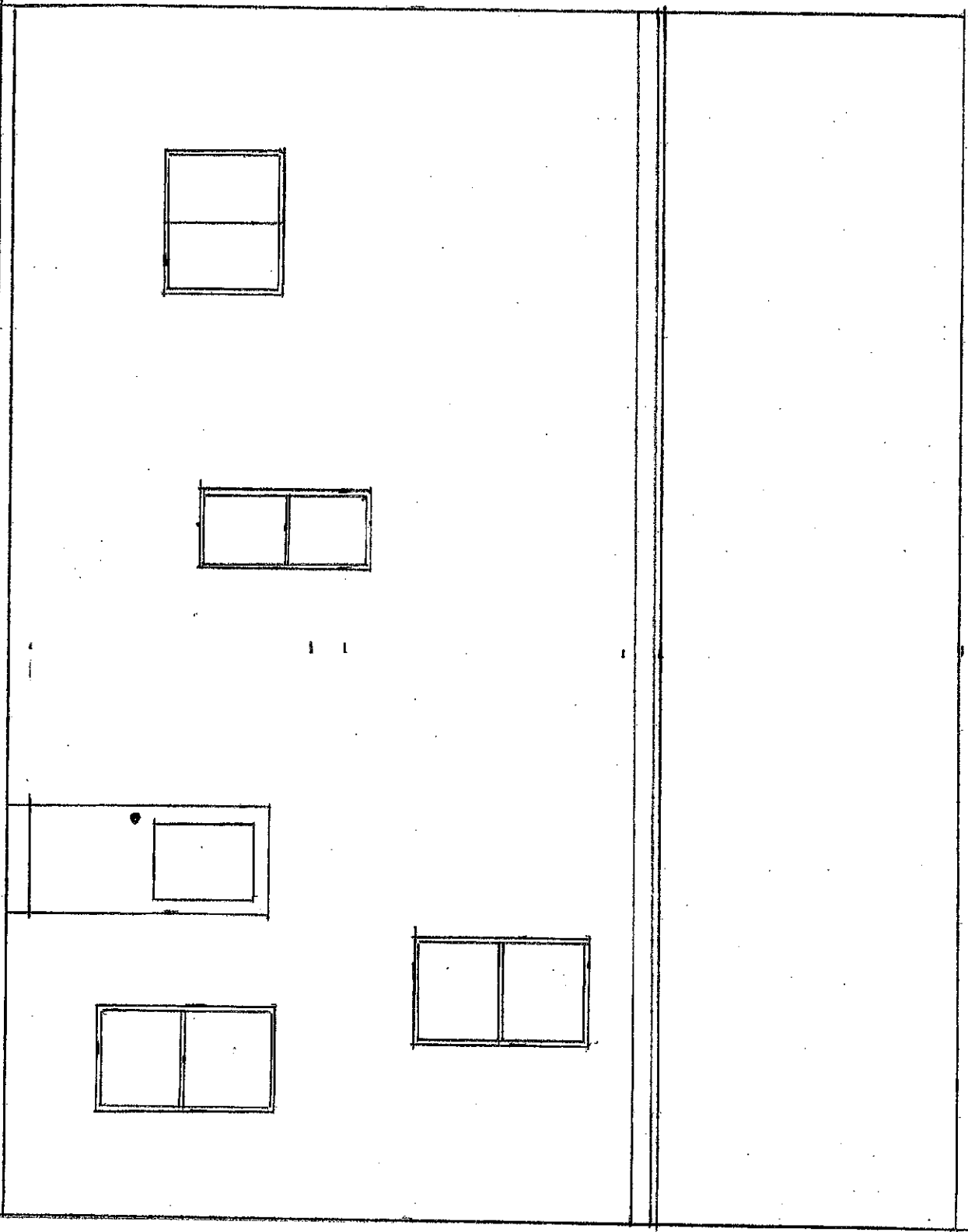


1/2" = 1'0"

FRONT ELEVATIONS

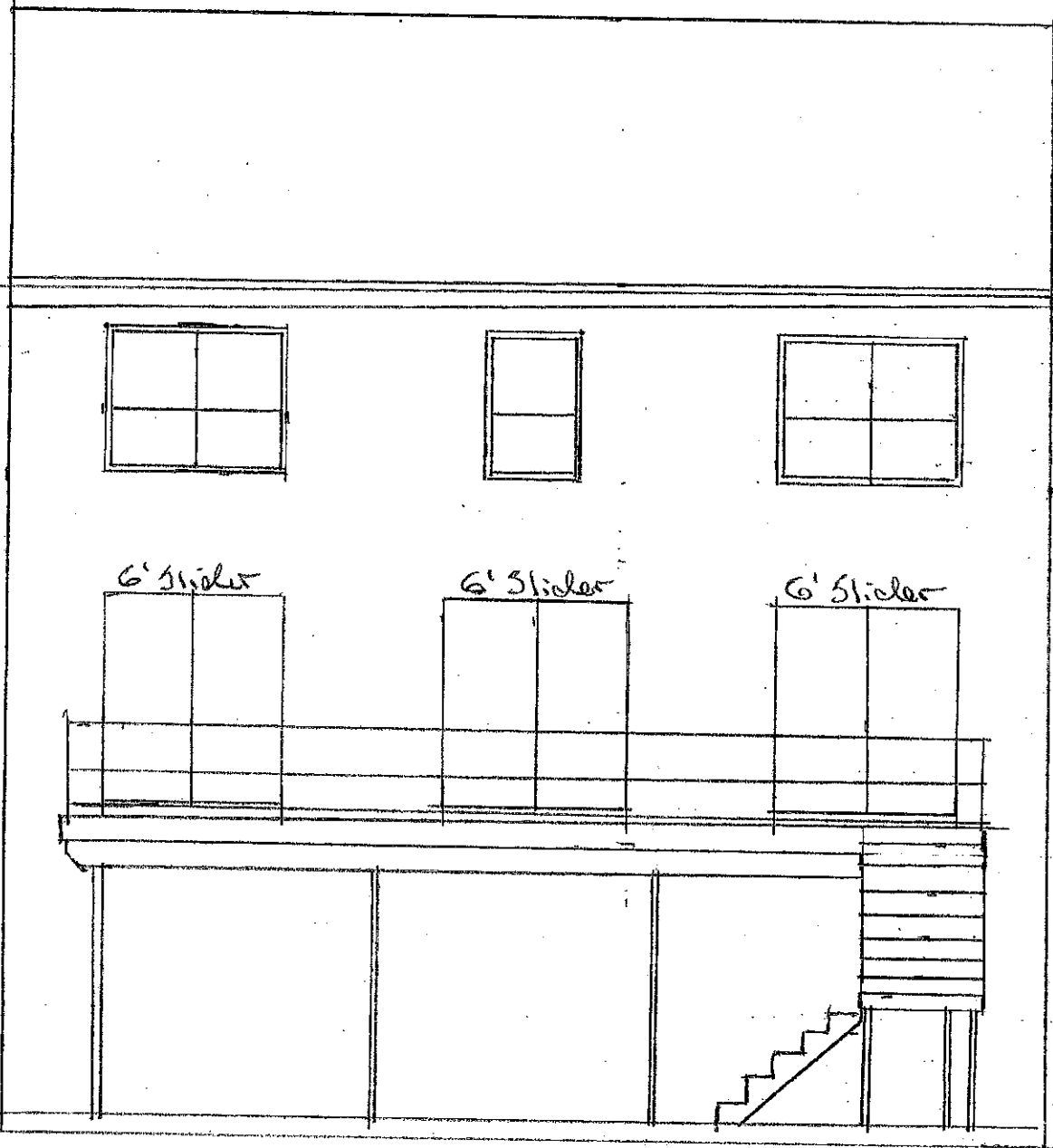


FIN Graders

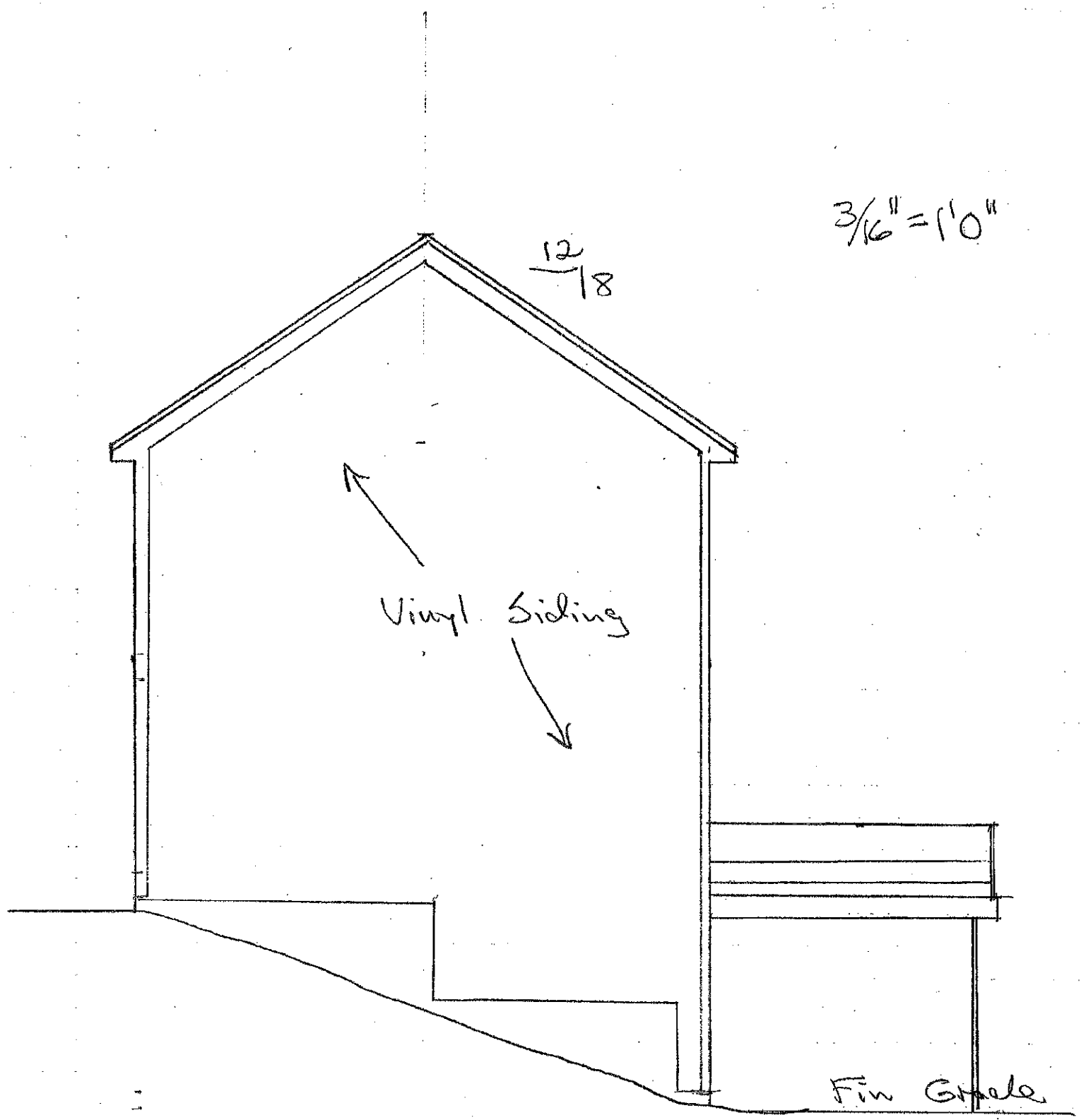
RECEIVED

AUG 24 2021

LAND USE OFFICE



REAR ELEVATION $\frac{3}{16}'' = 1'0''$



3/16" = 1'0"

12
—
18

Vinyl Siding

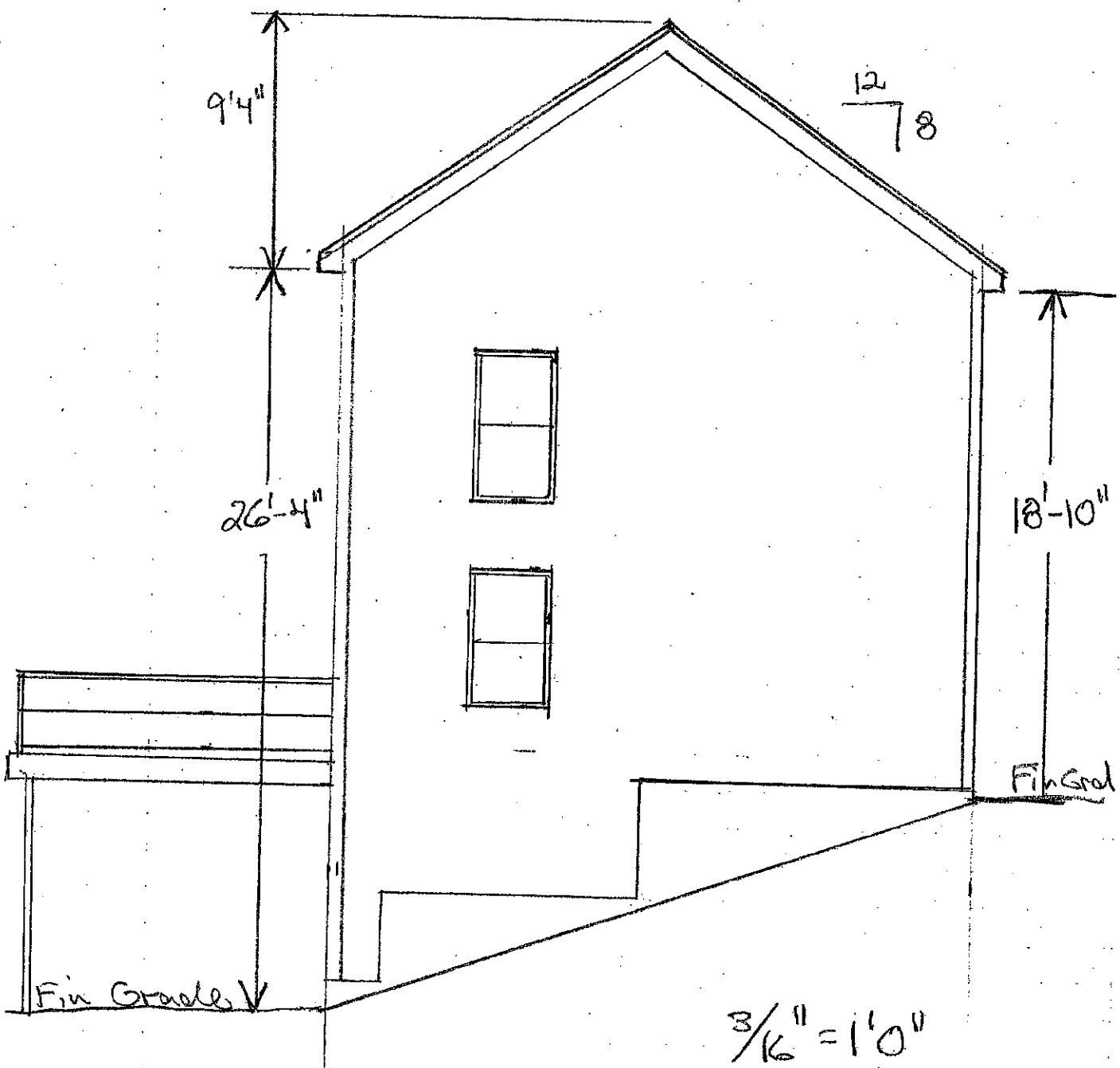
Fin Gable

RIGHT SIDE ELEVATION

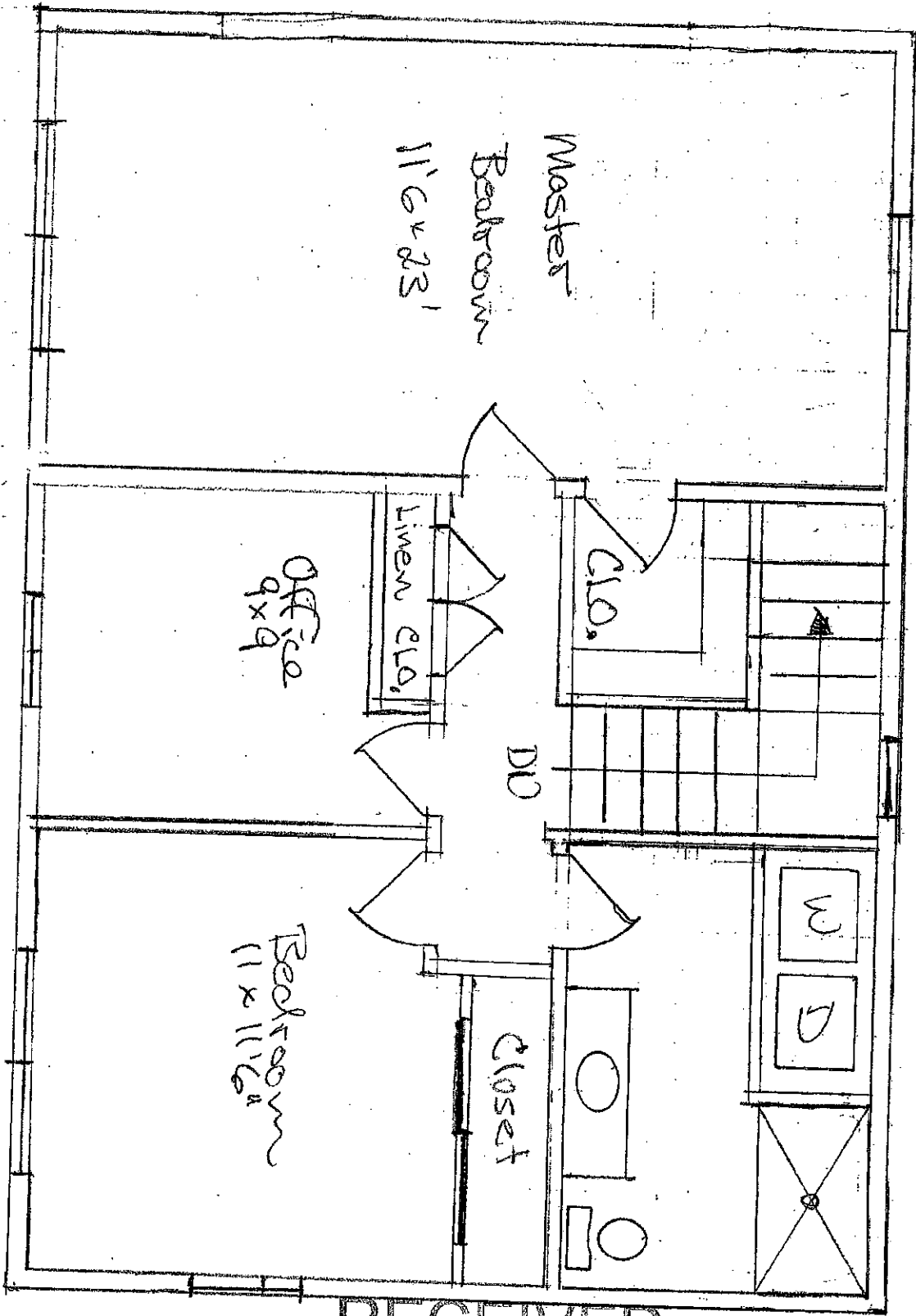
RECEIVED

AUG 24 2021

LAND USE OFFICE



LEFT SIDE ELEVATION



← LAKE →

2ND FLOOR

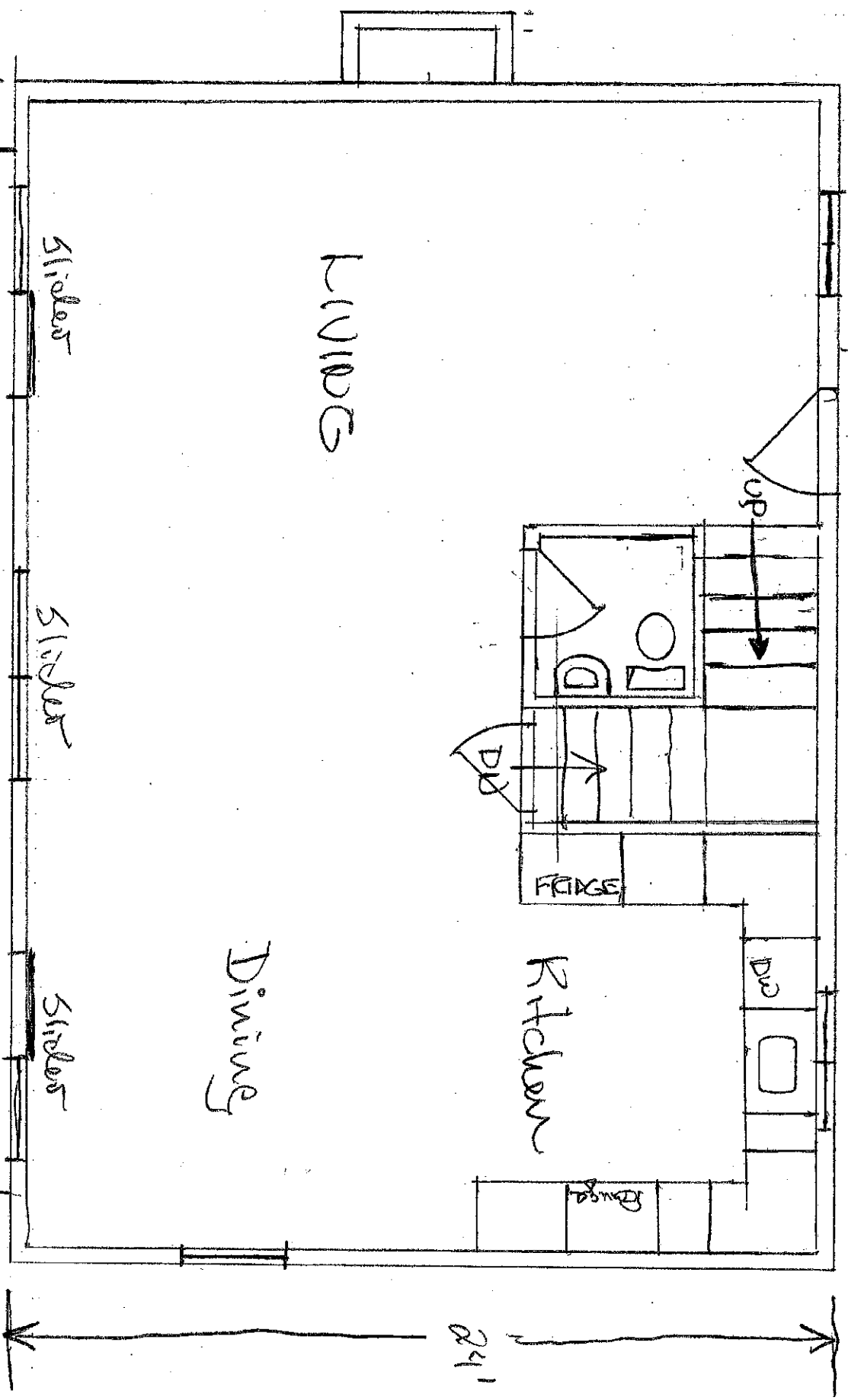
← 11'0" →

RECEIVED

AUG 24 2021

LAND USE OFFICE

1st FLOOR



LIVING

Dining

Kitchen

FRIDGE

UP

Sliders

Sliders

Sliders

34'

24'

DECK 30x12 4 110"

716 sq ft