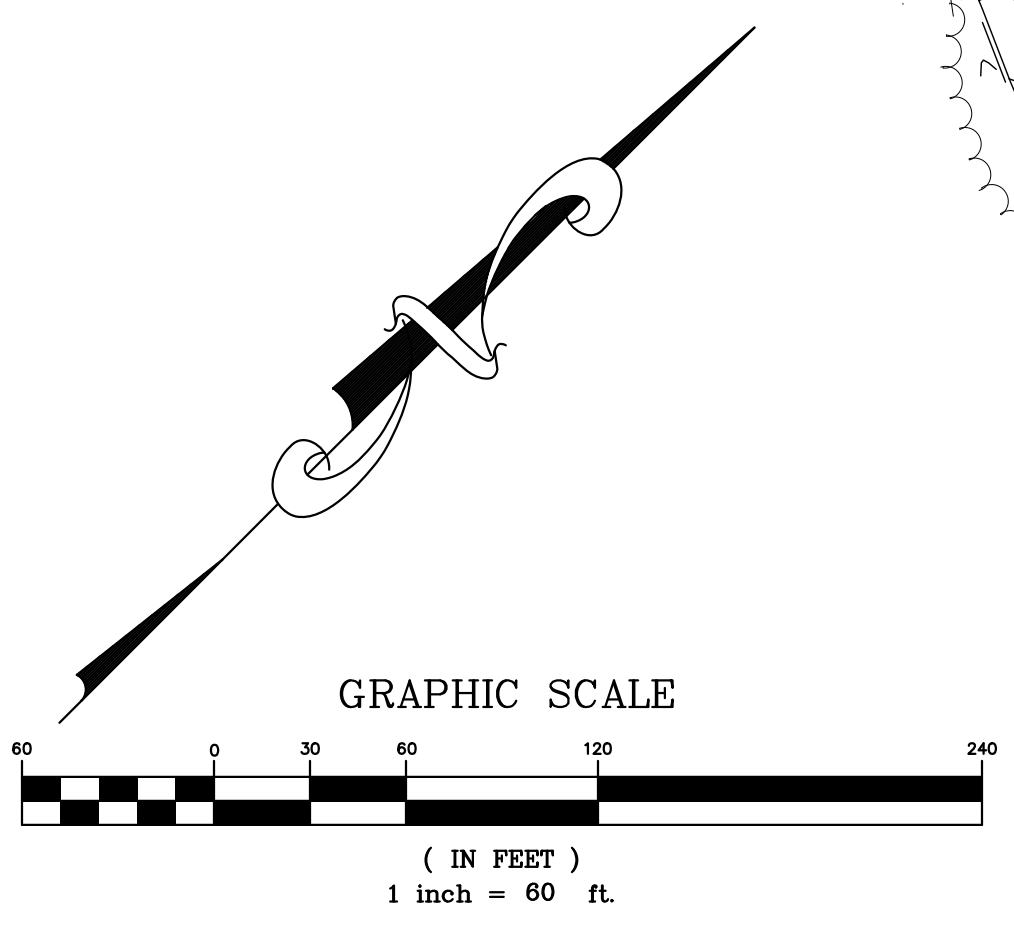
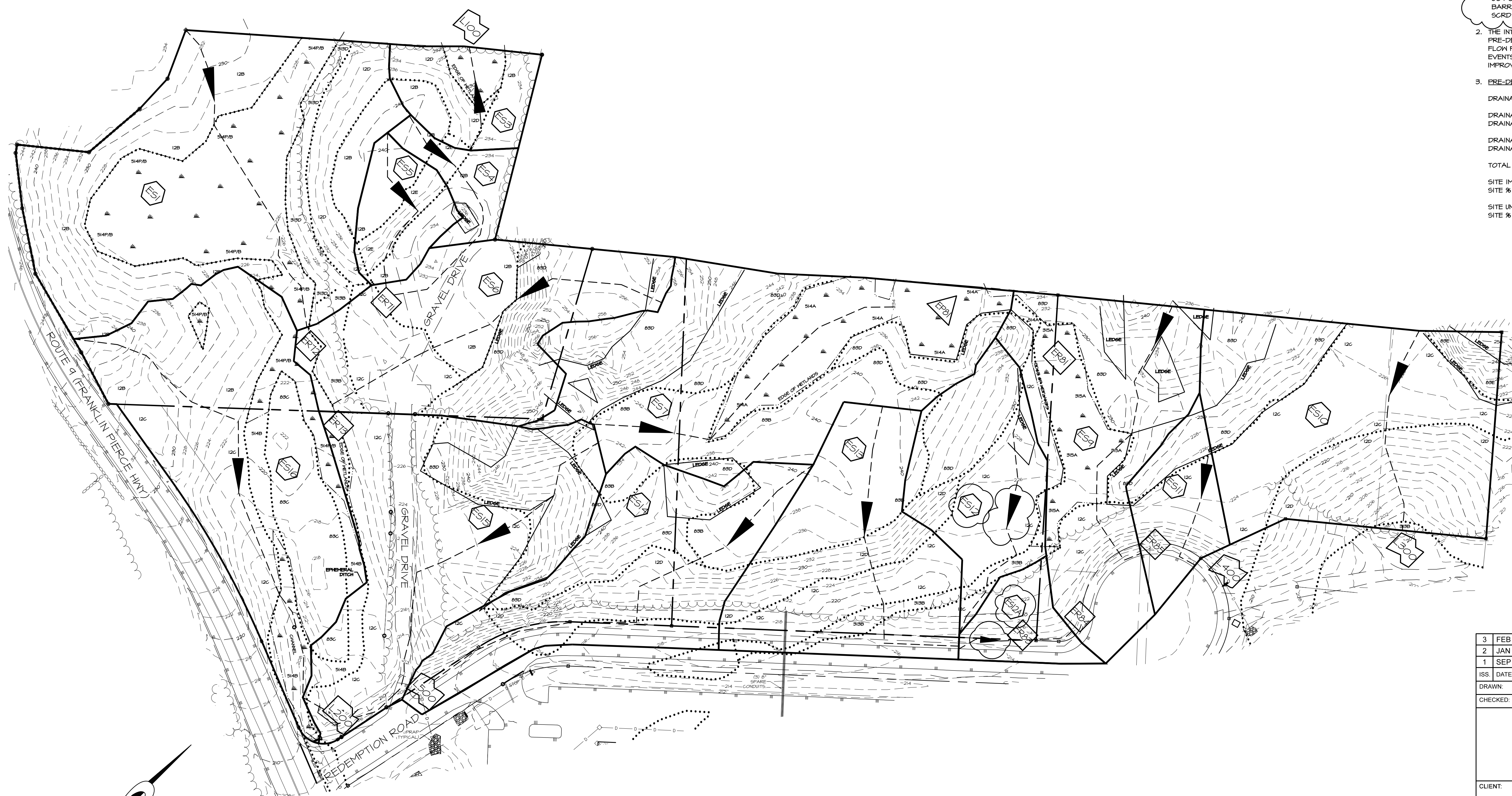


NOTES:

- OWNER OF RECORD:
TAX MAP 233 LOT 71 & TAX MAP 234 LOTS 1.2 & 1.4
RRBS, LLC
607 CALEF HIGHWAY, SUITE 200
BARRINGTON, NH 03825
SCRD BK4719 PG0827
- THE INTENT OF THIS PLAN IS TO CALCULATE PRE-DEVELOPMENT SUBCATCHMENT AREAS AND FLOW PATHS FOR MODELING VARIOUS STORM EVENTS IN PREPARATION FOR SITE IMPROVEMENTS.
- PRE-DEVELOPMENT DRAINAGE AREA CALCS:
DRAINAGE ANALYSIS TOTAL AREA = 122,655 SF
DRAINAGE ANALYSIS IMPERVIOUS = 18,971 SF
DRAINAGE ANALYSIS % IMPERVIOUS = 2.63%
DRAINAGE ANALYSIS UNDISTURBED = 122,655 SF
DRAINAGE ANALYSIS % UNDISTURBED = 100%
TOTAL AREA OF SITE = 554,574 SF
SITE IMPERVIOUS AREA = 0 SF
SITE % IMPERVIOUS = 0%
SITE UNDISTURBED AREA = 554,574 SF
SITE % UNDISTURBED = 100%



3	FEB 7, 2020	FOR APPROVAL	
2	JAN 6, 2020	FOR APPROVAL	
1	SEP 13, 2019	FOR APPROVAL	
ISS. DATE:	DESCRIPTION OF ISSUE:		CHK.
DRAWN:	MCV	DESIGN:	MCV
CHECKED:	BDS	CHECKED:	BDS



CLIENT:
TURBOCAM INTERNATIONAL
607 CALEF HIGHWAY
BARRINGTON, NH 03825

SEAL:

TITLE:
PRE-DEVELOPMENT
DRAINAGE PLAN
FOR
TAX MAP 233 LOTS 1.2, 1.4, AND 77
TURBOCAM INTERNATIONAL
ROUTE 9 (SITE)
BARRINGTON, NH 03825
& TOWN OF BARRINGTON
PO BOX 660
BARRINGTON, NH 03825

PROJECT: 19-020 SCALE: 1"=60' SHEET: SW1

NOTES:

1. OWNER OF RECORD:
TAX MAP 233 LOT 77
RRB5, LLC
607 CALEF HIGHWAY, SUITE 200
BARRINGTON, NH 03825
SCRD BK4714 PG0827
2. THE INTENT OF THIS PLAN IS TO CALCULATE POST-DEVELOPMENT SUBCATCHMENT AREAS AND FLOW PATHS FOR MODELING VARIOUS STORM EVENTS IN PREPARATION FOR SITE IMPROVEMENTS.
3. POST-DEVELOPMENT DRAINAGE AREA CALC'S:
DRAINAGE ANALYSIS TOTAL AREA = 122,655 SF
DRAINAGE ANALYSIS IMPERVIOUS = 106,896 SF
DRAINAGE ANALYSIS % IMPERVIOUS = 86.74%
DRAINAGE ANALYSIS UNDISTURBED AREA = ± 503,305 SF
DRAINAGE ANALYSIS % UNDISTURBED = 69.37%
TOTAL AREA OF SITE = 554,514 SF
SITE IMPERVIOUS AREA = 81,425 SF
SITE % IMPERVIOUS = 15.11%
SITE UNDISTURBED AREA = ± 330,224 SF
SITE % UNDISTURBED = 60.44%

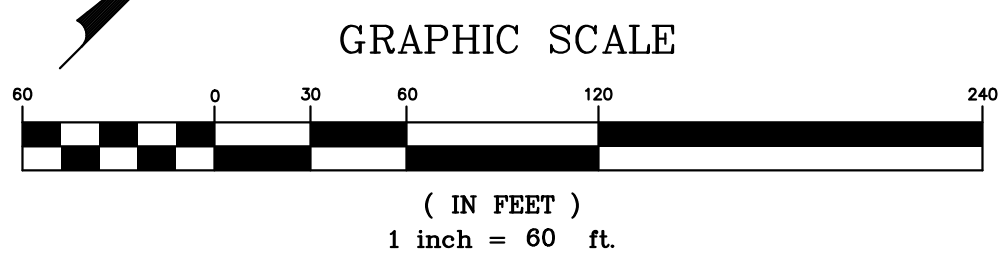


4	FEB 25, 2020	FOR APPROVAL	
3	FEB 13, 2020	FOR APPROVAL	
1	SEP 13, 2019	FOR APPROVAL	
ISS. DATE:	DESCRIPTION OF ISSUE:		CHK:
DRAWN:	MCV/JJM	DESIGN:	MCV
CHECKED:	BDS	CHECKED:	BDS

CLIENT:
TURBOCAM INTERNATIONAL
607 CALEF HIGHWAY
BARRINGTON, NH 03825

TITLE:
POST-DEVELOPMENT
DRAINAGE PLAN
FOR
TAX MAP 233 LOT 77
RRB5, LLC &
TURBOCAM INTERNATIONAL
ROUTE 9 / REDEMPTION ROAD (SITE)
BARRINGTON, NH 03825

PROJECT: 19-020 SCALE: 1"=60' SHEET: SW2



SEAL: