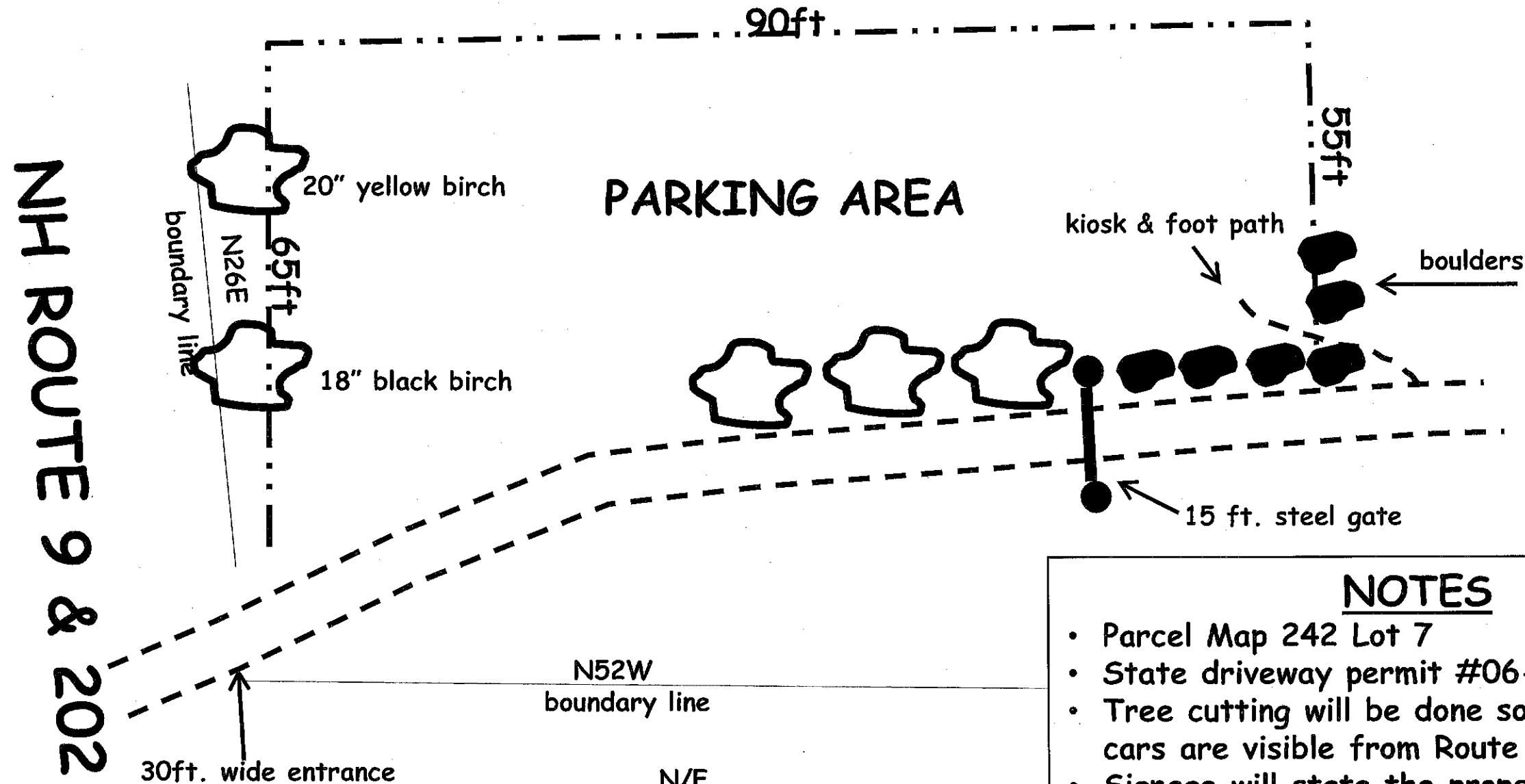
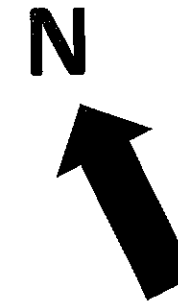


Southeast Land Trust of NH  
 Stonehouse Forest  
 Route 9 Parking Plan



N52W  
 boundary line

N/F  
 French  
 Map 242 Lot11

PLANNING BOARD  
 BARRINGTON, NH

**- APPROVED -**

File Number 242-27-GB-19-Parking Area

Date 7/24/2019

Chairman [Signature]

**NOTES**

- Parcel Map 242 Lot 7
- State driveway permit #06-027-556
- Tree cutting will be done so that parked cars are visible from Route 202
- Signage will state the property is closed after sunset
- Parking area will have a kiosk with map & property information
- Erosion control must be in place prior to disturbance of the site
- Gates to all parking areas will be keyed alike
- A "No Parking Emergency Vehicle Access" sign will be placed on the gate