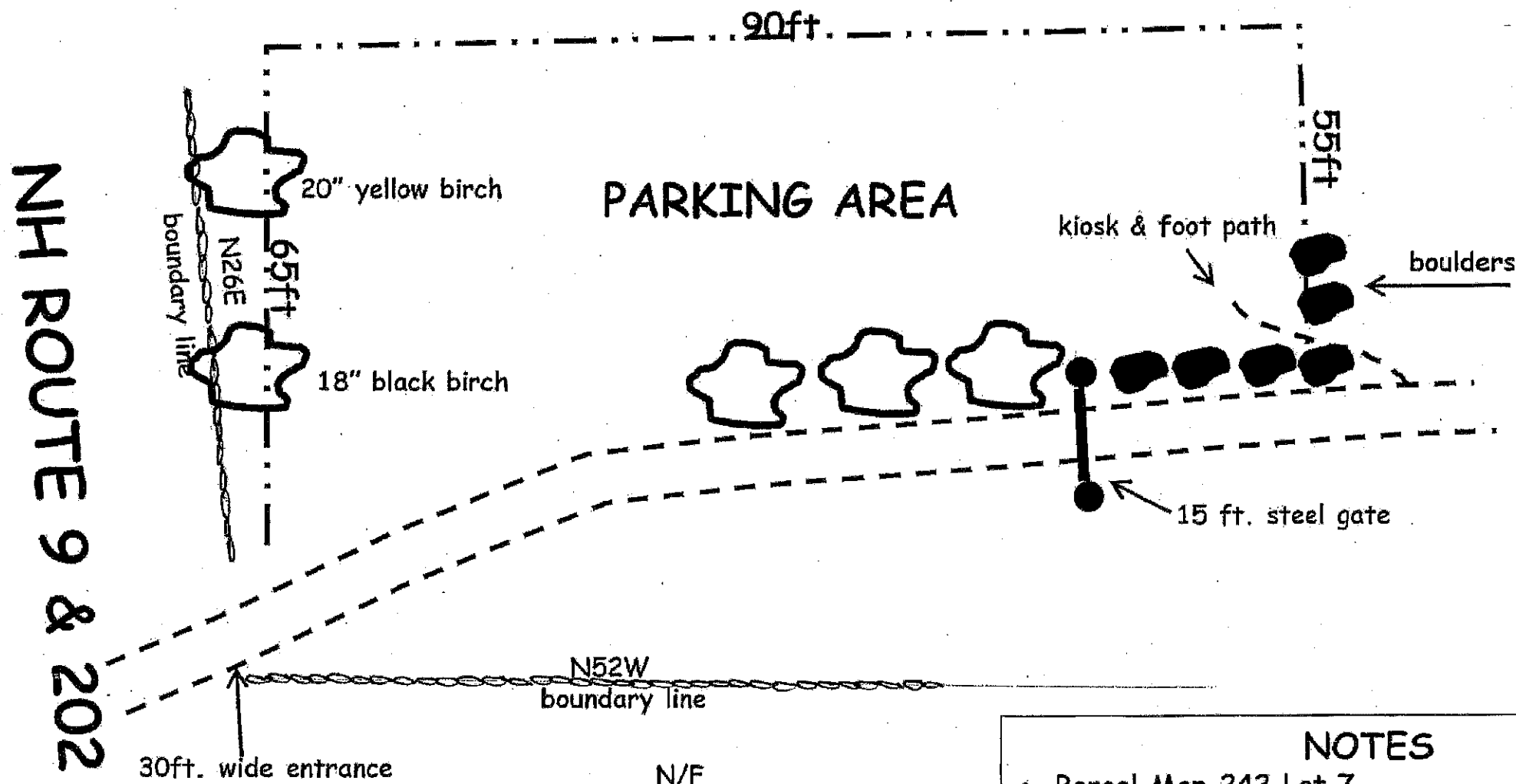


Southeast Land Trust of NH  
 Stonehouse Forest  
 Route 9 Parking Plan



N/F  
 French  
 Map 242 Lot11

**NOTES**

- Parcel Map 242 Lot 7
- Parking area will be stumped graded and covered with 12 inches of  $\frac{3}{4}$ " processed gravel
- Terrain - less than 3% sloped to the north
- Soils - Gloucester, stony, dry, >60" to bedrock
- State driveway permit requirements
- West edge will be cleared to the boundary line except for 2 specimen birches

LAND USE OFFICE

MAY 13 2019

RECEIVED