



LEGEND

- PROPERTY LINE
- EXISTING EDGE OF PAVEMENT
- EXISTING CONTOUR LINE
- EXISTING OVERHEAD WIRES
- EXISTING STONEWALL
- EXISTING UTILITY POLE
- EXISTING LIGHT POLES
- ◀ EXISTING BUILDING LIGHT FIXTURES
- ⊕ EXISTING CATCH BASIN
- ⊙ EXISTING WELL
- ⊕ CAPE COD BERM
- ▽ VERTICAL GRANITE CURB

CAREFULLY REVIEW ALL SHEETS OF THIS PACKAGE TO INSURE PROPER CONSTRUCTION. SPECIFIC SITE CONDITIONS SHOULD BE EXPLORED PRIOR TO CONSTRUCTION. CONTACT BOTH THE DESIGN ENGINEER AND THE PROJECT OWNER FOR ANY AVAILABLE GEOTECHNICAL OR HYDROGEOLOGICAL INFORMATION AVAILABLE BUT NOT CONTAINED WITH IN THE PLAN SET. IF THERE ARE ANY QUESTIONS WITH THE DESIGN PRESENTED IN THIS PLAN SET PLEASE CONTACT THE ENGINEERING STAFF AT NORWAY PLAINS ASSOCIATES, INC. (603)-335-3946.

SHEET INDEX
 SHEET E-1 EXISTING FEATURES 1" = 30'
 SHEET C-1 OVERALL SITE PLAN 1" = 30'

TAX MAP 220 LOT 33
 JOHN & ALICE COOK
 3 BRITANNY LANE
 BARRINGTON, NH 03825

TAX MAP 220 LOT 32
 WOLFGANG & KLAUS BOEHM
 11 JOALCO ROAD
 STRAFFORD, NH 03884

TAX MAP 220 LOT 54-71
 MILL FALLS RE LLC
 PO BOX 827
 CENTER OSSISPEE, NH 03814

TAX MAP 220 LOT 53
 THE JOHN D. MARSHALL AND TARA
 LYNN FULTON REVOCABLE LIVING TRUST
 JOHN D. MARSHALL & TARA LYNN
 FULTON TRUSTEES
 45 TOLAND ROAD
 BARRINGTON, NH 03825

TAX MAP
 OWNER C
 MILL POND
 OF BARRI
 55 CALEF
 BARRINGTON,
 SCRD BOOK 4

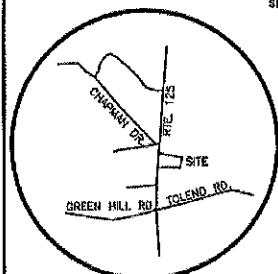
EXISTING FI
 TAX MAP
 55 CALEF HIGHWA
 BARRIN
 PREP
 REN A
 OCTC
 GRV

PLANNING BOARD APPROVAL BLOCK

PLANNING BOARD
 BARRINGTON, NH
 -APPROVED-
 File Number 200-47-RE-19 SR
 Date 11/18/2019
 Chairman [Signature]



- GENERAL
1. TH
 2. TO
 3. TH
 4. ON
 5. AL
 6. CO
 7. NO
 8. DI
 9. RE



- REFERENCE PLAN
- 1) REVISION SITE PLAN, ROUTE 125 BARRINGTON NEW HAMPSHIRE FOR VMO, L.L.C. DATED: APRIL 2011; BY NORWAY PLAINS ASSOCIATES, INC.
 - 2) PROPOSED SITE PLAN, BARRINGTON, N.H. FOR GEORGE & LINDA SKOOLIGAS DATED: APRIL 1992; BY NORWAY PLAINS ASSOCIATES, INC.

FILE NO. 194
 PLAN NO. C-3011
 DWG. NO. 1922B
 P.B. NO.

31 Mooney Street, Alton, N.H. 603-875-3048



LEGEND

- PROPERTY LINE
- EXISTING OVERHEAD WIRES
- EXISTING STONEWALL
- o- EXISTING UTILITY POLE
- o- EXISTING LIGHT POLES
- 4 EXISTING BUILDING LIGHT FIXTURES
- ⊕ EXISTING CATCH BASIN
- PROPOSED BUILDING
- PROPOSED PAVEMENT
- PROPOSED SILT FENCE

CAREFULLY REVIEW ALL SHEETS OF THIS PACKAGE TO INSURE PROPER CONSTRUCTION. SPECIFIC SITE CONDITIONS SHOULD BE EXPLORED PRIOR TO CONSTRUCTION. CONTACT BOTH THE DESIGN ENGINEER AND THE PROJECT OWNER FOR ANY AVAILABLE GEOTECHNICAL OR HYDROGEOLOGICAL INFORMATION AVAILABLE BUT NOT CONTAINED WITH IN THE PLAN SET. IF THERE ARE ANY QUESTIONS WITH THE DESIGN PRESENTED IN THIS PLAN SET PLEASE CONTACT THE ENGINEERING STAFF AT NORWAY PLAINS ASSOCIATES, INC. (603)-335-3948.

SHEET INDEX

SHEET E-1	EXISTING FEATURES	1" = 30'
SHEET C-1	OVERALL SITE PLAN	1" = 30'

TAX MAP 220 LOT 33
JOHN & ALICE COOK
3 BRITANNY LAKE
BARRINGTON, NH 03825

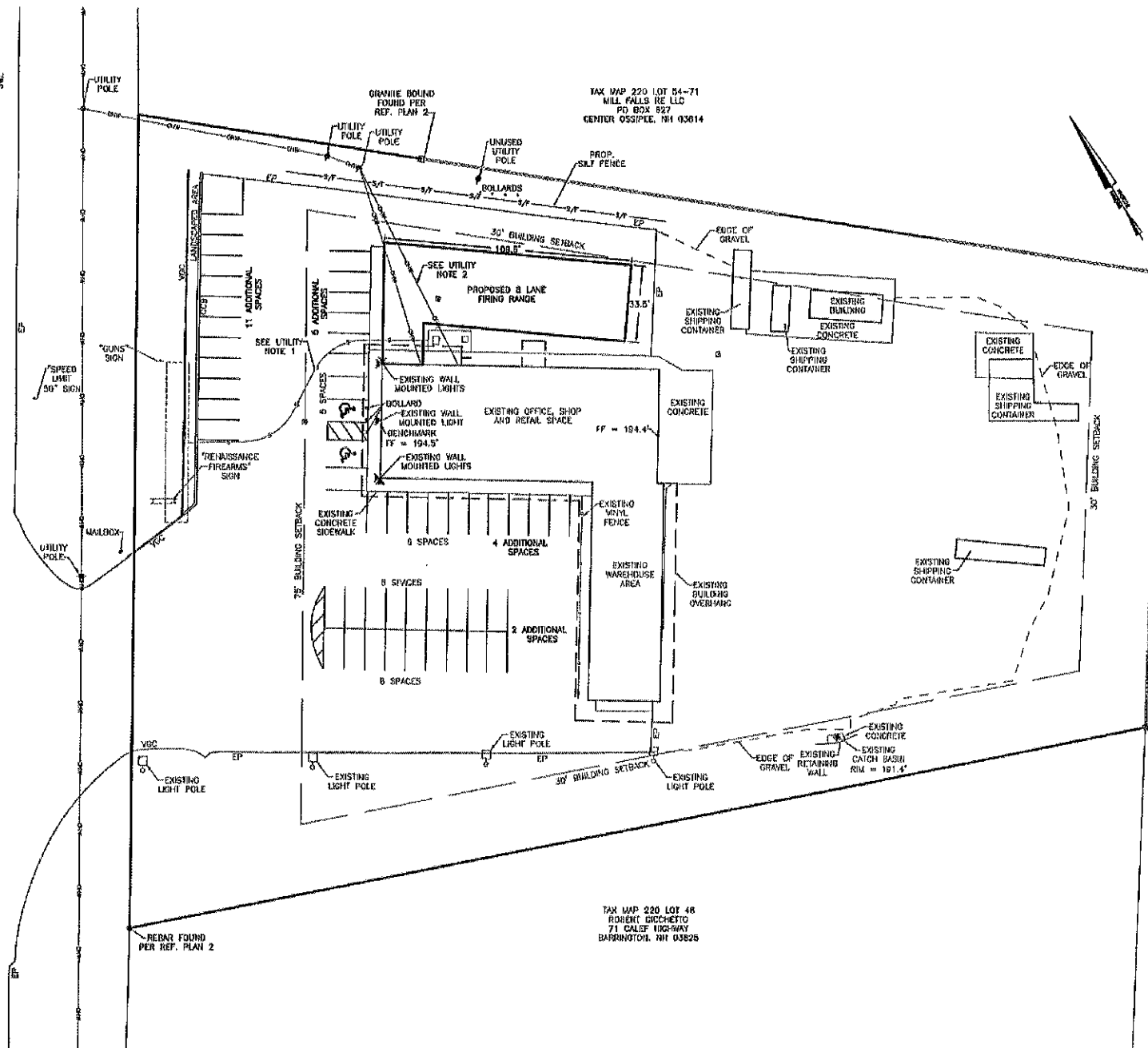
TAX MAP 220 LOT 32
WOLFGANG & KLAUS BOGEM
11 JONAS ROAD
STAFFORD, NH 03884

TAX MAP 220 LOT 54-71
MILL FALLS RE LLC
PO BOX 827
CENTER CROSSING, NH 03814

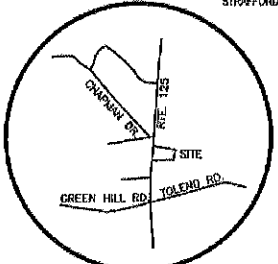
TAX MAP 220 LOT 53
THE JOHN D. MARSHALL AND TARA
LYNN FULFORD REVOCABLE LIVING TRUST
JOHN D. MARSHALL & TARA LYNN
FULTON TRUSTEES
45 TOLLAND ROAD
BARRINGTON, NH 03825

TAX MAP 220 LOT 46
ROBERT DICICCHETTO
71 CALEF HIGHWAY
BARRINGTON, NH 03825

CALEF HIGHWAY (NH ROUTE 125)



- GENERAL SITE
1. THIS PA
 2. DISTRICT
 3. TOTAL P
 4. THE PU
 5. SQUARE
 6. ALL EXE
 7. CONTRA
 8. DENO F
 9. DNEKS
 10. REGION
 11. MINM
 12. MINM
 13. MINM
 14. MINM
 15. MINM
 16. MINM
 17. MINM
 18. MINM
 19. MINM
 20. MINM
 21. MINM
 22. MINM
 23. MINM
 24. MINM
 25. MINM
 26. MINM
 27. MINM
 28. MINM
 29. MINM
 30. MINM
 31. MINM
 32. MINM
 33. MINM
 34. MINM
 35. MINM
 36. MINM
 37. MINM
 38. MINM
 39. MINM
 40. MINM
 41. MINM
 42. MINM
 43. MINM
 44. MINM
 45. MINM
 46. MINM
 47. MINM
 48. MINM
 49. MINM
 50. MINM
 51. MINM
 52. MINM
 53. MINM
 54. MINM
 55. MINM
 56. MINM
 57. MINM
 58. MINM
 59. MINM
 60. MINM
 61. MINM
 62. MINM
 63. MINM
 64. MINM
 65. MINM
 66. MINM
 67. MINM
 68. MINM
 69. MINM
 70. MINM
 71. MINM
 72. MINM
 73. MINM
 74. MINM
 75. MINM
 76. MINM
 77. MINM
 78. MINM
 79. MINM
 80. MINM
 81. MINM
 82. MINM
 83. MINM
 84. MINM
 85. MINM
 86. MINM
 87. MINM
 88. MINM
 89. MINM
 90. MINM
 91. MINM
 92. MINM
 93. MINM
 94. MINM
 95. MINM
 96. MINM
 97. MINM
 98. MINM
 99. MINM
 100. MINM



REFERENCE PLAN
1) "REVISED SITE PLAN, ROUTE 125 BARRINGTON NEW HAMPSHIRE FOR VINO, L.L.C." DATED: APRIL 2011; BY NORWAY PLAINS ASSOCIATES, INC.
2) "PROPOSED SITE PLAN, BARRINGTON, N.H. FOR GEORGE & LINDA SKOOLAKAS" DATED: APRIL 1992; BY NORWAY PLAINS ASSOCIATES, INC.

FILE NO. 194
PLAN NO. C-3011
DWG. NO. 19228
F.B. NO.

SIGNATURE OF OWNER: *[Signature]*

PLANNING BOARD APPROVAL BLOCK
PLANNING BOARD
BARRINGTON, NH
-APPROVED-
File Number 200-42-RD-19-SR
Date 11/18/2019
Chairman *[Signature]*

OVERALL
TAX MAP
55 CALEF HIGHW.
BARRIT
PREI
REN 1
OCT
08

