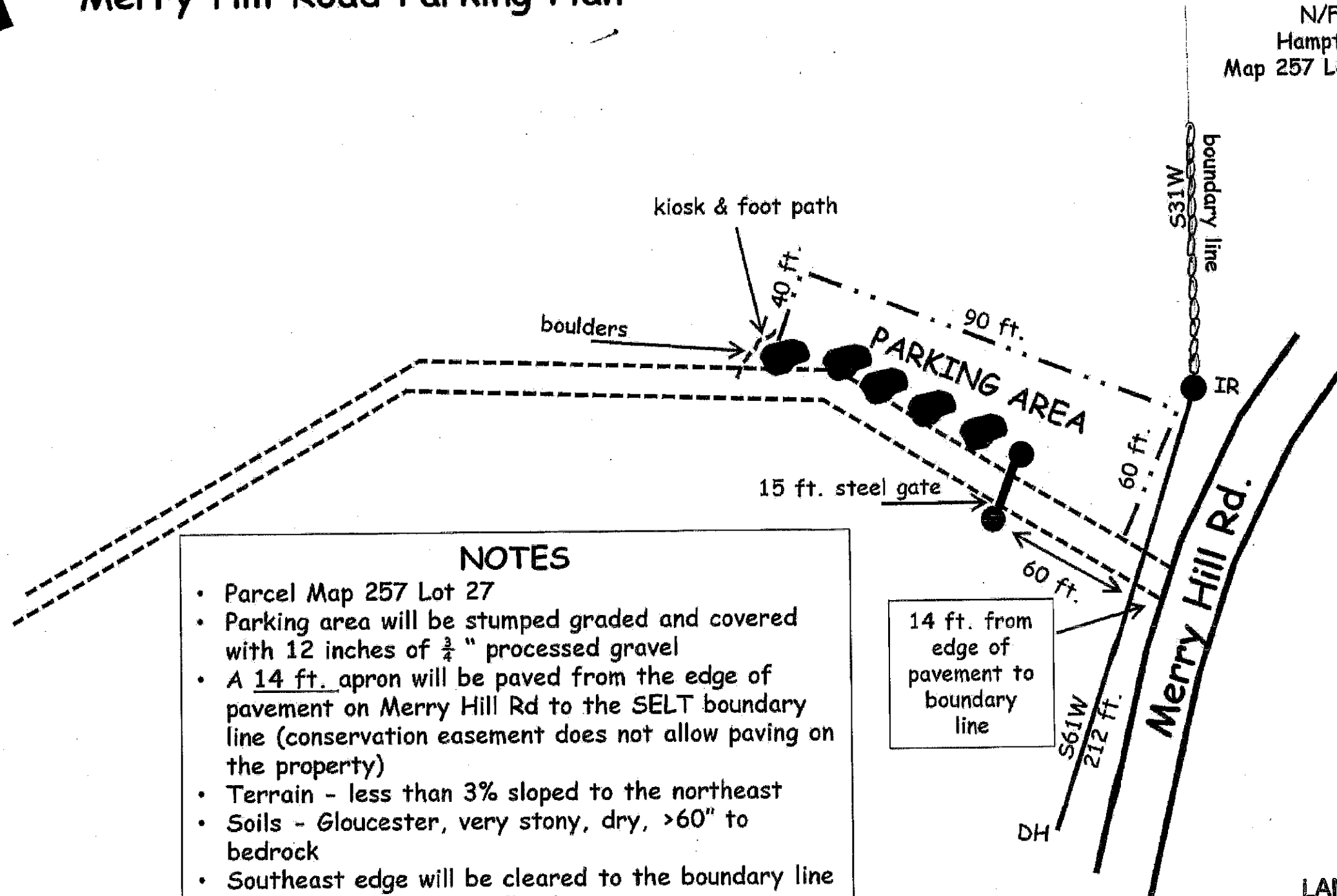




Southeast Land Trust of NH  
Stonehouse Forest  
Merry Hill Road Parking Plan

N/F  
Hampton  
Map 257 Lot 29-1



- NOTES**
- Parcel Map 257 Lot 27
  - Parking area will be stumped graded and covered with 12 inches of  $\frac{3}{4}$ " processed gravel
  - A 14 ft. apron will be paved from the edge of pavement on Merry Hill Rd to the SELT boundary line (conservation easement does not allow paving on the property)
  - Terrain - less than 3% sloped to the northeast
  - Soils - Gloucester, very stony, dry, >60" to bedrock
  - Southeast edge will be cleared to the boundary line for view from Merry Hill Rd

LAND USE OFFICE

MAY 13 2019

RECEIVED