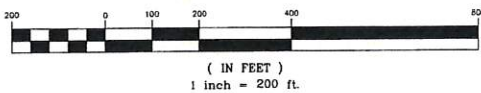


WETLANDS LEGEND

WETLAND	SOURCE
	NATIONAL WETLAND INVENTORY
	NATIONAL WETLAND INVENTORY PLUS

GRAPHIC SCALE



LAND USE OFFICE
 OCT 08 2019
 RECEIVED

F:\CADD\MASTER STANDARD\JBE-LAYOUTS.dwg 2/16/2017 12:25:50 PM EST

Design: JAC Draft: PSL Date: 11/05/19
 Checked: JAC Scale: AS NOTED Project No.: 19165
 Drawing Name: 19165-CONCEPT.dwg
 THIS PLAN SHALL NOT BE MODIFIED WITHOUT WRITTEN PERMISSION FROM JONES & BEACH ENGINEERS, INC. (JBE). ANY ALTERATIONS, AUTHORIZED OR OTHERWISE, SHALL BE AT THE USER'S SOLE RISK AND WITHOUT LIABILITY TO JBE.

REV.	DATE	REVISION	BY
0	11/5/19	ISSUED FOR REVIEW	PSL

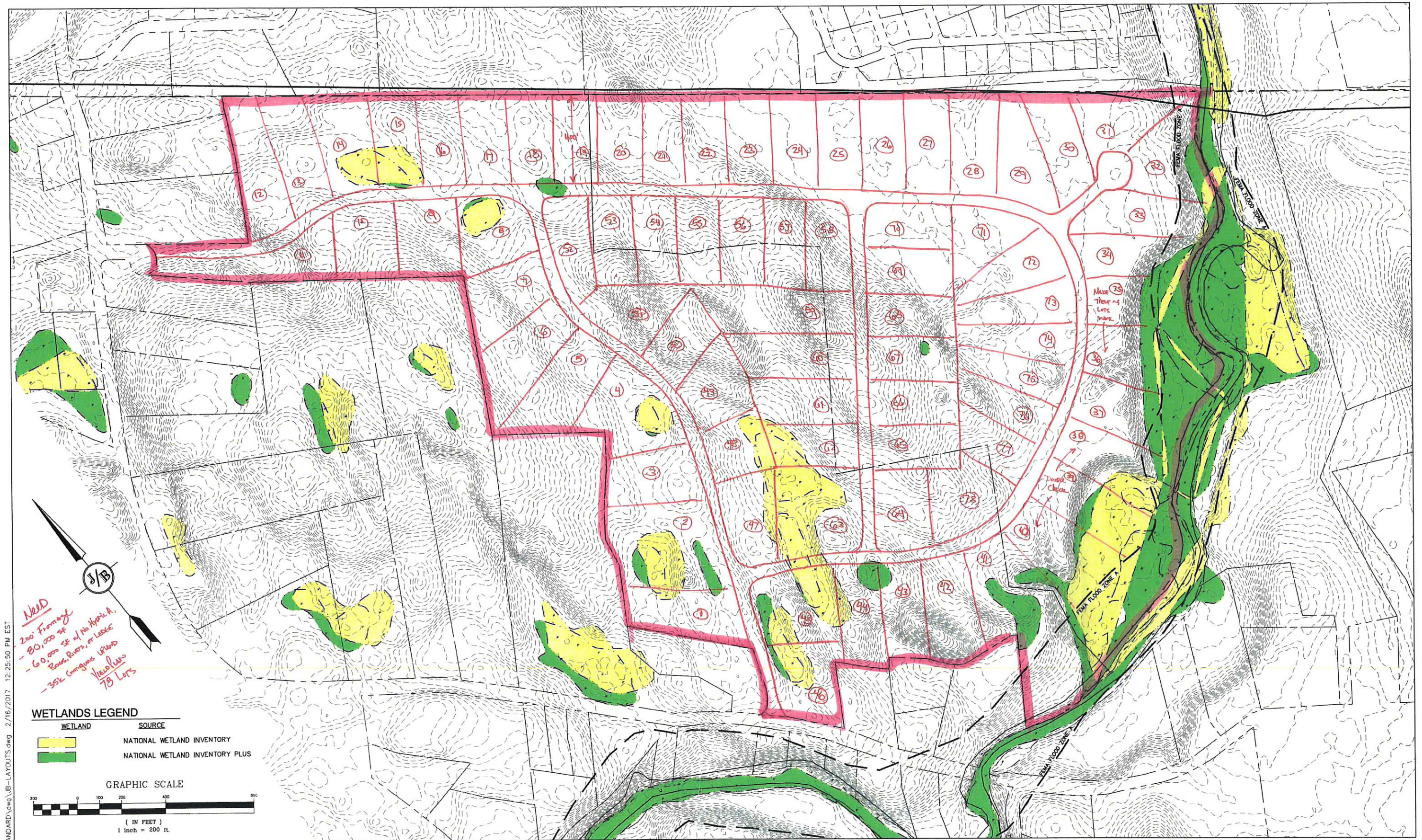
Designed and Produced in NH

J/B Jones & Beach Engineers, Inc.
Civil Engineering Services

85 Portsmouth Ave. 603-772-4746
 PO Box 219 FAX: 603-772-0227
 Stratham, NH 03885 E-MAIL: JBE@JONESANDBEACH.COM

Plan Name: **WETLAND PLAN**
 TAX MAP 210, LOT 44 & 57
 Project: **80-LOT RESIDENTIAL CLUSTER SUBDIVISION**
GREENHILL ROAD, BARRINGTON, NH 03825
 Owner of Record: **TRINITY CONSERVATION, LLC**
 119 FLAGG RD., ROCHESTER, NH 03839 BK 2539 PG 267

DRAWING No.
C5
 SHEET 5 OF 5
 JBE PROJECT NO. 19165



Need
 200' Fromage
 - 80,000 SF
 - 60,000 SF of No. Approx. A.
 - 352 Congruous Wetlands
 - 78 Lots

WETLANDS LEGEND

WETLAND	SOURCE
	NATIONAL WETLAND INVENTORY
	NATIONAL WETLAND INVENTORY PLUS

GRAPHIC SCALE

0 100 200 400 600
 (IN FEET)
 1 inch = 200 ft

Design: JAC Draft: PSL Date: 11/05/19
 Checked: JAC Scale: AS NOTED Project No.: 19165
 Drawing Name: 19165-CONCEPT.dwg
 THIS PLAN SHALL NOT BE MODIFIED WITHOUT WRITTEN PERMISSION FROM JONES & BEACH ENGINEERS, INC. (JBE). ANY ALTERATIONS, AUTHORIZED OR OTHERWISE, SHALL BE AT THE USER'S SOLE RISK AND WITHOUT LIABILITY TO JBE.

REV.	DATE	REVISION	BY
0	11/5/19	ISSUED FOR REVIEW	PSL

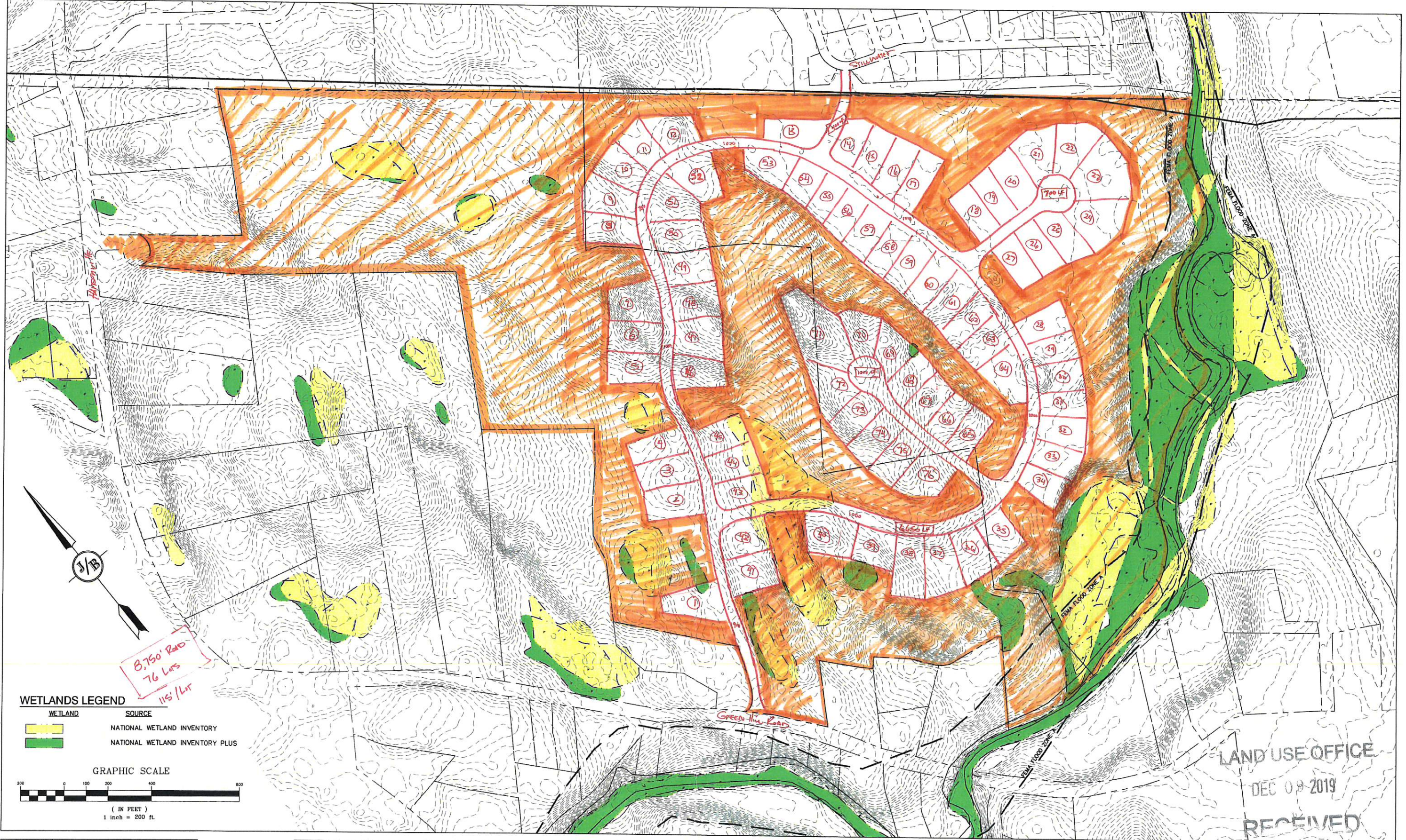
J/B Jones & Beach Engineers, Inc.
 Civil Engineering Services
 85 Portsmouth Ave. PO Box 219 Stratham, NH 03885
 603-772-4746 FAX: 603-772-0227 E-MAIL: JBE@JONESANDBEACH.COM

Plan Name: **WETLAND PLAN**
 TAX MAP 210, LOT 44 & 57
 Project: **80-LOT RESIDENTIAL CLUSTER SUBDIVISION GREENHILL ROAD, BARRINGTON, NH 03825**
 Owner of Record: **TRINITY CONSERVATION, LLC**
 119 FLAGG RD., ROCHESTER, NH 03839 BK 2539 PG 267

DRAWING No. **C5**
 SHEET 5 OF 5
 JBE PROJECT NO. 19165

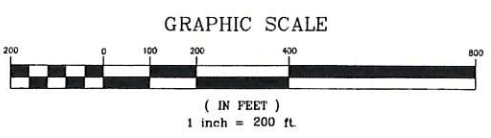
F:\CADD\MASTER STANDARD\dwg\JB-LAYOUTS.dwg 2/16/2017 12:25:50 PM EST

F:\CADD\MASTER STANDARD\dwg\JB-LAYOUTS.dwg 2/16/2017 12:25:50 PM EST



WETLANDS LEGEND

WETLAND	SOURCE
	NATIONAL WETLAND INVENTORY
	NATIONAL WETLAND INVENTORY PLUS



8,750' Rad
76 Lots
115' Lot

LAND USE OFFICE
DEC 09 2019
RECEIVED

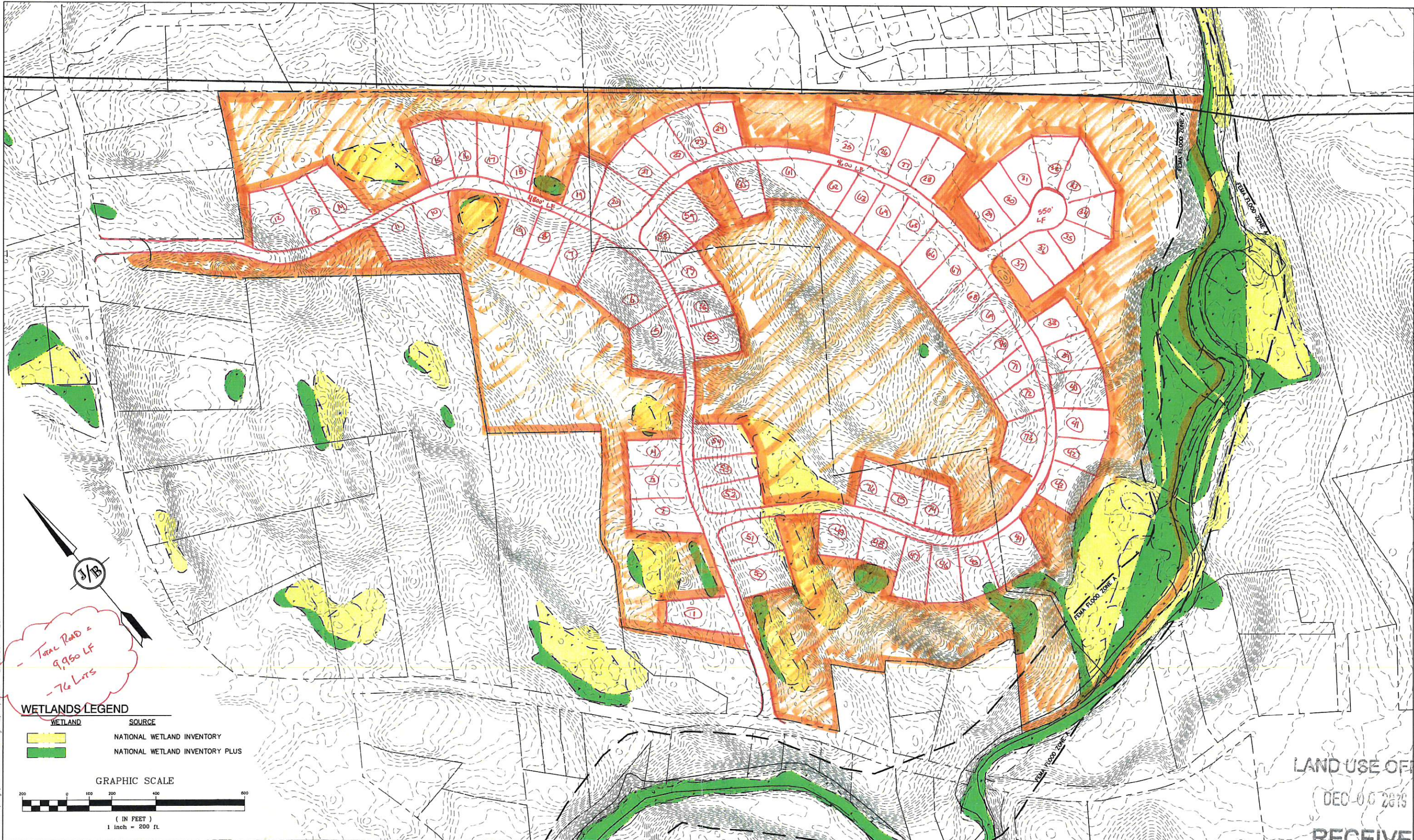
Design: JAC Draft: PSL Date: 11/05/19
 Checked: JAC Scale: AS NOTED Project No.: 19165
 Drawing Name: 19165-CONCEPT.dwg
 THIS PLAN SHALL NOT BE MODIFIED WITHOUT WRITTEN PERMISSION FROM JONES & BEACH ENGINEERS, INC. (JBE). ANY ALTERATIONS, AUTHORIZED OR OTHERWISE, SHALL BE AT THE USER'S SOLE RISK AND WITHOUT LIABILITY TO JBE.

REV.	DATE	REVISION	BY
0	11/5/19	ISSUED FOR REVIEW	PSL

J/B Jones & Beach Engineers, Inc.
 Civil Engineering Services
 85 Portsmouth Ave. PO Box 219 Stratham, NH 03885
 603-772-4746 FAX: 603-772-0227 E-MAIL: JBE@JONESANDBEACH.COM

Plan Name: **WETLAND PLAN**
 TAX MAP 210, LOT 44 & 57
 Project: **80-LOT RESIDENTIAL CLUSTER SUBDIVISION**
GREENHILL ROAD, BARRINGTON, NH 03825
 Owner of Record: **TRINITY CONSERVATION, LLC**
 119 FLAGG RD., ROCHESTER, NH 03839 BK 2539 PG 267

DRAWING No.
C5
 SHEET 5 OF 5
 JBE PROJECT NO. 19165



Total Road = 9,950 LF
 - 76 Lots

WETLANDS LEGEND

WETLAND	SOURCE
	NATIONAL WETLAND INVENTORY
	NATIONAL WETLAND INVENTORY PLUS

GRAPHIC SCALE

0 100 200 400 600
 (IN FEET)
 1 inch = 200 ft

LAND USE OFFICE
 DEC 06 2019
 RECEIVED

F:\CADD\MASTER STANDARD\cwg\jbe-LAYOUTS.dwg 2/16/2017 12:25:50 PM EST

Design: JAC Draft: PSL Date: 11/05/19
 Checked: JAC Scale: AS NOTED Project No.: 19165
 Drawing Name: 19165-CONCEPT.dwg

THIS PLAN SHALL NOT BE MODIFIED WITHOUT WRITTEN PERMISSION FROM JONES & BEACH ENGINEERS, INC. (JBE). ANY ALTERATIONS, AUTHORIZED OR OTHERWISE, SHALL BE AT THE USER'S SOLE RISK AND WITHOUT LIABILITY TO JBE.

REV.	DATE	REVISION	BY
0	11/5/19	ISSUED FOR REVIEW	PSL

J/B Jones & Beach Engineers, Inc.
 Civil Engineering Services

85 Portsmouth Ave. PO Box 219 Stratham, NH 03885

603-772-4746 FAX: 603-772-0227 E-MAIL: JBE@JONESANDBEACH.COM

Plan Name: **WETLAND PLAN**
 TAX MAP 210, LOT 44 & 57

Project: **80-LOT RESIDENTIAL CLUSTER SUBDIVISION**
 GREENHILL ROAD, BARRINGTON, NH 03825

Owner of Record: **TRINITY CONSERVATION, LLC**
 119 FLAGG RD., ROCHESTER, NH 03839 BK 2539 PG 267

DRAWING No.
C5

SHEET 6 OF 5
 JBE PROJECT NO. 19165