



## ABOUT

Phoenix Contracting LLC® is a small business that was formed in 2018 with a focus on disaster relief services, logistic coordination, commodity procurement, and equipment management for the Federal Government & Commercial Sector. With a team of industry leaders with over 30+ years combined of experience Phoenix ensures both high quality and low cost. We have provided services for virtually every sector of the federal government including all branches of the Armed Forces, DHS, VA, and GSA.

## CORE COMPETENCIES

- Disaster response services
- Disaster product procurement
- Disaster logistics support
- Mobile housing Solutions
- Mobile office solutions
- Medical product procurement
- PPE procurement
- Trailer Manufacturing

## POINT OF CONTACT

**Asad Yusupov**

Managing Partner

asad@phxcontracting.com

813-895-1216



## NAICS

- 332994 - Small Arms, Ordnance, and Ordnance Accessories Manufacturing
- 333120 - Construction Machinery Manufacturing
- 336212 - Truck Trailer Manufacturing
- 532412 - Construction, Mining, and Forestry Machinery and Equipment Rental and Leasing
- 532490 - Other Commercial and Industrial Machinery and Equipment Rental and Leasing
- 541611 - Administrative Management and General Management Consulting Services
- 561730 - Landscaping Services
- 721110 - Hotels (except Casino Hotels) and Motels
- 722320 - Caterers
- 811310 - Commercial and Industrial Machinery and Equipment (except Automotive and Electronic) Repair and Maintenance
- 336211 - Motor Vehicle Body Manufacturing

## PAST PERFORMANCE

FY18: Hurricane Maria, Hurricane Irma, Hurricane Michael, DHS Del Rio, DHS Nogales

FY19: Hurricane Dorian, VA/DHS/Armed Forces

FY20: COVID RELIEF EFFORTS - FEMA/VA/DOJ

FY21: COVID RELIEF EFFORTS - FEMA/VA/DOJ



# **PHOENIX CONTRACTING PROPOSAL**

## **Excavator Rental**



Phoenix Contracting will provide;

One CAT 308 or similar that meets the specs listed in the SOW.

- A digging bucket (quick disconnect preferred),
- A grading bucket (quick disconnect preferred),
- A hydraulic thumb,
- Rubber tracks preferred,
- Closed cab (meeting all safety requirements)
- Zero tail swing,
- front blade (preferred),
- Standard boom configuration, no offset joint,
- Air conditioning.
- All other necessary components for the smooth and safe operation of the excavator.

**PAST PERFORMANCE**

Please see separate reference forms.

**PRICING**

\$6,850.00 Each per month

**TOTAL CONTRACT PRICE FOR 6 MONTH RENTAL**

- \$41,100.00



# Thank you for your time

If you have any questions, please contact  
us directly:

Asad Yusupov

[asad@phxcontracting.com](mailto:asad@phxcontracting.com)

813- 895-1216

Josh Parsittie

[Josh@phxcontracting.com](mailto:Josh@phxcontracting.com)

330-749-5383



CRANE RENTALS PAST PERFORMANCE

W912HZ21P0055- FT Polk Crane

Point of Contact Information:

Garrett Dole

601-634- 2635

[Garrett.Doles@usace.army.mil](mailto:Garrett.Doles@usace.army.mil)

N3904021P0101 Crane Rental

Point of Contact Information:

Steven Carlberg

Email: [steven.carlberg@navy.mil](mailto:steven.carlberg@navy.mil)

Tel: 207-603-9341

N3904021P0145 -PNS Crane Rental

Point of Contact Information:

Steven Carlberg

Email: [steven.carlberg@navy.mil](mailto:steven.carlberg@navy.mil)

Tel: 207-603-9341

W912HZ21P0039- 120T Rough Terrain Crane and Operator

Point of Contact Information:

Jon- 601-634-7269

[Jon-Vincent.S.Holden@usace.army.mil](mailto:Jon-Vincent.S.Holden@usace.army.mil)



# Cat<sup>®</sup> 308 CR (Fixed Boom) MINI HYDRAULIC EXCAVATOR

## FEATURES:

The Cat<sup>®</sup> 308 CR Mini Excavator delivers maximum power and performance in a mini size to help you work in a wide range of applications.

### ALL DAY COMFORT

- A sealed and pressurized cab is equipped with an improved air conditioning system, adjustable wrist rests and a suspension seat to help keep you working comfortably all day long.

### EASY TO OPERATE

- Controls are easy to use and the intuitive Next Generation Monitor provides customizable machine operator preferences and easy to read machine information.

### STICK STEER TRAVEL MODE

- Moving around the job site is even easier with Cat Stick Steer. Easily switch from traditional travel controls with levers and pedals to joystick controls with a push of a button. The benefit of less effort and improved control is in your hands!

### BIG PERFORMANCE IN A MINI DESIGN

- Increased lifting, swinging, travel and multi-functioning performance help you get the job done more efficiently, and blade float allows for easy clean up.

### SAFETY ON THE JOB SITE

- Your safety is our top priority. The Cat mini excavator is designed to help keep you safe on the job. A back-up camera, courtesy work lights and a fluorescent retractable seat belt are just a few of the safety features we've built into the machine.

### SIMPLE SERVICE FOR LESS DOWNTIME

- Maintenance is quick and easy on the Cat mini excavator. Routine check points are easy to access at ground level with grouped service points and robust service panels.

### LOWER OPERATING COSTS

- Equipped with features such as auto idle, auto engine shutdown, and efficient hydraulics with a variable displacement pump, the Cat mini excavator was designed with reducing your operating costs in mind.

### UNMATCHED DEALER SUPPORT

- Your Cat dealer is here to help you reach your business goals. From providing equipment solutions to operator training to service needs and beyond, your Cat dealer is ready to help.

## Specifications

### Engine

Engine Model	Cat <sup>®</sup> C3.3B	
U.S. EPA Tier 4 Final/EU Stage V		
<b>Net Power @ 2,200 rpm</b>		
ISO 9249:2007, 80/1269/EEC	51.8 kW	69.5 hp
<b>Gross Power</b>		
SAE J1995:2014	55.4 kW	74.3 hp
Bore	94 mm	3.7 in
Stroke	120 mm	4.7 in
Displacement	3.33 L	203 in <sup>3</sup>

- Net power advertised is the power available at the flywheel when the engine is equipped with air cleaner, exhaust system and fan.

### Weights

Minimum Operating Weight with Cab*	7330 kg	16,163 lb
Maximum Operating Weight with Cab**	8025 kg	17,695 lb

\*Minimum Weight is based on rubber tracks, no counterweight, operator, full fuel tank, standard stick, blade and no bucket.

\*\*Maximum Weight is based on steel tracks with rubber pads, counterweight, operator, full fuel tank, long stick, blade and no bucket.

### Weight Increase from Minimum Configuration

Counterweight	250 kg	551 lb
Long Stick	85 kg	187 lb
Steel Tracks with Pads	300 kg	662 lb



# 308 CR Mini Hydraulic Excavator

## Travel System

Travel Speed – High	4.9 km/h	3.0 mph
Travel Speed – Low	3.0 km/h	1.8 mph
Maximum Traction Force – High Speed	29.3 kN	6,587 lbf
Maximum Traction Force – Low Speed	71 kN	15,962 lbf
Ground Pressure – Minimum Weight	32.1 kPa	4.7 psi
Ground Pressure – Maximum Weight	35.0 kPa	5.1 psi
Gradeability (maximum)	30 degrees	

## Service Refill Capacities

Cooling System	10.0 L	2.6 gal
Engine Oil	11.2 L	3.0 gal
Fuel Tank	145 L	38 gal
Hydraulic Tank	53 L	14 gal
Hydraulic System	110 L	29 gal

## Hydraulic System

Load Sensing Hydraulics with Variable Displacement Piston Pump		
Pump Flow @ 2,400 rpm	167 L/min	44 gal/min
Operating Pressure – Equipment	285 bar	4,134 psi
Operating Pressure – Travel	285 bar	4,134 psi
Operating Pressure – Swing	250 bar	3,626 psi
Maximum Auxiliary Circuit – Primary		
Flow at Pump*	131 L/min	35 gal/min
Pressure at Pump*	285 bar	4,134 psi
Maximum Auxiliary Circuit – Secondary		
Flow at Pump*	33 L/min	9 gal/min
Pressure at Pump*	285 bar	4,134 psi
Digging Force – Stick (Standard)	41.3 kN	9,285 lbf
Digging Force – Stick (Long)	36.7 kN	8,250 lbf
Digging Force – Bucket	58.9 kN	13,241 lbf

\*Flow and pressure are not combinable. Under load, as flow rises pressure goes down.

## Swing System

Machine Swing Speed	10.6 rpm
---------------------	----------

## Blade

Width (Standard)	2300 mm	90.6 in
Width (Wide)	2450 mm	96.5 in
Height	431 mm	17 in

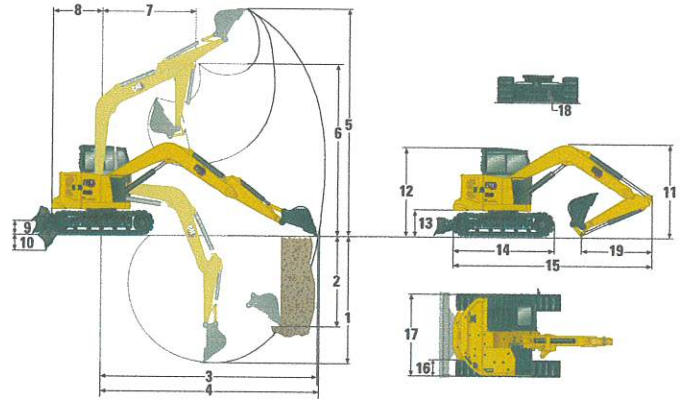
## Certification – Cab

Roll Over Protective Structure (ROPS)	ISO 12117-2:2008
Tip Over Protective Structure (TOPS)	ISO 12117:1997
Top Guard	ISO 10262:1998 (Level I)

## Sound

Operator Sound Pressure (ISO 6396:2008)	72 dB(A)
Average Exterior Sound Pressure (ISO 6395:2008)	99 dB(A)

• European Union Directive “2000/14/EC”



## Dimensions

	Standard Stick	Long Stick
<b>1</b> Dig Depth	4145 mm (163 in)	4687 mm (185 in)
<b>2</b> Vertical Wall	3600 mm (142 in)	4110 mm (162 in)
<b>3</b> Maximum Reach at Ground Level	6246 mm (246 in)	6766 mm (266 in)
<b>4</b> Maximum Reach	6391 mm (252 in)	6900 mm (272 in)
<b>5</b> Maximum Dig Height	7392 mm (291 in)	7809 mm (307 in)
<b>6</b> Maximum Dump Clearance	5255 mm (207 in)	5672 mm (223 in)
<b>7</b> Boom in Reach	1681 mm (66 in)	2250 mm (89 in)
<b>8</b> Tail Swing		
with Counterweight	1425 mm (56 in)	1425 mm (56 in)
without Counterweight	1290 mm (51 in)	1290 mm (51 in)
<b>9</b> Maximum Blade Height	370 mm (14.6 in)	370 mm (14.6 in)
<b>10</b> Maximum Blade Depth	407 mm (16.0 in)	407 mm (16.0 in)
<b>11</b> Height		
Boom Transport – No Tools*	2466 mm (97 in)	2540 mm (100 in)
Boom Working – With Tools**	2671 mm (105 in)	3080 mm (121 in)
<b>12</b> Cab Height	2541 mm (100 in)	2541 mm (100 in)
<b>13</b> Swing Bearing Height	756 mm (30 in)	756 mm (30 in)
<b>14</b> Overall Undercarriage Length	2880 mm (113 in)	2880 mm (113 in)
<b>15</b> Overall Shipping Length		
with Counterweight	5780 mm (228 in)	5800 mm (228 in)***
without Counterweight	5645 mm (222 in)	5665 mm (223 in)***
<b>16</b> Track Belt/Shoe Width	450 mm (18 in)	450 mm (18 in)
<b>17</b> Overall Track Width	2300 mm (91 in)	2300 mm (91 in)
<b>18</b> Ground Clearance	350 mm (14 in)	350 mm (14 in)
<b>19</b> Stick Length	1665 mm (66 in)	2208 mm (87 in)

\*Boom Height when stick is pinned in transport position with no attachments.

\*\*Boom Height when stick is pinned in working position with attachments. Standard Stick offers only one pin position.

\*\*\*With blade positioned at the rear of the machine.

## Air Conditioning System

The air conditioning system on this machine contains the fluorinated greenhouse gas refrigerant R134a (Global Warming Potential = 1430). The system contains 1.0 kg of refrigerant which has a CO<sub>2</sub> equivalent of 1.430 metric tonnes.

# 308 CR Mini Hydraulic Excavator

## Lift Capacities – Minimum Configuration

Lift Point Height			Lift Point Radius 3 m (9.8 ft)			Lift Point Radius 4.5 m (14.8 ft)			Lift Point Radius (Maximum)					
			Over Front			Over Side	Over Front			Over Side	Over Front		Over Side	m (ft)
			Blade Down	Blade Up	kg (lb)		Blade Down	Blade Up	kg (lb)		Blade Down	Blade Up		
4.5 m (14.8 ft)	Standard Stick	kg (lb)	*2345 (*5,171)	*2345 (*5,171)	*2345 (*5,171)				*1498 (*3,303)	*1498 (*3,303)	*1498 (*3,303)	4.27 (14.0)		
	Long Stick	kg (lb)	*1926 (*4,247)	*1926 (*4,247)	*1926 (*4,247)	*1874 (*4,132)	*1874 (*4,132)	1427 (3,147)	*1434 (*3,162)	*1434 (*3,162)	1219 (2,688)	4.89 (16.0)		
3 m (9.8 ft)	Standard Stick	kg (lb)	*2864 (*6,315)	*2864 (*6,315)	*2864 (*6,315)	*2217 (*4,888)	1588 (3,502)	1388 (3,061)	*1406 (*3,100)	*1406 (*3,100)	1139 (2,511)	5.06 (16.6)		
	Long Stick	kg (lb)	*2445 (*5,391)	*2445 (*5,391)	*2445 (*5,391)	*1985 (*4,377)	1588 (3,502)	1385 (3,054)	*1366 (*3,012)	1083 (2,388)	946 (2,086)	5.59 (18.3)		
1.5 m (4.9 ft)	Standard Stick	kg (lb)	*3627 (*7,998)	2856 (6,297)	2405 (5,303)	*2414 (*5,323)	1512 (3,334)	1315 (2,900)	*1467 (*3,235)	1163 (2,564)	1016 (2,240)	5.32 (17.5)		
	Long Stick	kg (lb)	*3308 (*7,294)	*3308 (*7,294)	2425 (5,347)	*2250 (*4,961)	1493 (3,292)	1294 (2,853)	*1419 (*3,129)	977 (2,154)	850 (1,874)	5.83 (19.1)		
0 m (0 ft)	Standard Stick	kg (lb)	*3767 (*8,306)	2704 (5,962)	2265 (4,994)	*2450 (*5,402)	1450 (3,197)	1256 (2,769)	*1691 (*3,729)	1193 (2,631)	1039 (2,291)	5.15 (16.9)		
	Long Stick	kg (lb)	*3719 (*8,200)	2661 (5,868)	2220 (4,895)	*2402 (*5,296)	1409 (3,107)	1214 (2,677)	*1602 (*3,532)	992 (2,187)	860 (1,896)	5.67 (18.6)		

Maximum Weight: steel tracks with pads, cab, operator, full fuel tank, counterweight, no bucket

## Lift Capacities – Maximum Configuration

Lift Point Height			Lift Point Radius 3 m (9.8 ft)			Lift Point Radius 4.5 m (14.8 ft)			Lift Point Radius (Maximum)					
			Over Front			Over Side	Over Front			Over Side	Over Front		Over Side	m (ft)
			Blade Down	Blade Up	kg (lb)		Blade Down	Blade Up	kg (lb)		Blade Down	Blade Up		
4.5 m (14.8 ft)	Standard Stick	kg (lb)	*2345 (*5,171)	*2345 (*5,171)	*2345 (*5,171)				*1498 (*3,303)	*1498 (*3,303)	*1498 (*3,303)	4.27 (14.0)		
	Long Stick	kg (lb)	*1926 (*4,247)	*1926 (*4,247)	*1926 (*4,247)	*1874 (*4,132)	*1874 (*4,132)	*1874 (*4,132)	*1434 (*3,162)	*1434 (*3,162)	*1434 (*3,162)	4.89 (16.0)		
3 m (9.8 ft)	Standard Stick	kg (lb)	*2864 (*6,315)	*2864 (*6,315)	*2864 (*6,315)	*2217 (*4,888)	1807 (3,984)	1581 (3,486)	*1406 (*3,100)	*1406 (*3,100)	*1406 (*3,100)	5.06 (16.6)		
	Long Stick	kg (lb)	*2445 (*5,391)	*2445 (*5,391)	*2445 (*5,391)	*1985 (*4,377)	*1985 (*4,377)	1579 (3,482)	*1366 (*3,012)	*1366 (*3,012)	1094 (2,412)	5.59 (18.3)		
1.5 m (4.9 ft)	Standard Stick	kg (lb)	*3627 (*7,998)	*3627 (*7,998)	2743 (6,048)	*2414 (*5,323)	1731 (3,817)	1509 (3,327)	*1467 (*3,235)	*1467 (*3,235)	1173 (2,586)	5.32 (17.5)		
	Long Stick	kg (lb)	*3308 (*7,294)	*3308 (*7,294)	2762 (6,090)	*2250 (*4,961)	1712 (3,775)	1488 (3,281)	*1419 (*3,129)	1134 (2,500)	991 (2,185)	5.83 (19.1)		
0 m (0 ft)	Standard Stick	kg (lb)	*3767 (*8,306)	3100 (6,836)	2603 (5,740)	*2450 (*5,402)	1669 (3,680)	1450 (3,197)	*1691 (*3,729)	1377 (3,036)	1203 (2,653)	5.15 (16.9)		
	Long Stick	kg (lb)	*3719 (*8,200)	3057 (6,741)	2558 (5,640)	*2402 (*5,296)	1628 (3,590)	1407 (3,102)	*1602 (*3,532)	1154 (2,545)	1005 (2,216)	5.67 (18.6)		

Maximum Weight includes steel tracks with pads, cab, operator, full fuel tank, counterweight and no bucket.

\*The above loads are in compliance with hydraulic excavator lift capacity rating standard ISO 10567:2007 and they do not exceed 87% of hydraulic lifting capacity or 75% of tipping capacity. The excavator bucket weight is not included on this chart.



# 308 CR Mini Hydraulic Excavator

## Standard and Optional Equipment

Standard and optional equipment may vary. Consult your Cat dealer for details.

	Standard	Optional		Standard	Optional
<b>ENGINE</b>			<b>OPERATOR ENVIRONMENT (CONTINUED)</b>		
Cat C3.3 Diesel Engine (U.S. EPA Tier 4 Final/EU Stage V) – Electronic Engine, Turbo, Diesel Particulate Filter (DPF)	✓		Next Generation Advanced Monitor		✓
Automatic Engine Idle	✓		<i>(below are all included with Next Generation Advanced Monitor option)</i>		
Automatic Engine Shutdown	✓		– Touch Screen		
Automatic Swing Brake	✓		– Site Reference System		
Automatic Two Speed Travel	✓		– High Definition Camera Capable (IP68 & IP69K)		
Fuel Water Separator with Indicator	✓		– Numeric Security Code		
Radial Seal – Double Element Air Filter	✓		<b>UNDERCARRIAGE</b>		
Extended Life Coolant, –37° C (–37° F)	✓		Greased and Lubricated Track	✓	
Ecology Drain	✓		Tie Down Eyes on Track Frame	✓	
<b>HYDRAULICS</b>			Dozer Blade	✓	
Smart Tech Electronic Pump	✓		Wide Dozer Blade		✓
Electronic Variable Displacement Piston Pump	✓		Dozer Float	✓	
Load Sensing/Flow Sharing Hydraulics	✓		Bolt-on, Reversible Wear Edge	✓	
Power On Demand	✓		Steel Tracks (450 mm/17.7 in wide)		✓
Hydraulic Temperature Monitoring	✓		Wide Steel Tracks (600 mm/23.6 in)		✓
Certified Accumulator	✓		Steel Track with Rubber Pads		✓
HYDO™ Advanced Hydraulic Oil	✓		Track Guides		✓
<b>OPERATOR ENVIRONMENT</b>			<b>BOOM, STICK AND LINKAGES</b>		
Top Guard ISO 10262 1998 Level I	✓		One Piece Boom (3700 mm/145.7 in)	✓	
ROPS ISO 12117-2:2008	✓		Standard Stick (1665 mm/65.6 in)	✓	
Stick Steer Mode	✓		Long Stick (2208 mm/92.9 in)		✓
Travel Cruise Control	✓		Front Shovel Capable – Pin-on/Manual Coupler/Hydraulic Coupler (not available in all regions)	✓	
Control Pattern Changer	✓		Attachments including Buckets, Augers and Hammers		✓
Adjustable Wrist Rests	✓		2nd Auxiliary Hydraulic Lines		✓
Molded Footrests	✓		Boom Lowering Check Valve	✓	
Removable, Washable Floor Mat	✓		Stick Lowering Check Valve	✓	
Travel Pedals and Hand Levers	✓		Bucket Linkage with Lift Eye		✓
Cat Key with Passcode Option	✓		<b>ELECTRICAL</b>		
Push to Start with Bluetooth® Key		✓	12 Volt Electrical System	✓	
HVAC with Automatic Temperature Control	✓		60 Ampere Alternator	✓	
Hydraulic Lockout Controls	✓		Circuit Breaker	✓	
Integrated Lower Front Window	✓		850 CCA Maintenance Free Battery	✓	
Assisted Front Window Overhead Storage	✓		Battery Disconnect	✓	
Rear Window Emergency Exit	✓		Ignition Key Stop Switch	✓	
Fabric, High Back, Suspension Seat	✓		Product Link Elite (regulations apply)		✓
Air Suspension Heated Seat		✓	Travel Alarm		✓
Retractable Seat Belt (75 mm/3 in)	✓		Rearview Camera		✓
Coat Hook	✓		Rotating Beacon		✓
Cup Holder	✓		<b>GUARDING</b>		
LED Interior Light	✓		Mesh Front Guard ISO 10262 1998 Level I		✓
Literature Holder	✓		Heavy Duty Front Guard ISO 10262 1998 Level II		✓
Mounting Bosses for Top and Front Guards	✓		Overhead Cab Guard ISO 10262 1998 Level II		✓
12V Power Socket	✓		Polycarbonate Front Window EN356 P5A		✓
Radio – Bluetooth, Auxiliary, Microphone, USB (charging only)	✓		Track Guards		✓
Skylight	✓		<b>OTHER</b>		
Signaling/Warning Horn	✓		Additional Counterweight		✓
Cab and (left side) Boom Work Lights	✓		Locks on External Enclosure Doors	✓	
Utility Space for Mobile Phone	✓		Lockable Fuel Cap	✓	
Rain Visor		✓	Beacon Socket	✓	
Next Generation Color LCD Monitor (IP66)	✓		Rear Reflectors	✓	
– Jog Dial Interface	✓		Water Jacket Heater		✓
– Fuel Level and Coolant Temperature Gauges	✓		Refueling Pump	✓	
– Maintenance and Machine Monitoring	✓				
– Performance and Machine Adjustments	✓				
– Numeric Security Code	✓				
– Multiple Languages	✓				
– Camera Ready (IP68 & IP69K)	✓				
– Hour Meter with Wake Up Switch	✓				

For more complete information on Cat products, dealer services, and industry solutions, visit us on the web at [www.cat.com](http://www.cat.com)

© 2021 Caterpillar  
All rights reserved

Materials and specifications are subject to change without notice. Featured machines in photos may include additional equipment. See your Cat dealer for available options.

CAT, CATERPILLAR, LET'S DO THE WORK, their respective logos, "Caterpillar Corporate Yellow," the "Power Edge" and Cat "Modern Hex" trade dress as well as corporate and product identity used herein, are trademarks of Caterpillar and may not be used without permission.

AEHQ8353 (03-2021)  
Build Number: 07A  
(Europe)

