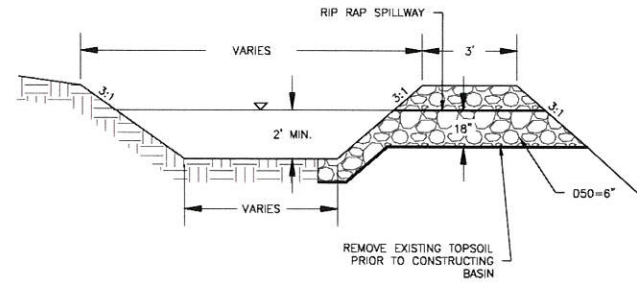
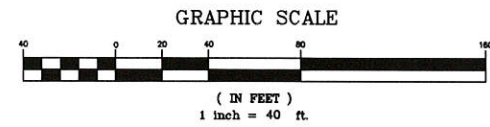
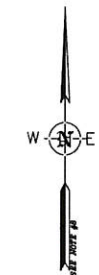
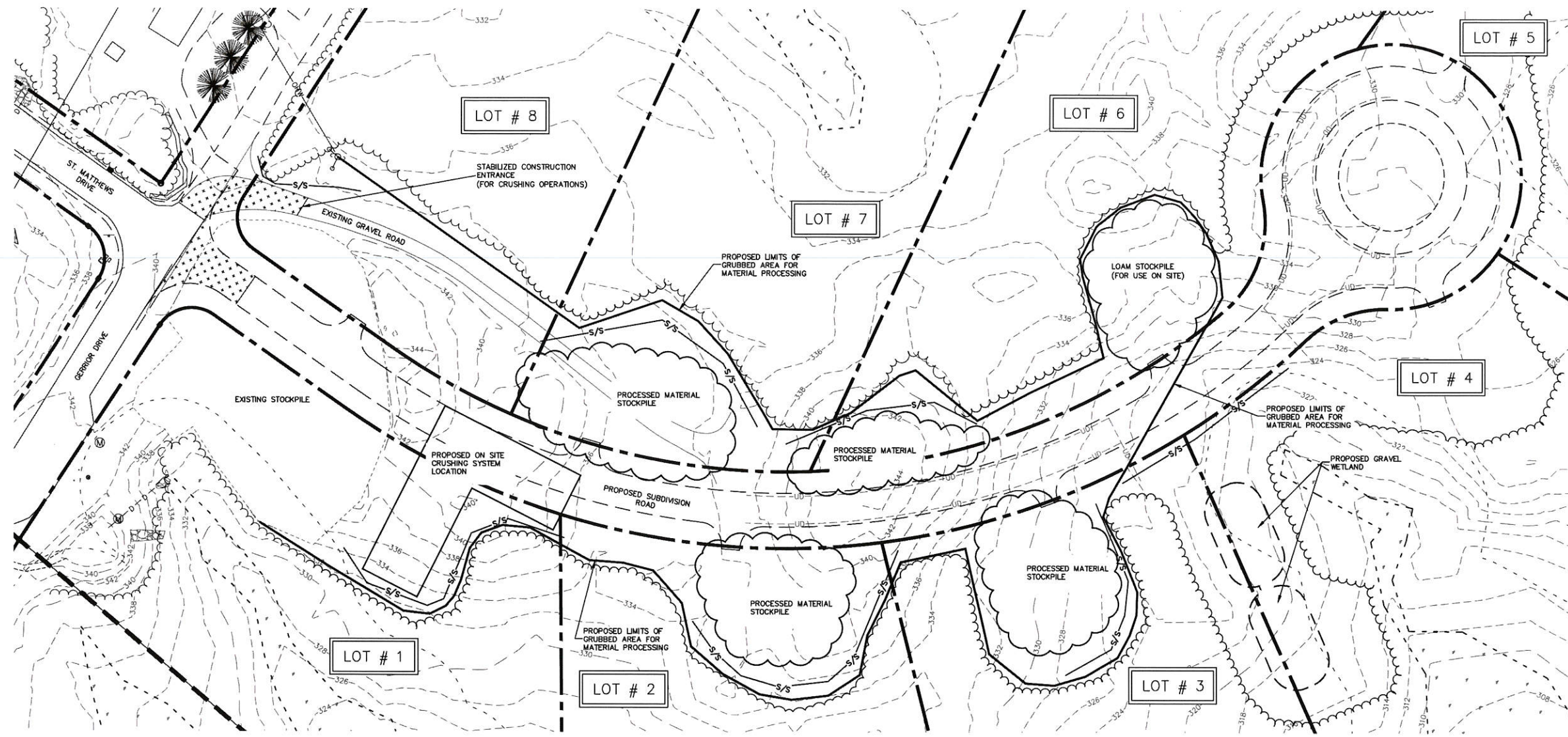


Drawing Name: P:\11-060\11-060.dwg
Date: 20 Jan 2015 - 3:02pm



TEMPORARY SEDIMENT BASIN CROSS SECTION DETAIL
N.T.S.

- CONSTRUCTION SEQUENCING NOTES FOR CRUSHING OPERATION**
1. THE EXISTING MATERIAL STOCKPILE ON THE EAST SIDE OF THE INTERSECTION OF GERRARD DRIVE AND ST. MATTHEWS DRIVE WILL BE PROCESSED ON-SITE AND USED FOR CONSTRUCTION OF THE PROPOSED ROADS AND DRIVEWAYS. THE ESTIMATED QUANTITY OF STOCKPILED MATERIAL IS 10,000 CUBIC YARDS.
 2. EROSION CONTROL MEASURES SHALL BE INSTALLED AS SHOWN ON THIS PLAN.
 3. INSTALL STABILIZED CONSTRUCTION ENTRANCE PRIOR TO MATERIAL PROCESSING AS SHOWN ON SHEET D3 OF THE SUBDIVISION PLANS.
 4. CLEAR AND GRUB THE AREAS SHOWN ON THIS PLAN TO BE USED FOR PROCESSING AND STOCKPILED PROCESSED MATERIAL.
 5. PRIOR TO BEGINNING THE CONSTRUCTION OPERATION ALL PERMITS SHALL BE IN PLACE AND THE CRUSHING CONTRACTOR SHALL NOTIFY THE PROPER AUTHORITIES INCLUDING BUT NOT LIMITED TO NHDES AIR QUALITY, BARRINGTON TOWN CLERK, AND THE NH LABOR BOARD MINING DIVISION.
 6. THE ESTIMATED TIMEFRAME TO COMPLETE THE CRUSHING OPERATION IS 3-6 WEEKS. THE HOURS OF OPERATION FOR CRUSHING WILL BE MONDAY-FRIDAY 8:00AM TO 4:00PM.
 7. DUST SHALL BE PROPERLY CONTROLLED THROUGHOUT THE CONSTRUCTION PROCESS.
 8. CONSTRUCTION OF ALL ROADWAYS, DRIVEWAYS, AND UTILITIES FOR THE PROPOSED SUBDIVISION SHALL FOLLOW THE CONSTRUCTION SEQUENCING NOTES ON SHEET D1.
 9. THE EXCESS MATERIAL FROM THE CRUSHING OPERATION SHALL BE REMOVED FROM THE SITE PRIOR TO ISSUANCE OF A OCCUPANCY PERMIT FOR LOTS 1-8.
 10. TEMPORARY SEDIMENT BASINS SHALL BE CONSTRUCTED AS NECESSARY TO COLLECT RUNOFF FROM THE PROCESSING AREA.
 11. THE CRUSHING EQUIPMENT IS MOBILE AND IS SHOWN FOR REPRESENTATION. THE EQUIPMENT MAY BE MOVED TO OTHER LOCATIONS DURING PROCESSING BUT WILL BE WITHIN THE DEFINED AREA FOR MATERIAL PROCESSING.

DATE: 12/8/14		SCALE: 1"=40'		DESIGNED BY: MJS		DRAWN BY: KD		APPROVED BY: MJS		DWG FILE: 11-060 CIT.dwg	
MATERIAL PROCESSING SITE PLAN prepared for GERRARD LANE TRUST THE HOMESTEAD SUBDIVISION PHASE II GERRARD DRIVE BARRINGTON, NH											
ENGINEERING, P.C. CIVIL • STRUCTURAL • ENVIRONMENTAL 5 Railroad St., P.O. Box 359 Newmarket, NH 03857 Phone: (603) 859-4079 Fax: (603) 859-4627 E-mail: info@engr.com											
LAND USE OFFICE JOB: 11-060											
MPP											
RECEIVED JAN 20 2015											