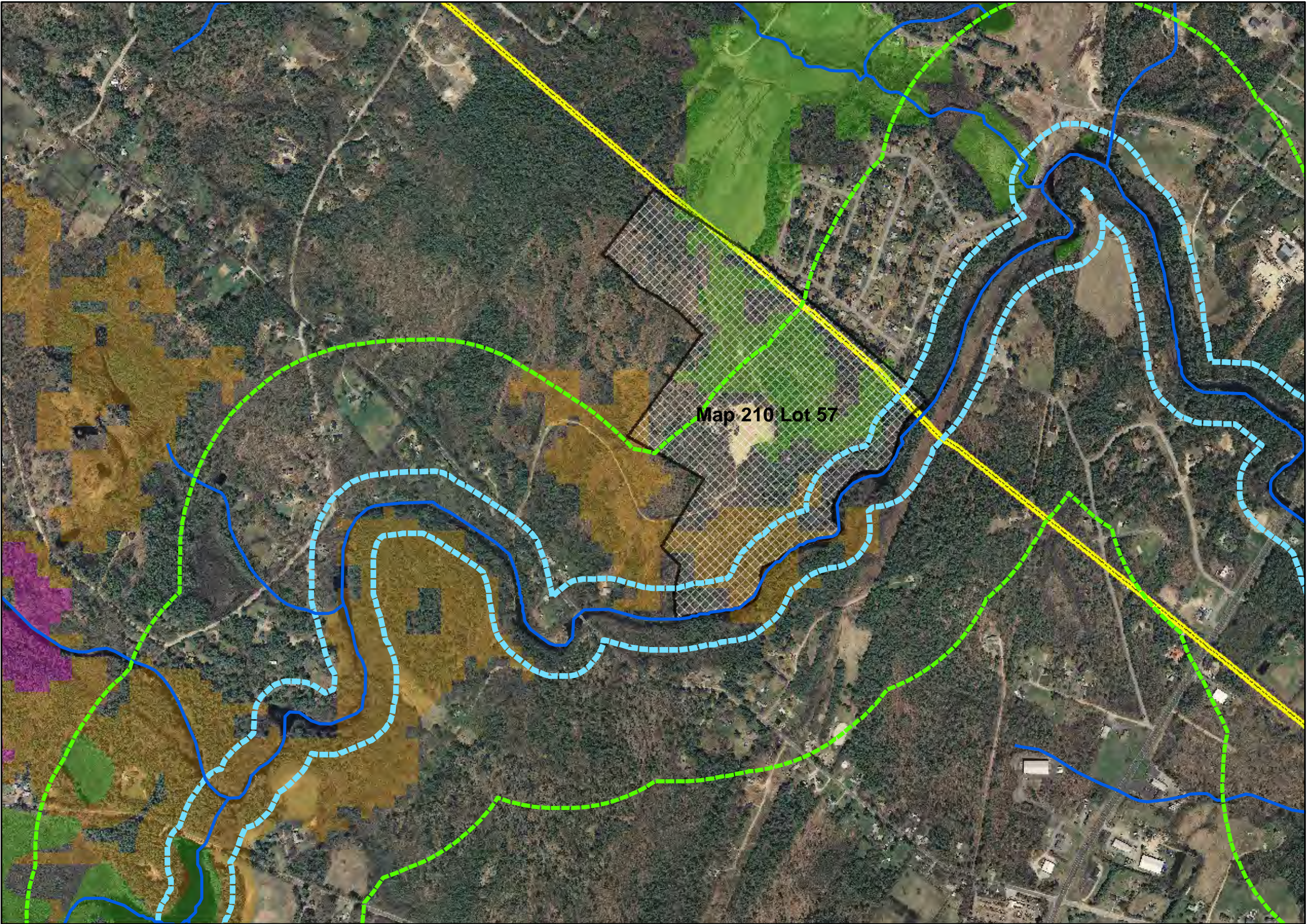


Wildlife Protection Areas

Legend

-  Designated River Buffer
-  Subject Lot
-  Isinglass River
-  Shoreland Protection Act Buffer
- Wildlife Action Protection Areas**
 -  Highest Ranked Habitat in NH
 -  Highest Ranked Habitat in Biological Region
 -  Supporting Landscapes
 -  Municipal Boundary



Prepared by *Strafford Regional Planning Commission*
150 Wakefield Street, Suite 12, Rochester, NH 03867
T: (603) 994-3500 EM: srpc@strafford.org
Regional Impact Committee
Date/Author: December/GJ
Path: M:\Region\Regional Impact Committee\Regional_Impact\2012\
Trinity Conservation-Gravel Excavation Operation\GIS-MAPS
Maps prepared by Strafford Regional Planning Commission
are for planning purposes only.

Data Sources

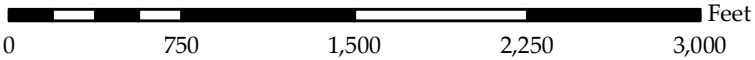
Base features are from USGS 1:24,000 scale Digital Line Graphs, as archived in the GRANIT database. Digital data in NH GRANIT represent the efforts of the contributing agencies to record information from the cited source materials. Complex Systems Research Center (CSRC), under contract to the Office of Energy & Planning (OEP), and in consultation with cooperating agencies, maintains a continuing program to identify and correct errors in these data. Neither OEP nor CSRC make any claim as to the validity or reliability or to any implied uses of these data.

Transportation Project data were digitized by SRPC GIS staff, Dec. 2010.

Digital tax parcels taken from SRPC database. **Data should be used for planning purposes only.** Data was derived from various sources and were updated at different time frames, with varying levels of accuracy.

2010 High Resolution Orthophotography Provided by NHDOT. Imagery was flown in the spring of 2010 by Sanborn Inc.

Additional data was derived from various sources. For more information please contact the Strafford Regional Planning Commission.



Grid North
NH State Plane Coordinates
NAD 1983 (feet)

